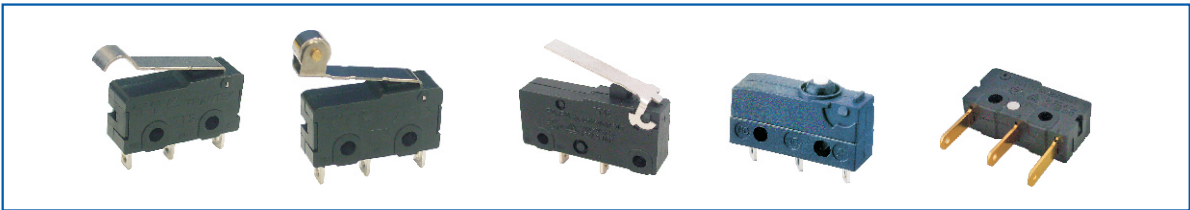


153 Series Micro Switch



Features 特點

1. Reliable, small size and light weight;
2. Long life and more operating forces can be applied such as lightly force;
3. Good feeling and more levers are applied.

可靠型，體積小，重量輕，壽命長，有多種操作力可選用，如極輕之操作力；觸感極佳，開關柄有多種選擇。

Applications 用途

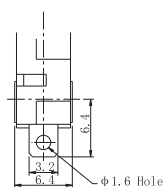
Telephone, air conditioner, computer, humidifier, alarm, time recorder, solder gun, fax machine, joystick, water pump, toy car, light, etc.

適用於電話，空調，計算機，增濕器，報警器，定時器，焊槍，傳真機，遊戲控制杆，水泵，玩具車，燈具等等。

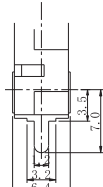
Specifications 規格說明

Rating 額定負荷	3A 125V/250VAC (5A 6A 10.1A)	Mechanical Life 機械壽命	1,000,000 cycles
Contact Resistance 接觸電阻	500mΩ Max.	Electrical Life 電氣壽命	10,000 cycles
Insulation Resistance 絕緣電阻	>100MΩ DC500V	Ambient Temper. Used 適用溫度	-25°C to 85°C
Withstand Voltage 耐電壓	AC1000V 1min.	Ambient Humidity Used 適用濕度	<85% RH
Soldering Temper. 焊接溫度	260 ± 5°C 3s	Operating Force 操作力	See Table

Terminal Types 端子型式:

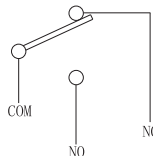


Solder Terminal (N)

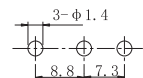


P.C.B. Terminal (P)

SCHEMATIC



Mounting hole for P.C.B. Terminal



Coding Rule 編號規則

153 □ □ □ □ □ □ □ □ □ □
I II III IV V VI VII VIII IX

I : Product series: three-digit

I : 產品系列代號 3位

153: TTS series

數字表示: “153” 表示 “TTS”

II: Load specification: double-digit,
in accordance with IEC61058S

II: 負載類型: 按IEC61058區分 2位

代号 Code	负载规格 Load specification	代号 Code	负载规格 Load specification
00	0.1A 125/250VAC	05	5A/6A 125/250VAC
01	1A 125/250VAC		
03	3A 125/250VAC	10	10(2)A 125/250VAC

III: Used temperature range: single-digit
0: below 55°C 1: -25°C to 85°C 2: -25°C to 130°C

III: 使用溫度範圍 1位

IV: Loop: single-digit
1: single-pole double-throw
2: single-pole single-throw, normally close
3: single-pole single-throw, normally open

0: T55
1: 25T85
2: 25T125

IV: 開關回路及位數 1位

V: Terminal type: single-digit
1: soldering terminal
2: PCB type terminal, left-toward
3: PCB type terminal, right-toward
4: 110 type inserting terminal
5: PCB type terminal, vertical

1: SPDT
2: SPST-NC 3: SPST-NO

V: 端子類型 1位

VI: Type of handle: double-digit
00: without handle 01: #1 handle 02: #2 handle

1: 焊綫端子
2: 左PCB端子
3: 右PCB端子
4: 110 快接端子
5: 直PCB端子

VI: 手柄類型 2位

VII: Type of handle assembly
0: without handle 1: external located
2: internal located

00: 無手柄 01: 01#手柄 02: 02#手柄

VII: 手柄安裝類型 1位

VIII: Operating force
(at the condition of no handle), double-digit

0: 不裝手柄 1: 外裝手柄 2: 內裝手柄

VIII: 操作力(按無柄時操作力區分) 2位

代号 Code	负载规格 Operation force	代号 Code	负载规格 Operation force
00	30	10	
01	50	11	
02	80	12	
03	120	13	
04	150	14	
05	180		
06	200		
07	210		
08	250		
09	300		

IX: Derivative code: double-digit
Including the below, but not limited.
1: Same terminal type and unconventional structure
2: difference of operation position
3: Color of button and housing
4: Difference of electroplating type
5: difference of contact

IX: 衍生序列號 2位
包括但不限于以下內容納入衍生序列號:

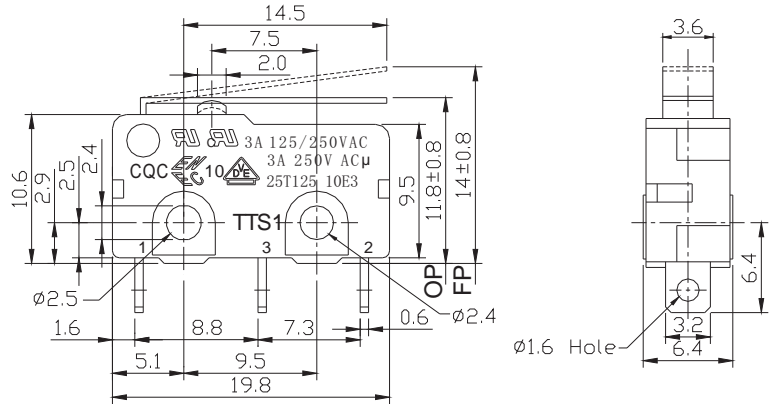
1: 同類的端子形狀、折彎方向或其他非常規結構;
2: OP段要求不同;
3: 按鈕顏色/膠殼顏色;
4: 電鍍不同;
5: 觸點不同;

X: Package type: single-digit
0 = plastic bag
1 = shrunk plastic package
2 = belting package 3 = tube package
4 = foam 5 = undetermined

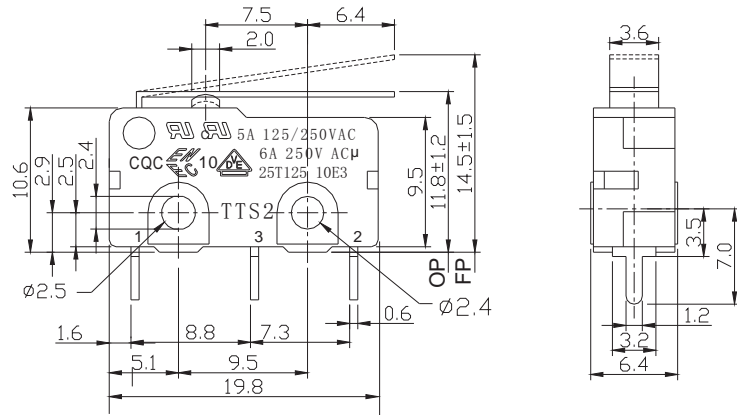
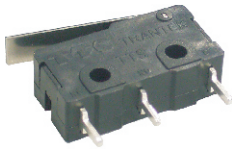
X: 包裝方式 1位

0 = 膠袋包裝 1 = 吸塑盒裝
2 = 編帶包裝 3 = 管裝
4 = 泡棉 5 = 待定

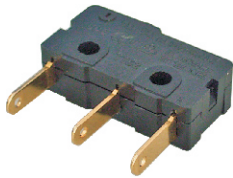
1530321101204000



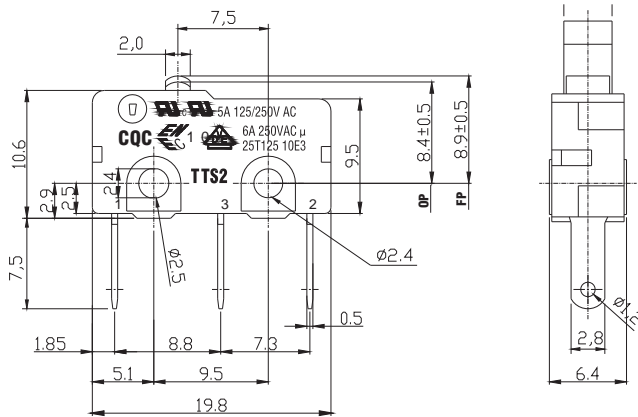
1530521502204000



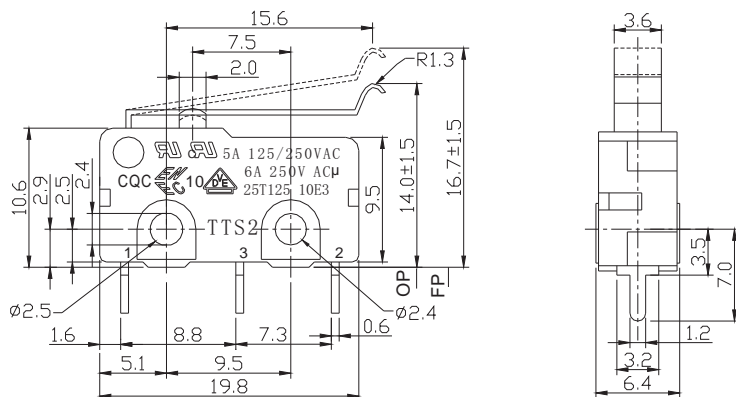
1530521400005100



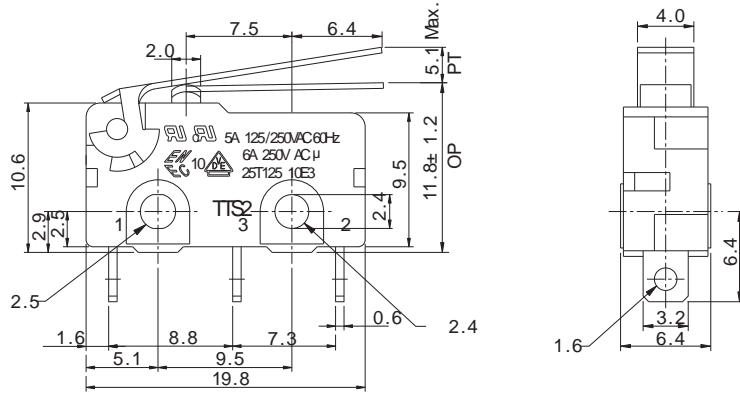
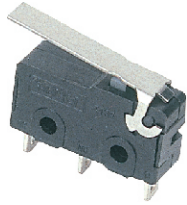
Gold plated terminal
镀金端子



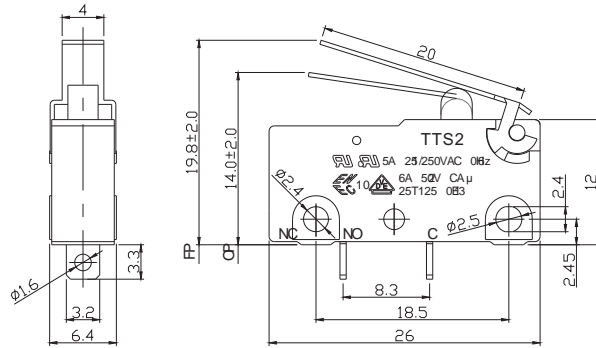
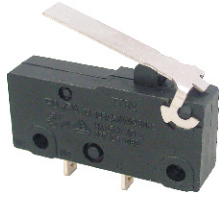
1530521504205000



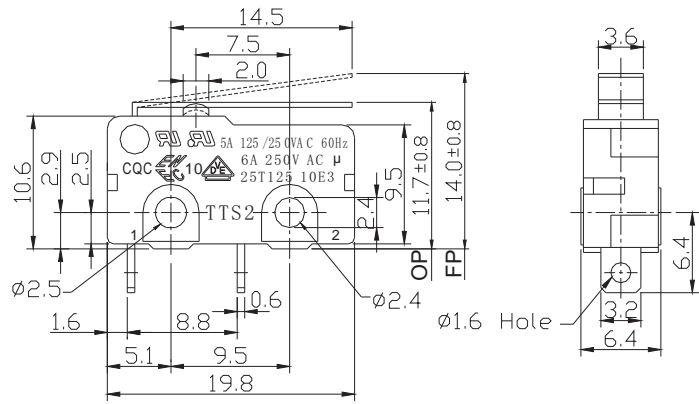
1530521102106000



1530523120110010



1530523101206000



1530522101206000

