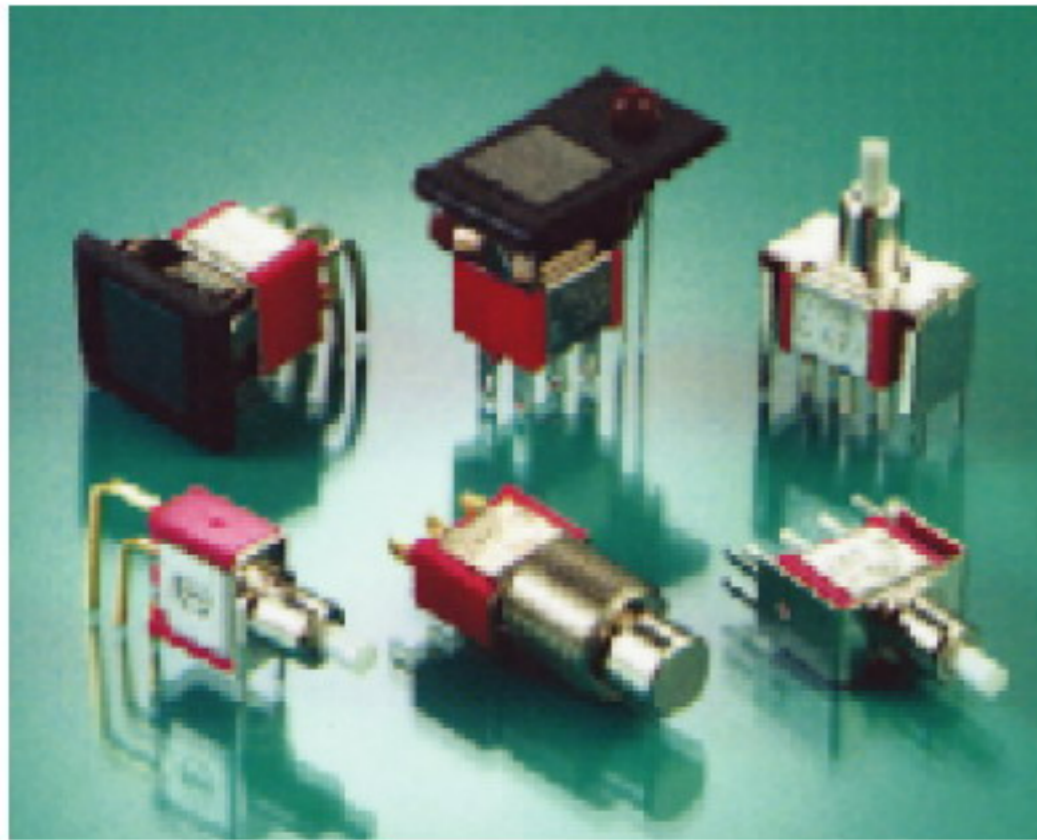


Push Button Switch 7M Series(On-Mom)



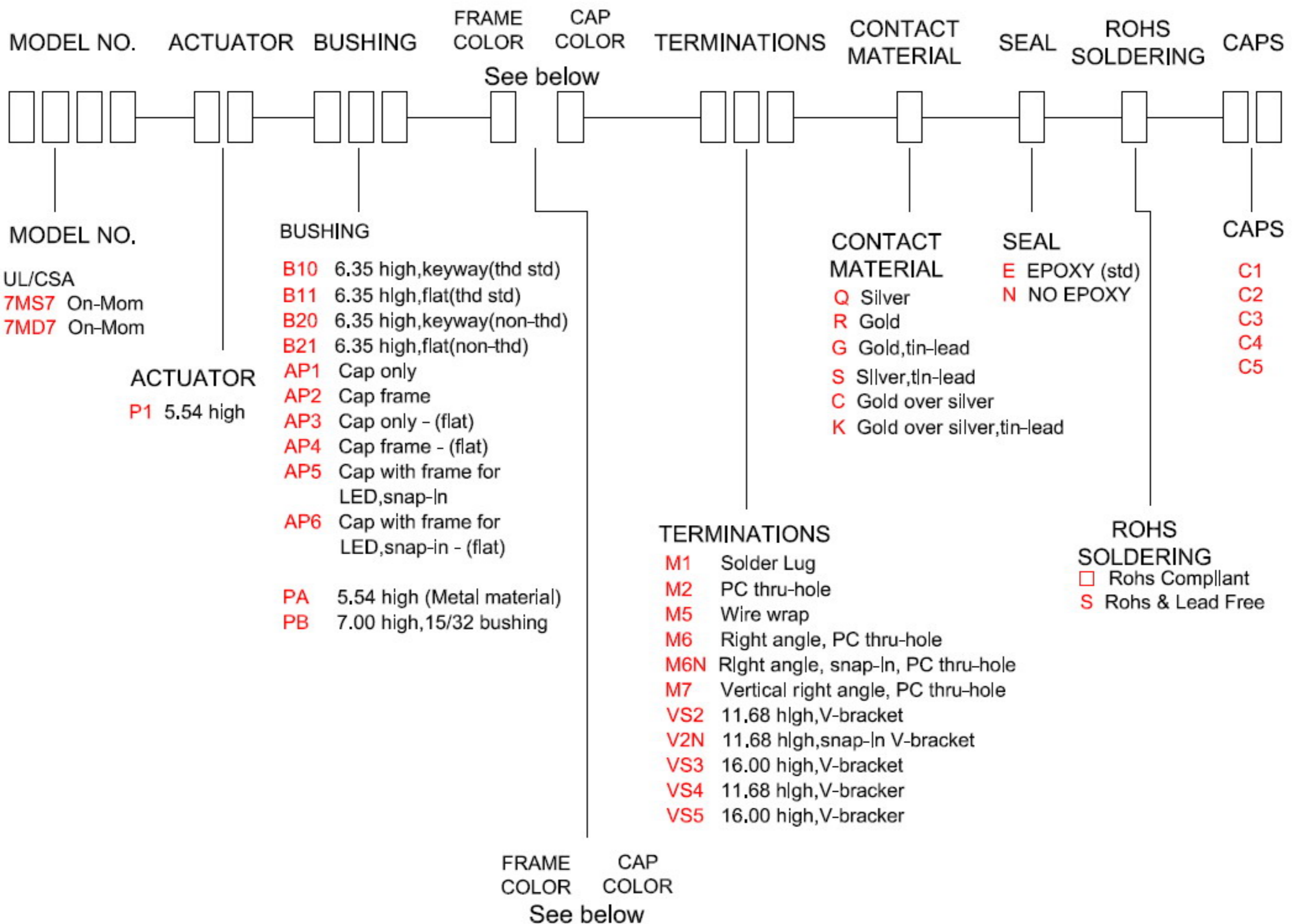
SPECIFICATIONS

- CONTACT RATING:** Dependent upon contact material
- MECHANICAL LIFE:** 50,000 make-and-break cycles at full load.
- CONTACT RESISTANCE:** 20mΩ max. Initial @ 2-4VDC
100mA for both silver and gold plated contacts.
- INSULATION RESISTANCE:** 1,000MΩ min.
- DIELECTRIC STRENGTH:** 1,000 V RMS@seal level.
- OPERATING TEMPERATURE:** -30° C to 85° C.

MATERIALS

- CASE -** Diallyl phthalate (DAP)(UL94V-0).
- PLUNGER -** Glass filled Nylon or Glass filled polyester.
- BUSHING -** Brass,nickel plated.
- HOUSING -** Stainless Steel.
- CONTACT -** Silver or gold plated.

HOW TO ORDER




ITEM NO	COLOR	PANTONE
1	White	
2	Black (Std)	Black C
3	Red	1797C
4	Orange	Warm Red C
5	Yellow	115C
6	Green	336C
7	Blue	2787C
8	Brown	490C
9	Gray	Cool Gray C

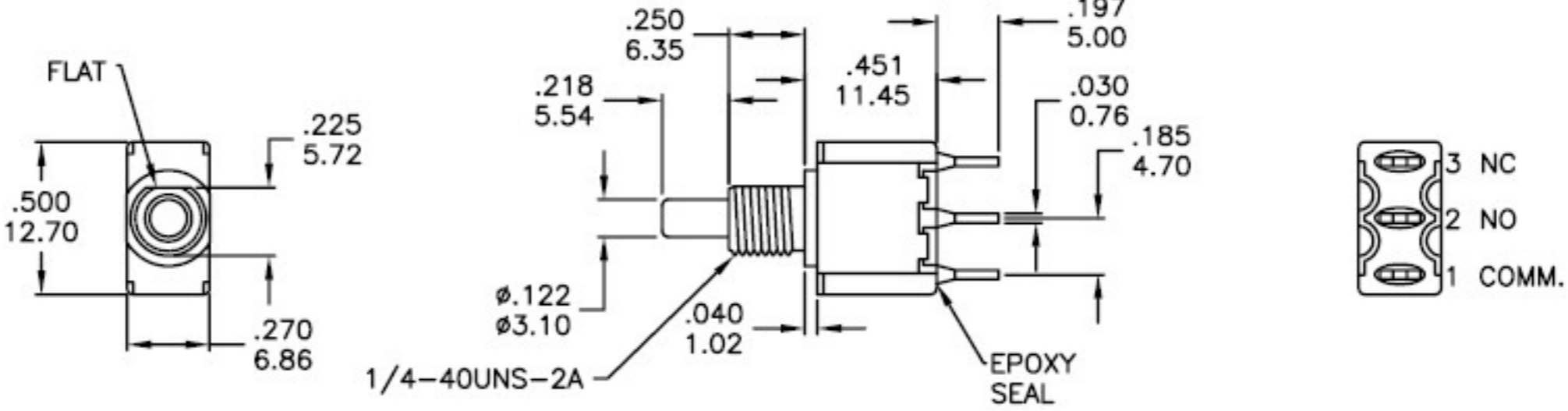
SWITCH FUNCTION

NO. POLES	UL/CSA MODEL NO.	MODEL NO.	SWITCH FUNCTION		CONNECTED TERMINALS		
			POS.1	POS.2	POS.1	POS.2	SCHEMATIC
SP	Q2717	7MS7	ON	MOM	1-3	1-2	
DP	Q2727	7MD7	ON	MOM	1-3,4-6	1-2,4-5	

MOM=MOMENTARY


POLE OPTIONS

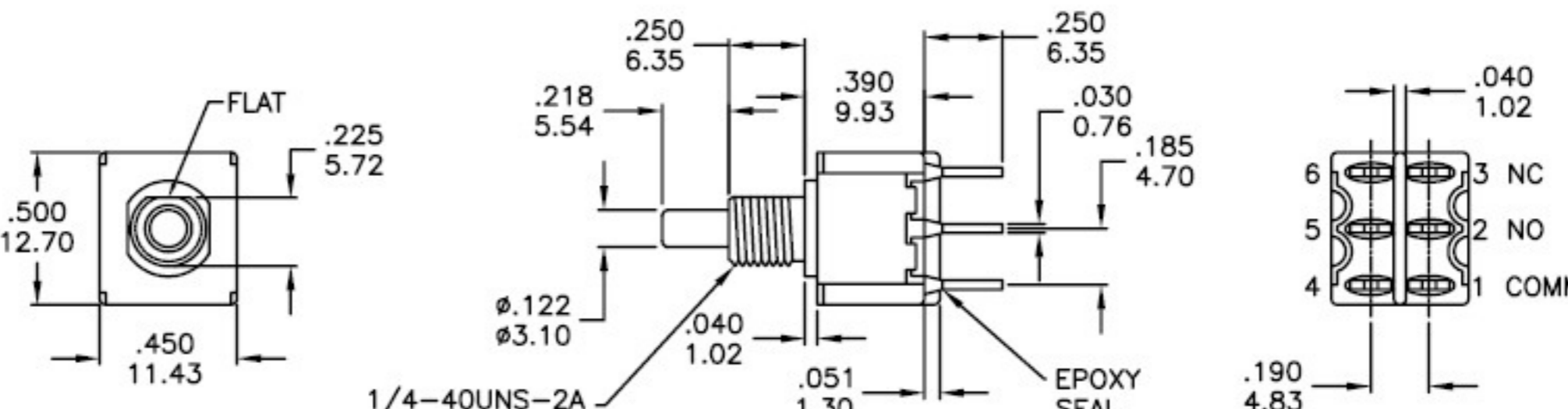




Part No. Shown : 7MS7P1B11M1QE

SPDT



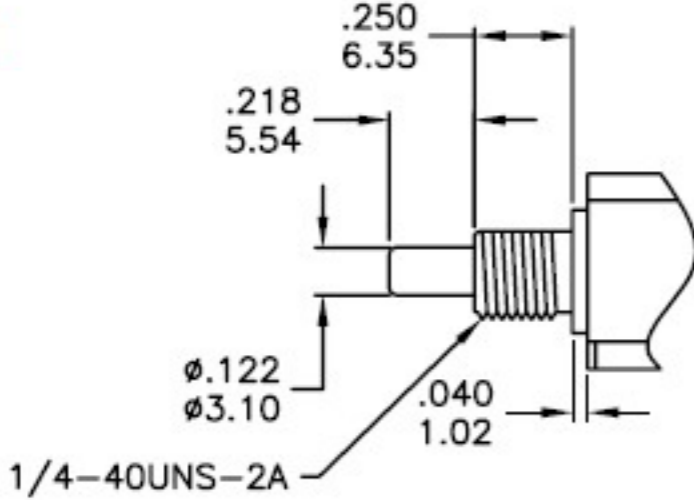


Part No. Shown : 7MD7P1B11M2QE

DPDT

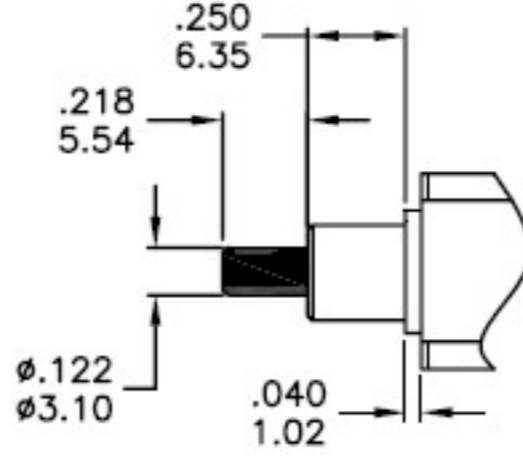
ACTUATOR

P1



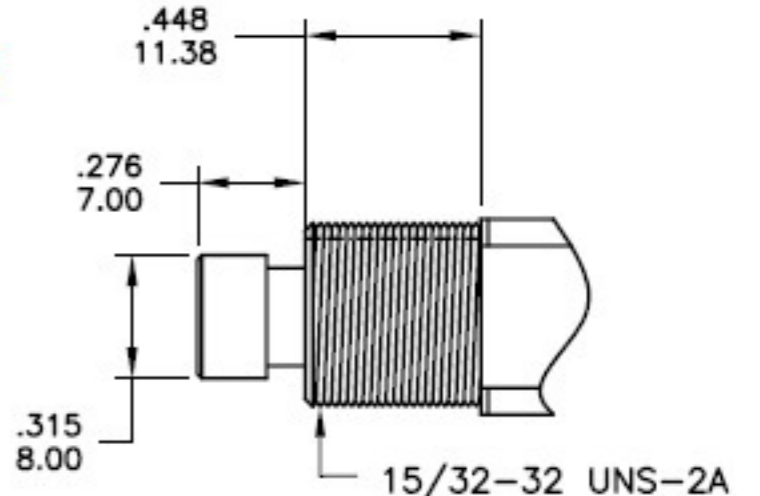
1/4-40UNS-2A

PA



handle, metal material

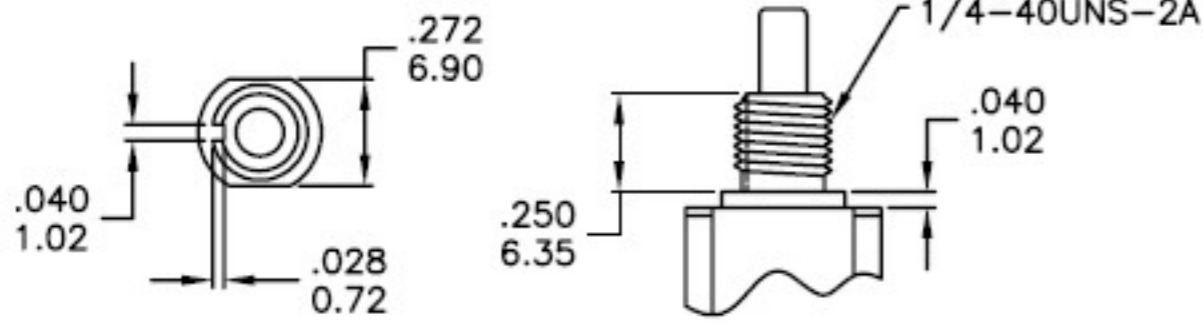
PBB13



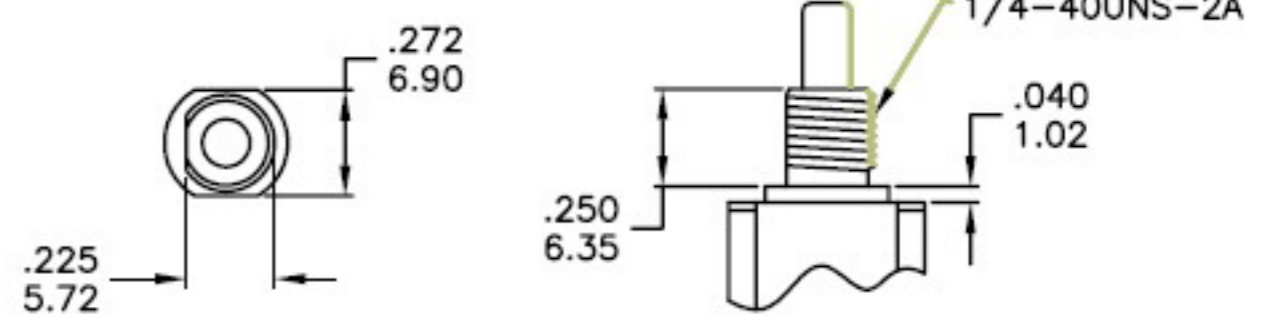
handle, metal material

BUSHING OPTIONS

**B10 THD STD
B20 NON-THD**

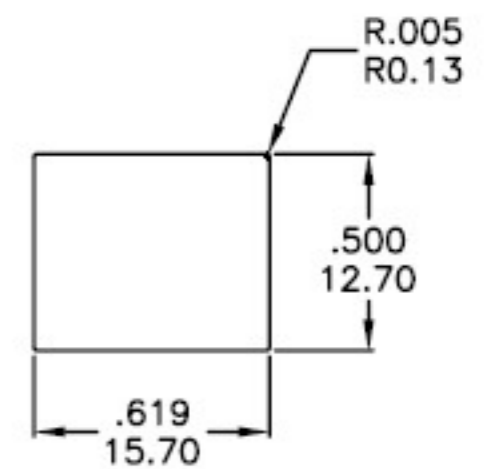
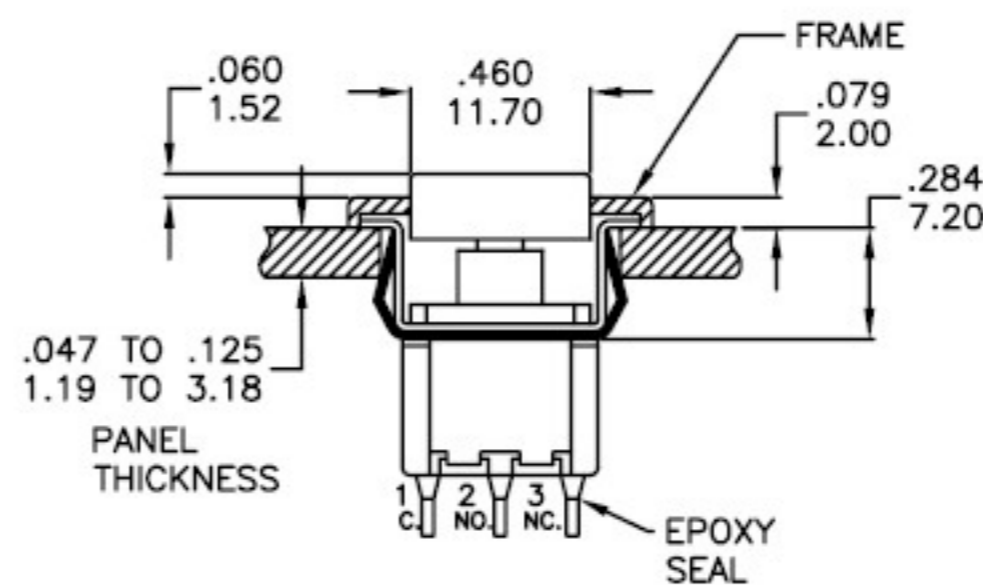
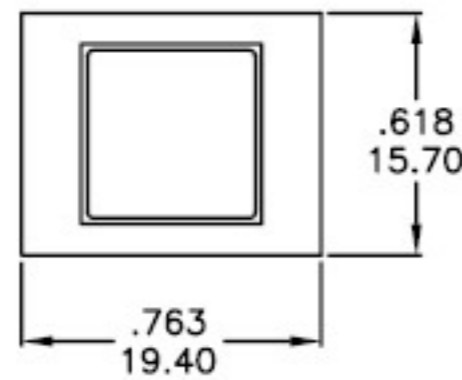


**B11 THD STD
B21 NON-THD**



PANEL MOUNT

AP2 CAP & FRAME / AP1 CAP ONLY



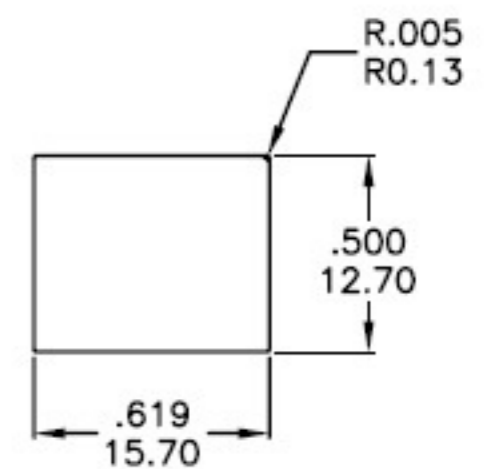
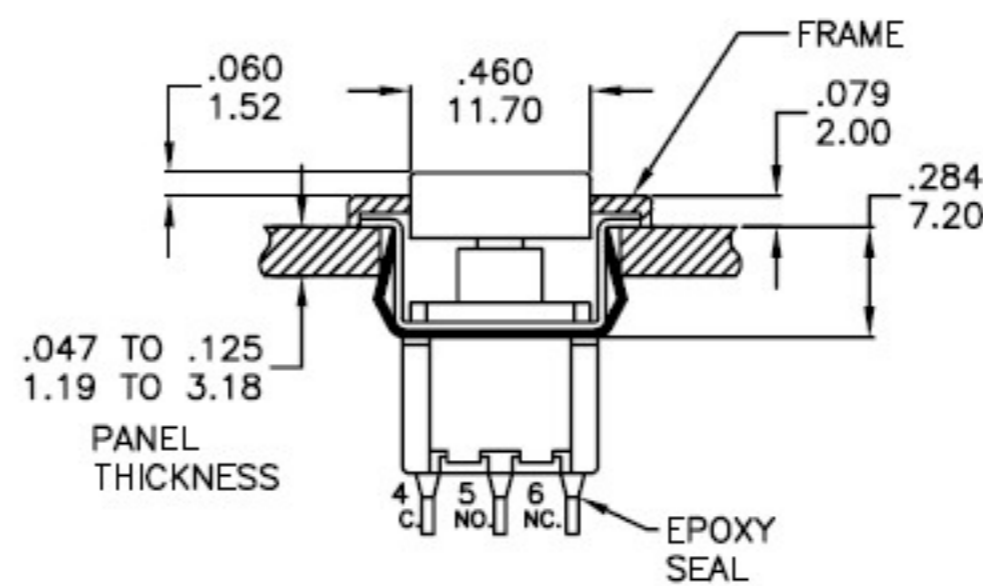
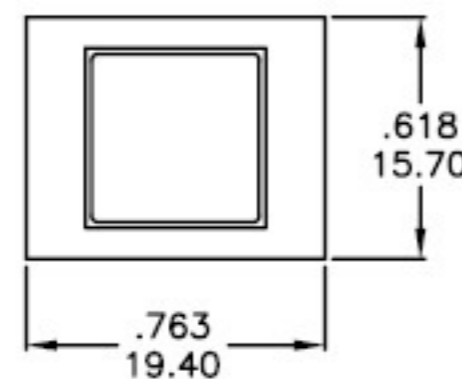
INCREASE TO .620/.625 15.75/15.88 FOR .091/.125 2.31/3.18 THK PANEL

PANEL LAYOUT

SPDT

Part No. Shown : 7MS7AP223M1QE

AP2 CAP & FRAME / AP1 CAP ONLY



INCREASE TO .620/.625 15.75/15.88 FOR .091/.125 2.31/3.18 THK PANEL

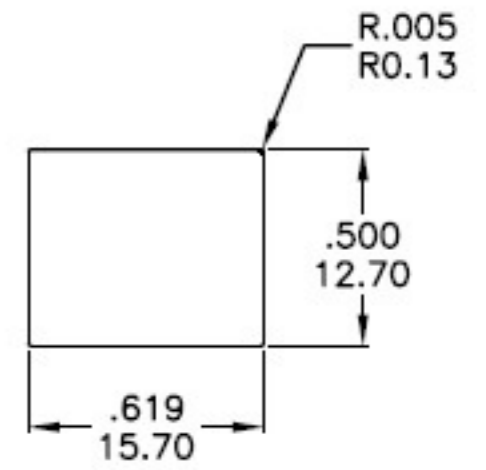
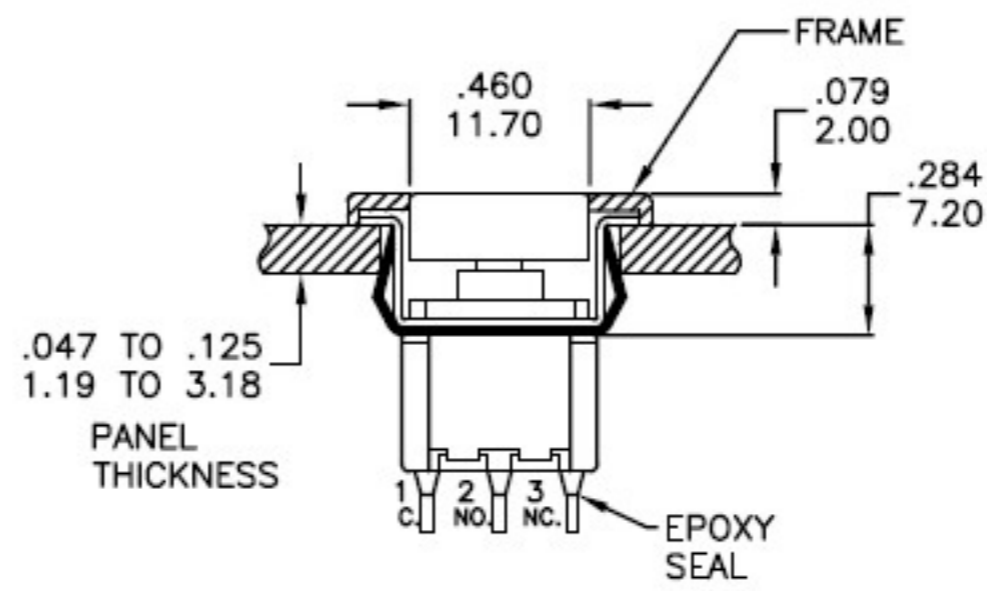
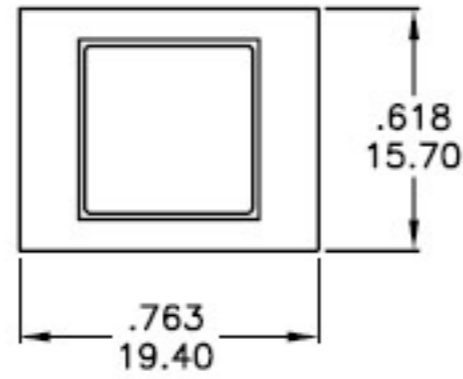
PANEL LAYOUT

DPDT

Part No. Shown : 7MD7AP223M1QE

PANEL MOUNT

AP4 CAP & FRAME / AP3 CAP ONLY



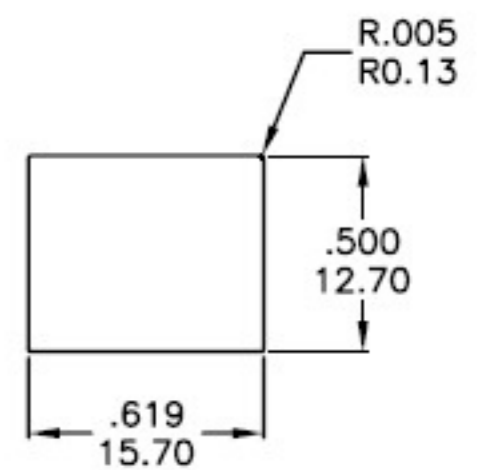
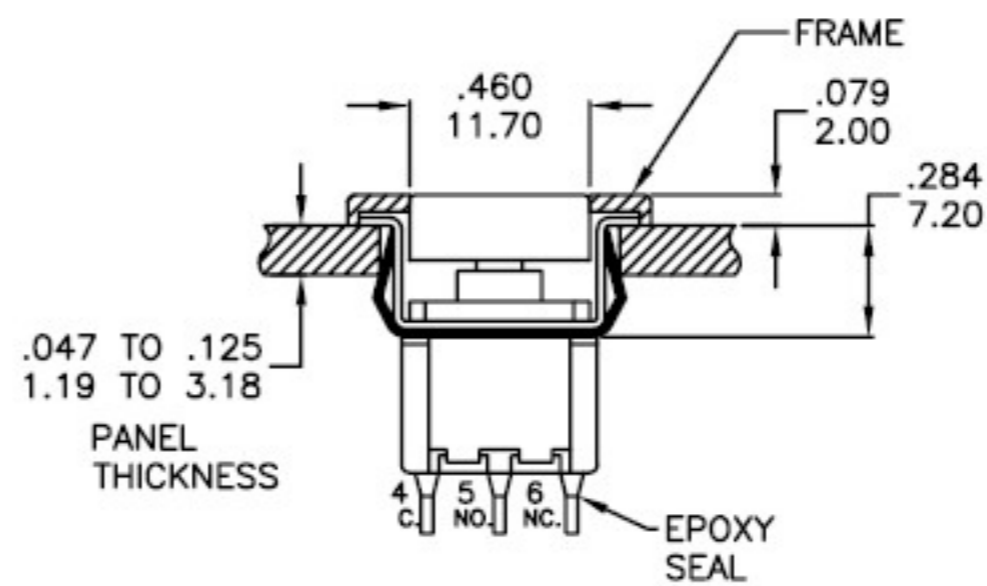
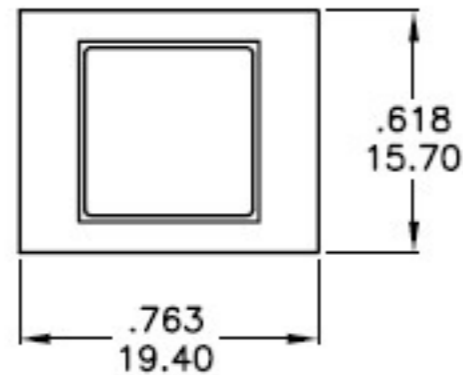
INCREASE TO .620/.625 15.75/15.88 FOR .091/.125 2.31/3.18 THK PANEL

PANEL LAYOUT

SPDT

Part No. Shown : 7MS7AP423M1RE

AP4 CAP & FRAME / AP3 CAP ONLY



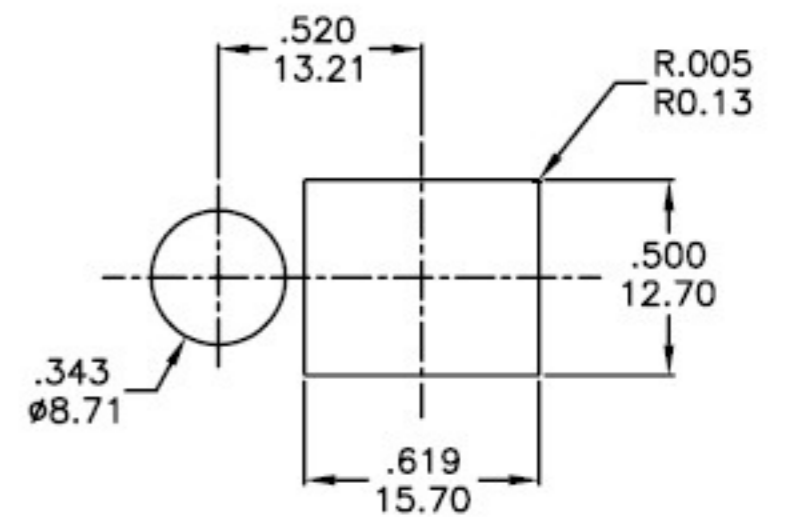
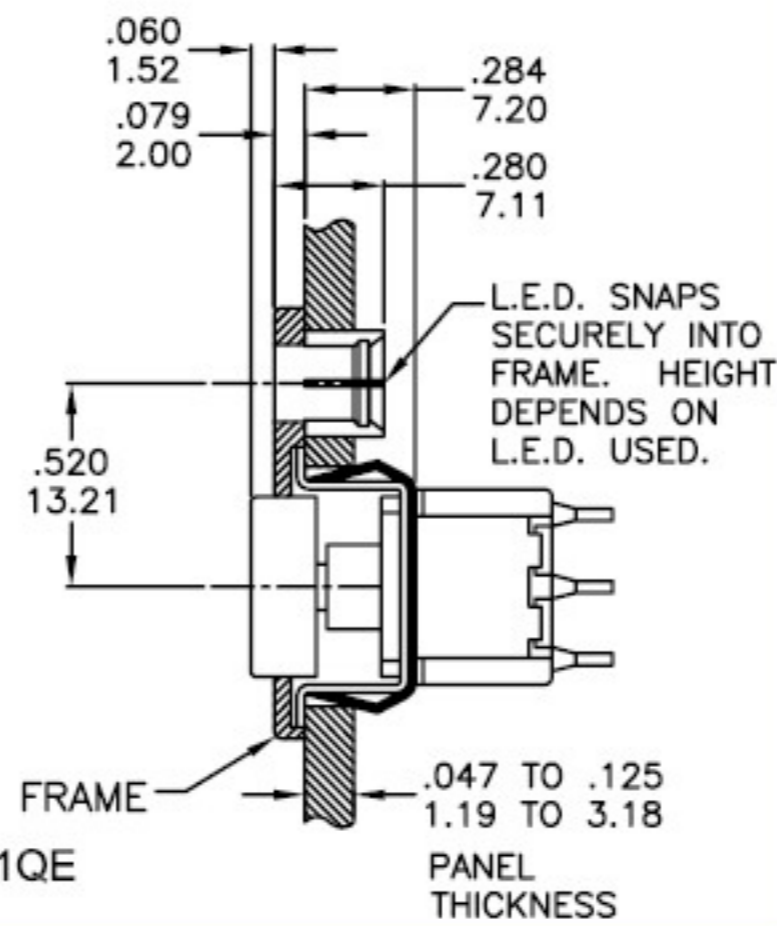
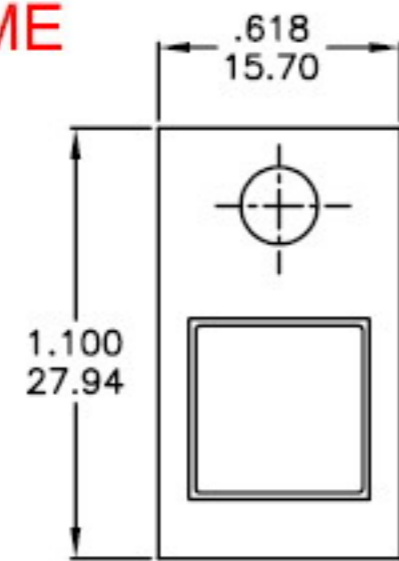
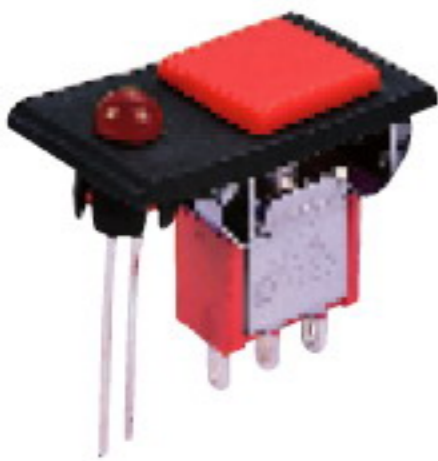
INCREASE TO .620/.625 15.75/15.88 FOR .091/.125 2.31/3.18 THK PANEL

PANEL LAYOUT

DPDT

Part No. Shown : 7MD7AP423M1RE

AP5 CAP & FRAME



PANEL LAYOUT

CAP AND FRAME COLORS

OPTION CODE	COLOR
1	WHITE
2	BLACK(std)
3	RED

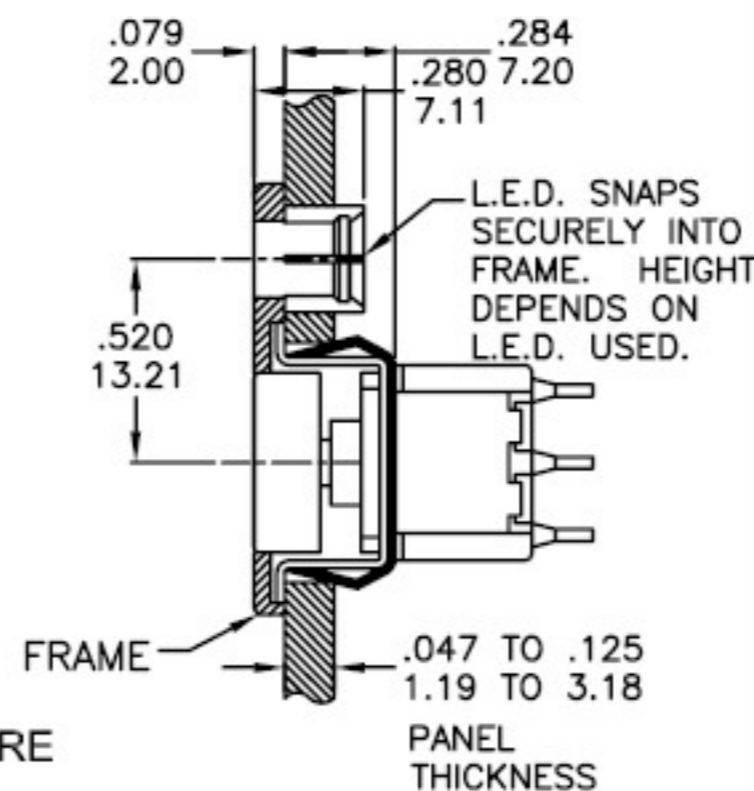
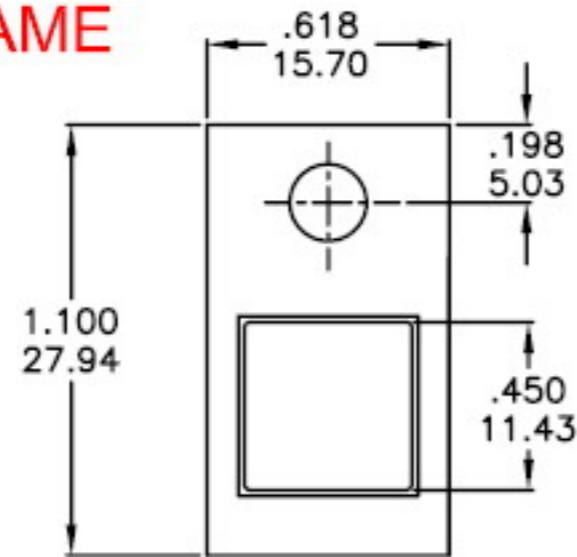
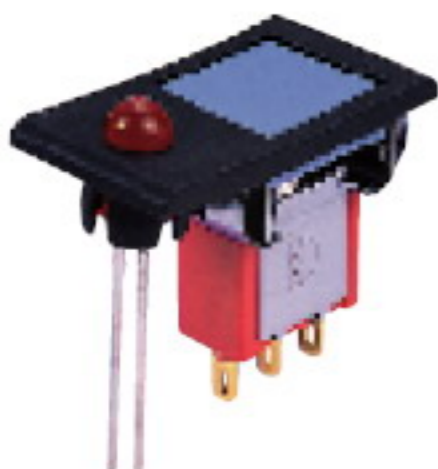
LED COLORS

OPTION CODE	COLOR
3	RED(std)
4	ORANGE
6	GREEN

SPDT

Part No. Shown : 7MS7AP523M1QE

AP6 CAP & FRAME

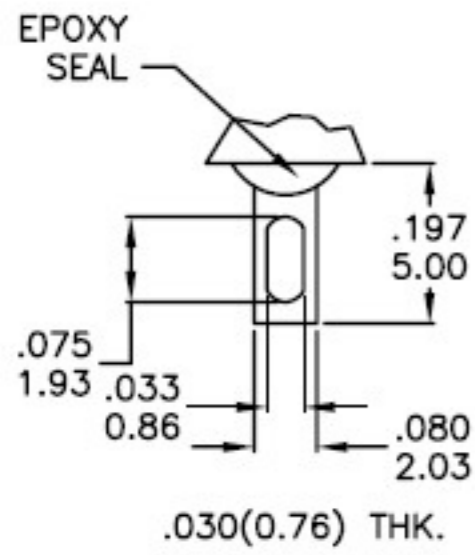


DPDT

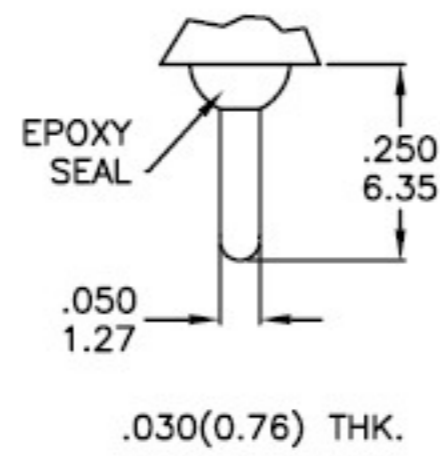
Part No. Shown : 7MS7AP623M1RE

TERMINATION OPTIONS

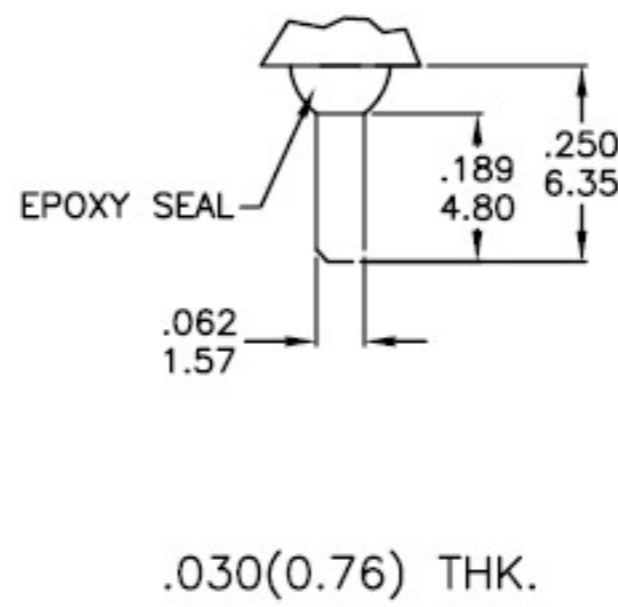
M1 SOLDER LUG



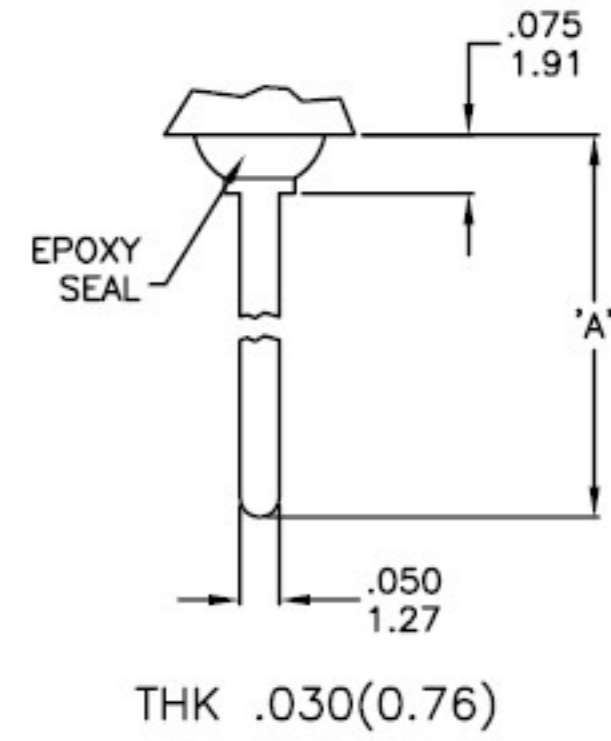
M2 P.C. MOUNT



M3 QUICK CONNECT



M5 WIRE WRAP



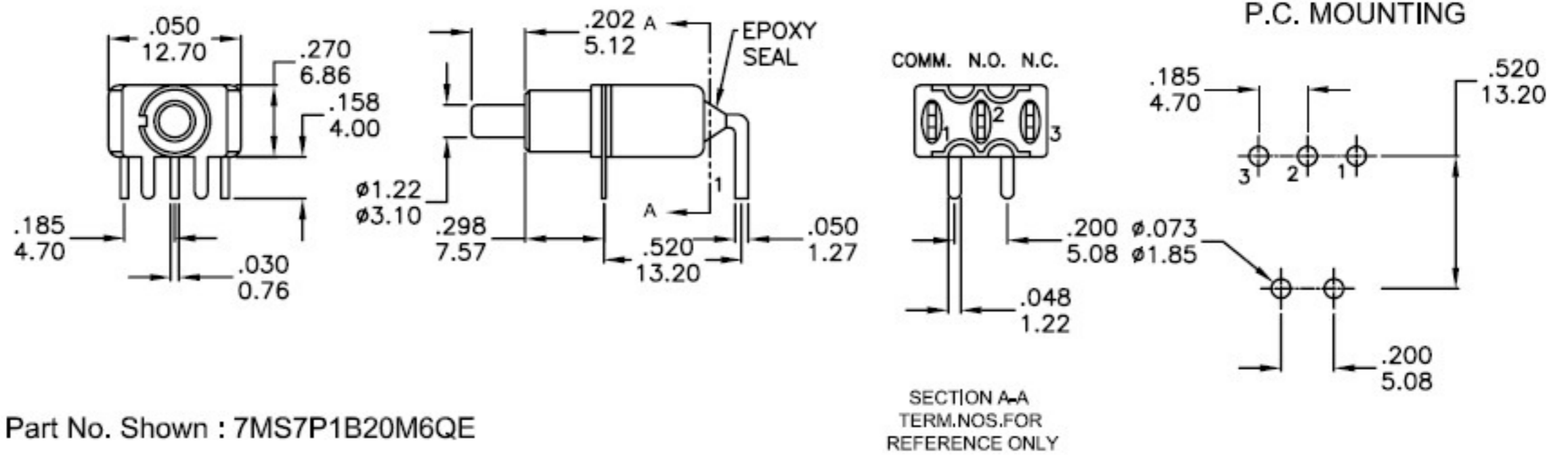
OPTION CODE	DIM. 'A'
M5-1	.750(19.05)
M5-2	.964(24.48)
M5-3	.426(10.80)
M5-4	.650(16.50)

OTHER TERMINATION OPTIONS

- M6 RIGHT ANGLE P.C. MOUNT
- M7 RIGHT ANGLE P.C. MOUNT
- VS2 VERTICAL SUPPORT P.C. MOUNT
- VS3 VERTICAL SUPPORT P.C. MOUNT
- VS4 VERTICAL SUPPORT P.C. MOUNT
- VS5 VERTICAL SUPPORT P.C. MOUNT

RE Mating Quick Connector
Amp P/N 60900-1

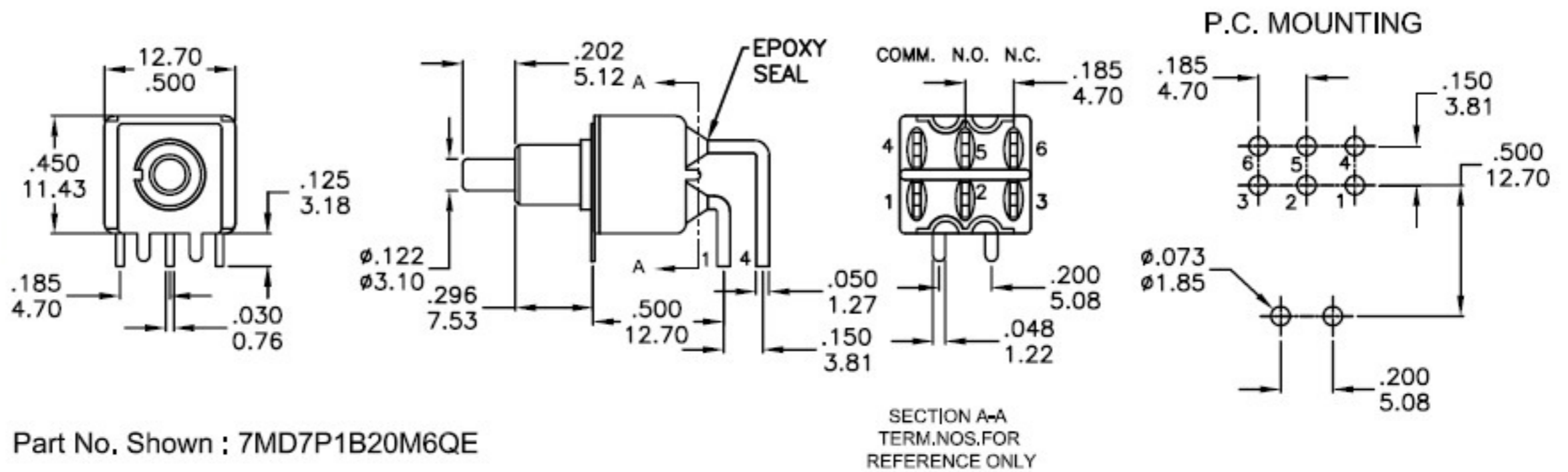
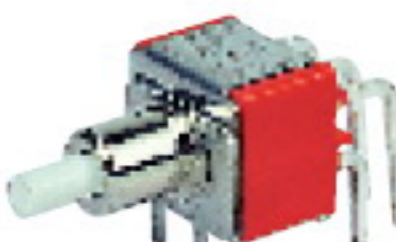
M6



SPDT

Part No. Shown : 7MS7P1B20M6QE

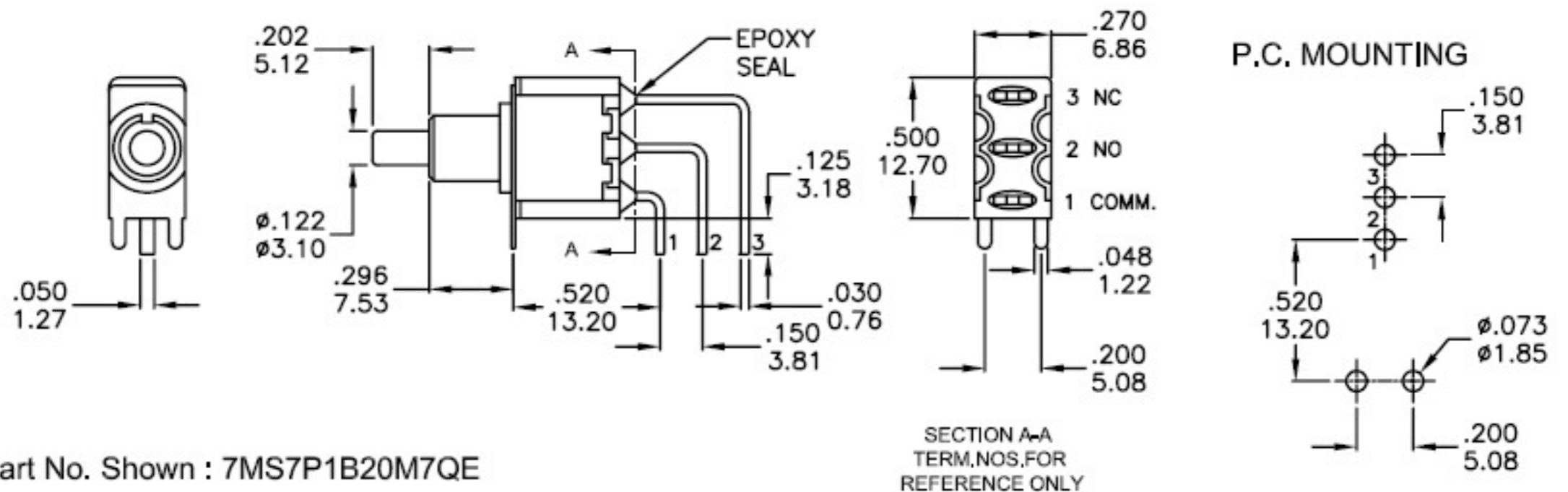
M6



DPDT

Part No. Shown : 7MD7P1B20M6QE

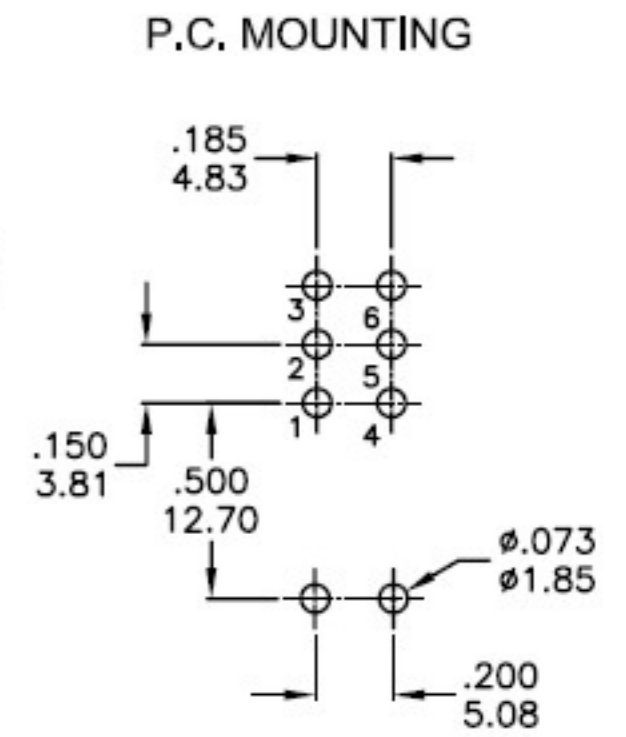
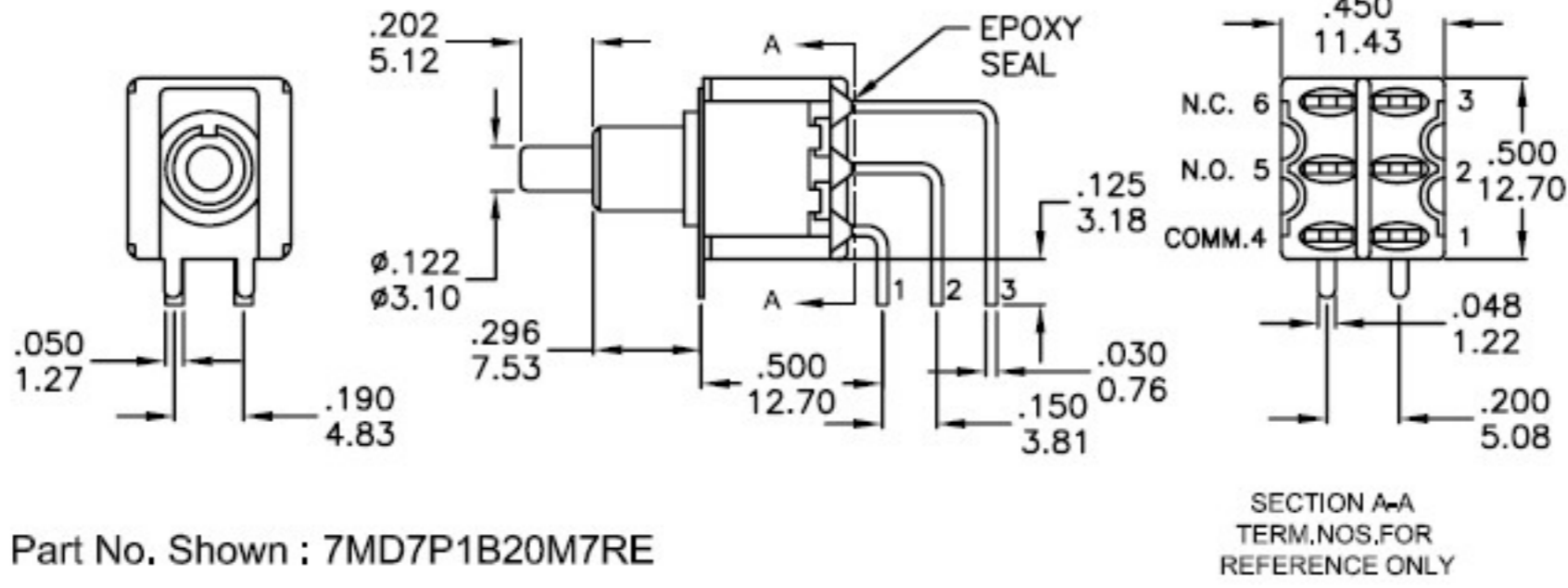
M7



SPDT

Part No. Shown : 7MS7P1B20M7QE

M7

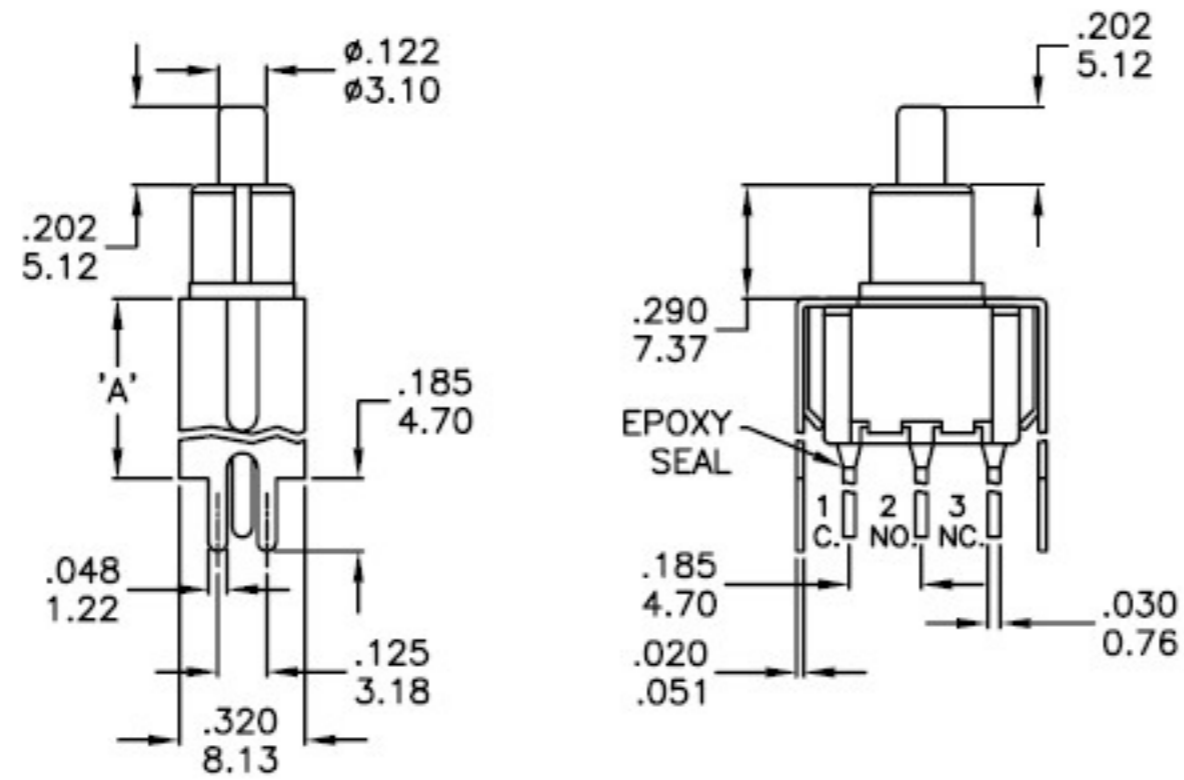
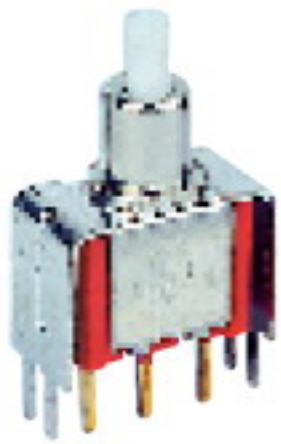


DPDT

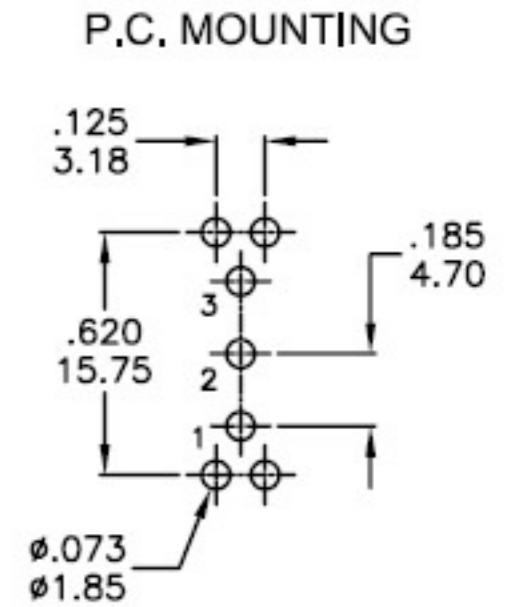
Part No. Shown : 7MD7P1B20M7RE

SECTION A-A
TERM. NOS. FOR
REFERENCE ONLY

VS2-VS3



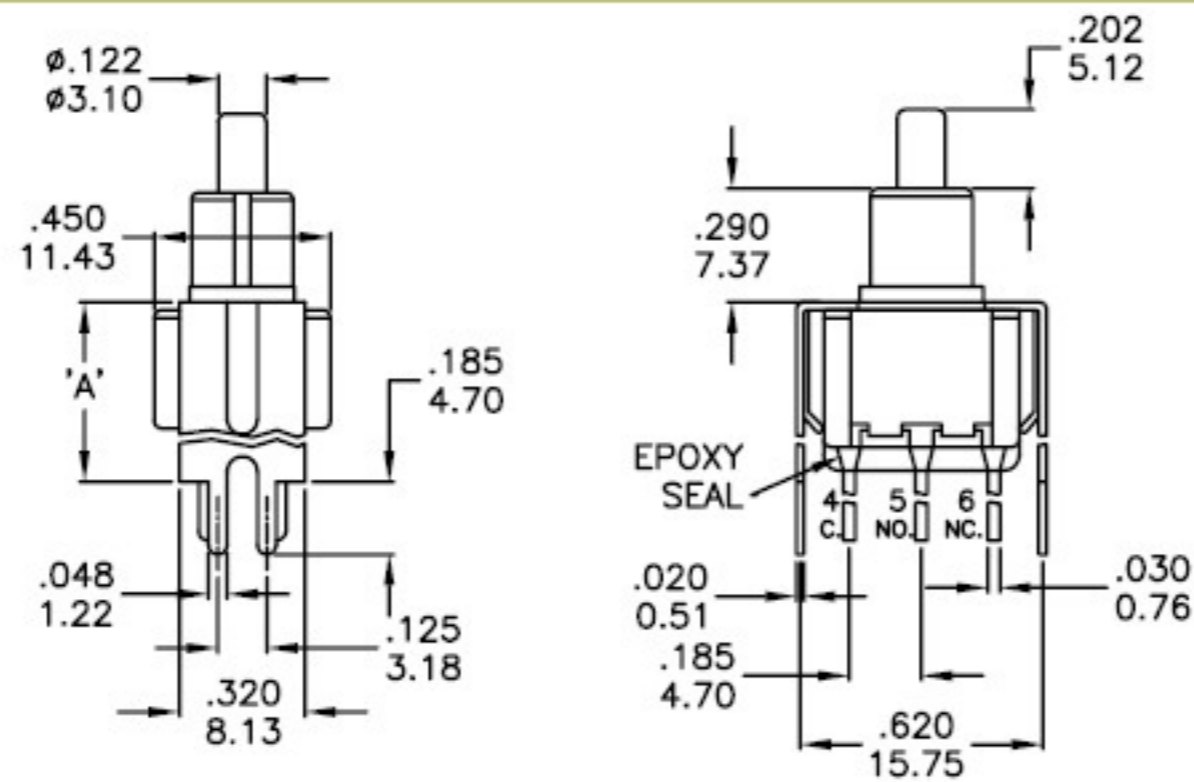
OPTION CODE	DIM. 'A'
VS2	.460 11.68
VS3	.630 16.00



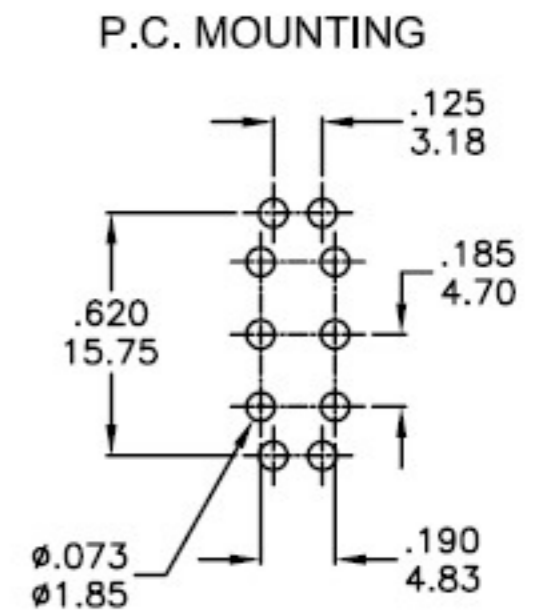
SPDT

Part No. Shown : 7MS7P1B20V2RE

VS2



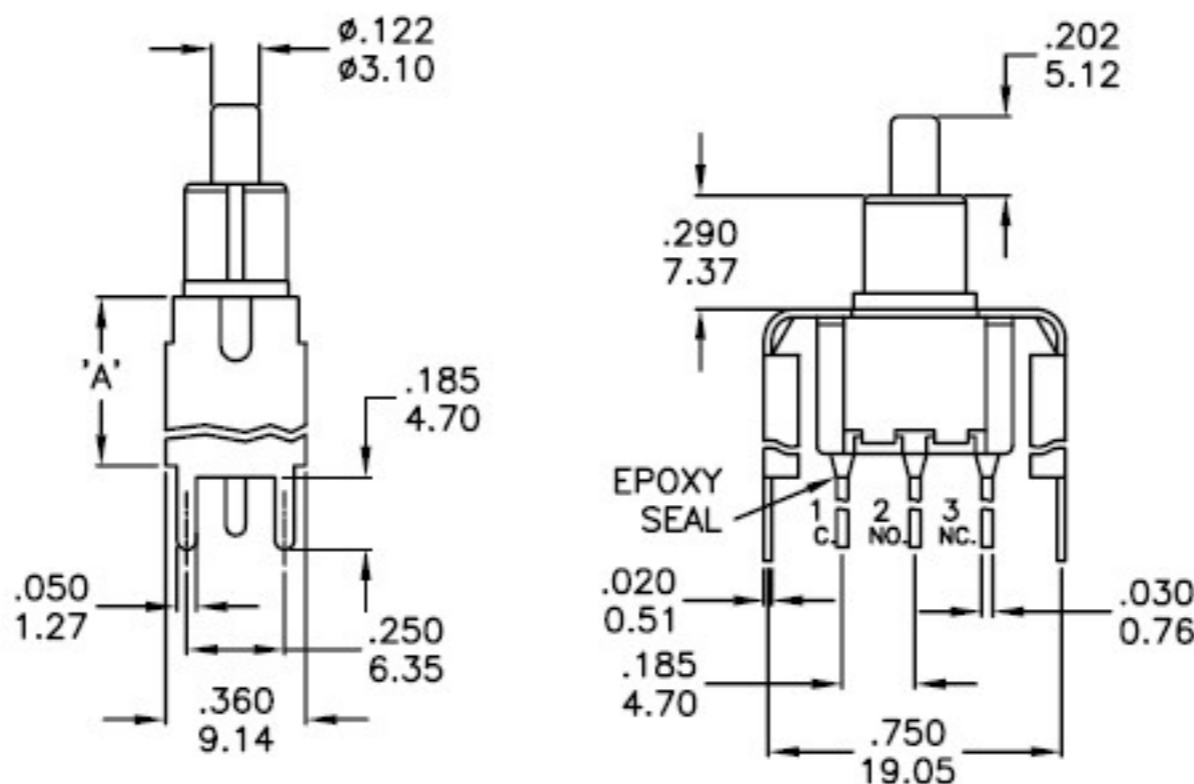
OPTION CODE	DIM. 'A'
VS2	.460 11.68
VS3	.630 16.00



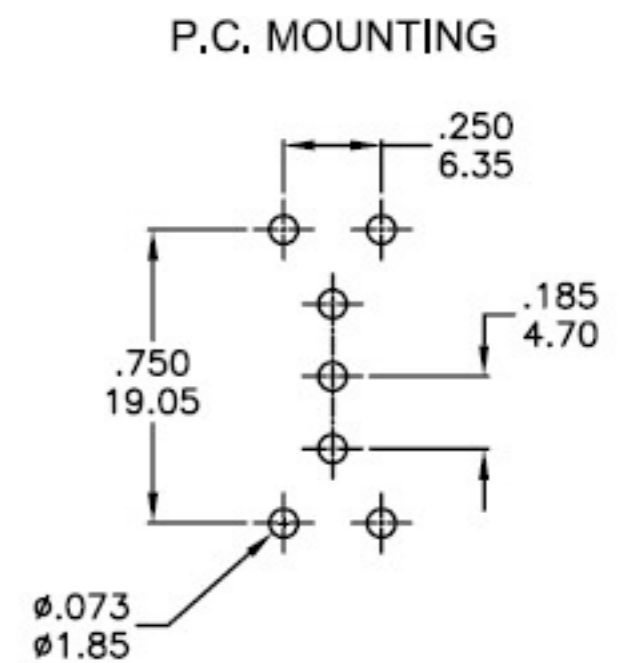
DPDT

Part No. Shown : 7MD7P1B20V2QE

VS4-VS5



OPTION CODE	DIM. 'A'
VS4	.460 11.68
VS5	.630 16.00



SPDT

Part No. Shown : 7MS7P1B20V4QE

