

# Thermal Cut-Out

## AMT-C1

### Datasheet



紘緯科技股份有限公司  
**Honest-Well Co., Ltd.**

3F, NO.450, SEC. 2, Chung-San Rd., Chung-Ho City,

Taipei ,Taiwan

**Tel : +886-2-2222-2398 (REP.)**

**Fax: +886-2-2222-2508 ; +886-2-3234-3512**

<http://www.honest-well.com.tw>

1. **Product Name:** : Thermal Cut-Out (AMT-C1 series)

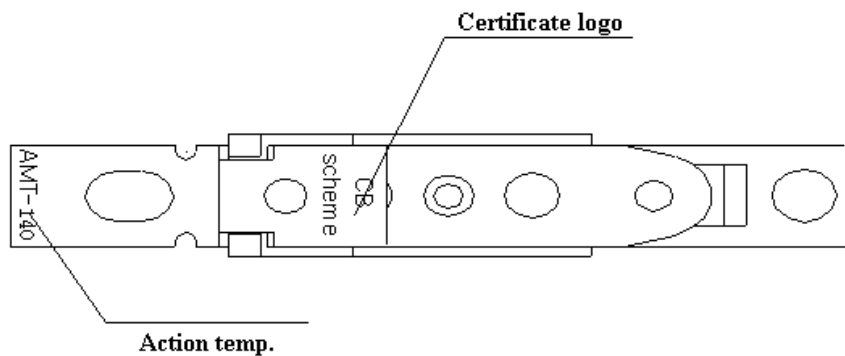
2. **Rating :**

➤ AC250V/5A AC250V/10A ; AC125V/16A

3. **Temperature :**

- Action temp. ( OFF ) :  $\pm 5^{\circ}\text{C}$
- Reset temp ( ON ) : differential  $15^{\circ}\text{C}—45^{\circ}\text{C}$

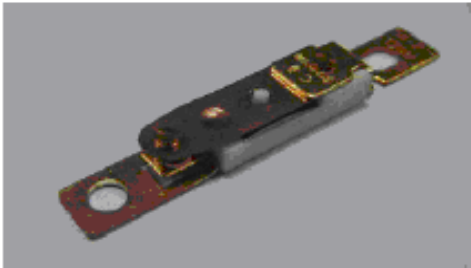
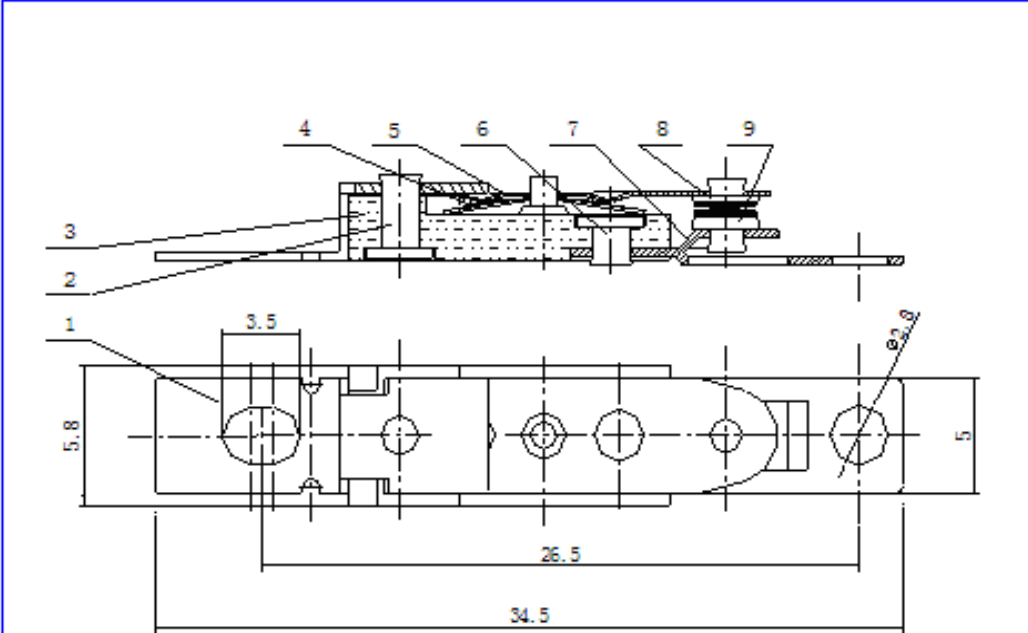
4 **Mark description:**



5 **Temperature range :**

Temp.Mark	Action temp.	Reset temp.	Temp.Mark	Action temp.	Reset temp.
TF.Tf( $^{\circ}\text{C}$ )	$^{\circ}\text{C}$	TH.Th.TC(K)	TF.Tf( $^{\circ}\text{C}$ )	$^{\circ}\text{C}$	TH.Th.TC(K)
50	$50\pm 5$	differential 15--45	105	$105\pm 5$	differential 15--45
55	$55\pm 5$		110	$110\pm 5$	
60	$60\pm 5$		115	$115\pm 5$	
65	$65\pm 5$		120	$120\pm 5$	
70	$70\pm 5$		125	$125\pm 5$	
75	$75\pm 5$		130	$130\pm 5$	
80	$80\pm 5$		135	$135\pm 5$	
85	$85\pm 5$		140	$140\pm 5$	
90	$90\pm 5$		145	$145\pm 5$	
95	$95\pm 5$		150	$150\pm 5$	
100	$100\pm 5$				

6 Structure.



9	AMT-C1-09	Contact Point	Ag/Cu	1	
8	AMT-C1-08	Contact Point	Ag/Cu	1	
7	AMT-C1-07	Movable Arm	HB2	1	
6	AMT-C1-06	Short Rivet	T2	1	
5	AMT-C1-05	Movable Arm	QBe2.0	1	
4	AMT-C1-04	Bimetal	Bimetal	1	
3	AMT-C1-03	Ceramic Base	95 ceramic	1	
2	AMT-C1-02	Long Rivet	T2	1	
1	AMT-C1-01	Terminal	HB2	1	
<b>NO.</b>	<b>Part NO.</b>	<b>Part Name</b>	<b>Material</b>	<b>Q'ty</b>	<b>Remark</b>
			<b>Model:</b>		<b>Honest-Well</b>
			<b>AMT-C1</b>		
					<b>Thermal Cut-Out</b>