

# MPB25

## 25mm Metal Pushbutton Switches

IP 67  
ACCORDING TO  
EN 60529:1991+A1:2001  
IEC 60529:2001

C **UL** US  
E 187490

**RoHS**  
compliant

**Pb**  
lead-free

### SPECIFICATIONS

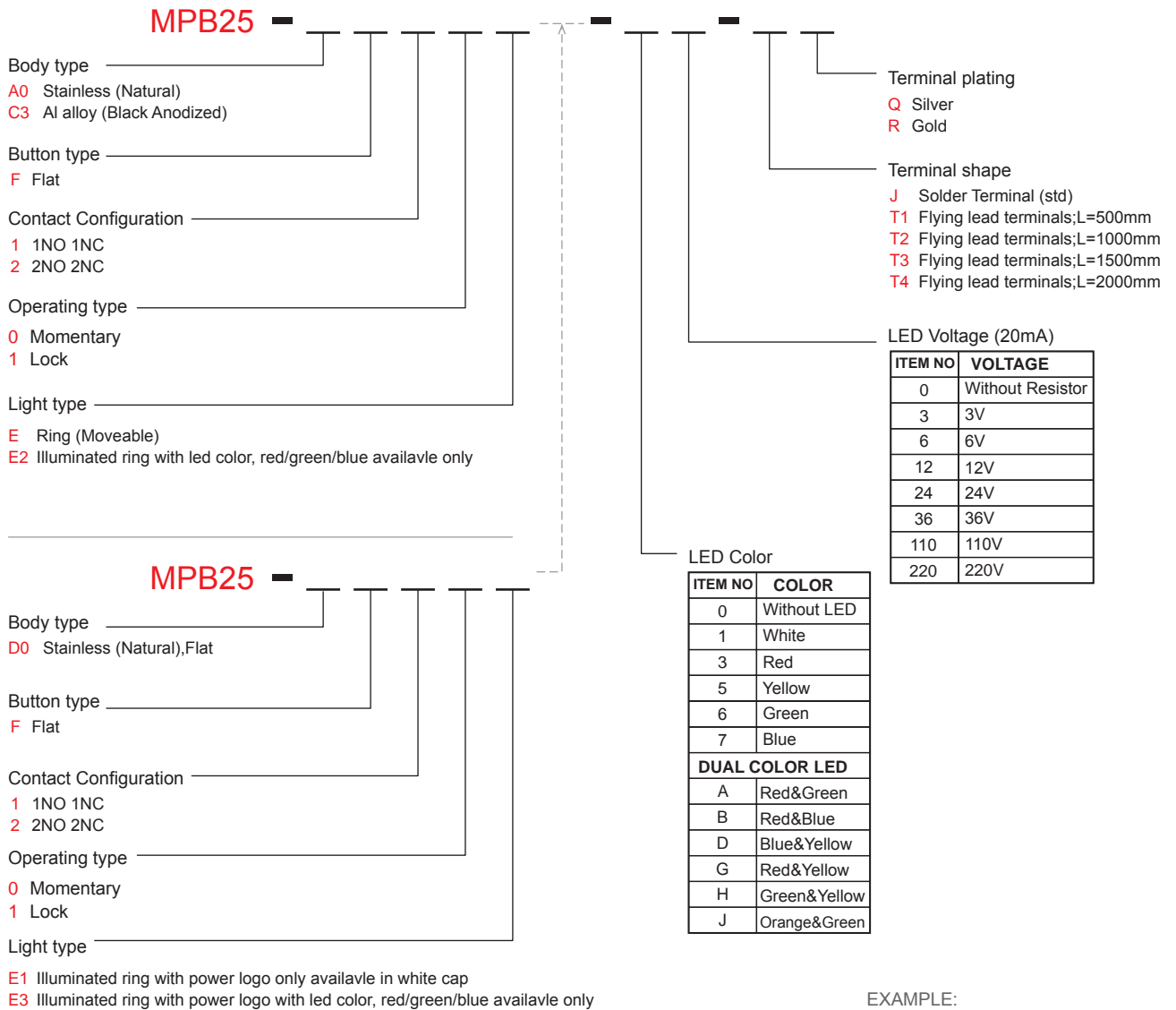
**RATING** : Ith 5A/250VAC resistive load 3A/250VAC  
**CONTACT RESISTANCE** : 50 mΩ max. @ 1A 12VDC (initial value)  
**INSULATION RESISTANCE** : 1,000 MΩ min. at 500VDC  
**DIELECTRIC STRENGTH** : 2,000V RMS @ sea level  
**OPERATION TEMPERATURE** : -20°C to 55°C  
**MECHANICAL LIFE** : Momentary 1,000,000 cycles ;  
 Self-lock 500,000 cycles  
**ELECTRICAL LIFE** : 50,000 make-and-break cycles at full load  
**TORQUE** : 5~14Nm  
**PANEL THICKNESS** : 10mm (Ø25.20mm)  
**OPERATION PRESSURE** : 1Pole 2.5±1N / 2Poles 3.5±1N  
**TRAVEL** : About 3.2mm  
**INGRESS PROTECTION** : IP67, IK08(Stainless)



### MATERIALS

**BUSHING** : Stainless Steel / Aluminum alloy  
**BASE** : PBT(UL 94-V0) , PC(UL 94-V2)  
**ACTUATOR** : PC; Stainless Steel / Aluminum alloy  
**INNER ASSEMBLY** : POM / PA66.  
**SPRING** : Spring steel.  
**SEALING** : Silicone.  
**O-Ring** : Silicone.  
**TERMINAL** : Brass, with silver or gold plated.  
**CONTACT** : Brass, Coin silver,with silver or gold plated.  
**HEX NUT** : Nickel plated brass

### HOW TO ORDER



EXAMPLE:  
 MPB25-A0F10E-JQ (Without LED)  
 MPB25-A0F10E-324-JQ  
 LED color — | — LED voltage

## 25mm Metal Pushbutton Switches

### CIRCUIT

POSITION 1

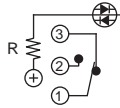


POSITION 2

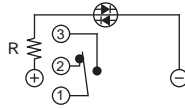


Without LED (1 Pole)

POSITION 1

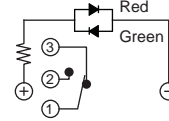


POSITION 2

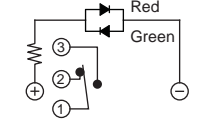


Single Color Led (1 Pole)

POSITION 1

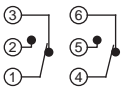


POSITION 2

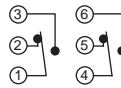


Dual Color Led (1 Pole)

POSITION 1

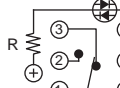


POSITION 2



Without LED (2 Poles)

POSITION 1

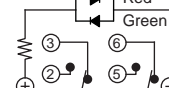


POSITION 2

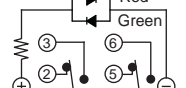


Single Color Led (2 Poles)

POSITION 1

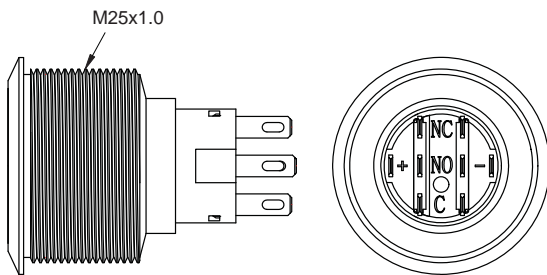


POSITION 2

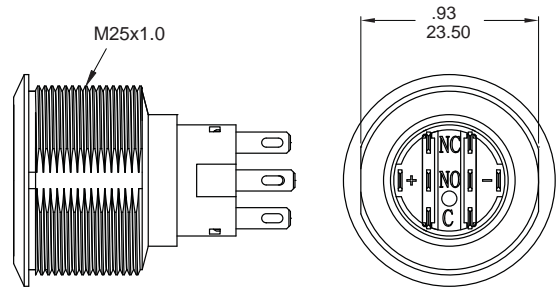


Dual Color Led (2 Poles)

### BODY TYPE



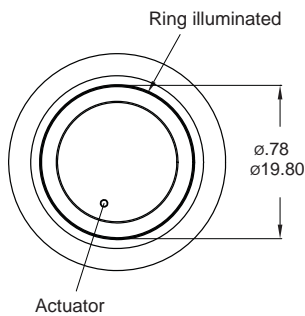
A0 / C3 Body



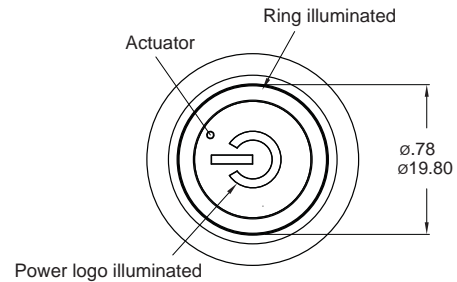
D0 Body (Flat)

### LIGHT TYPE

E Ring (Moveable)



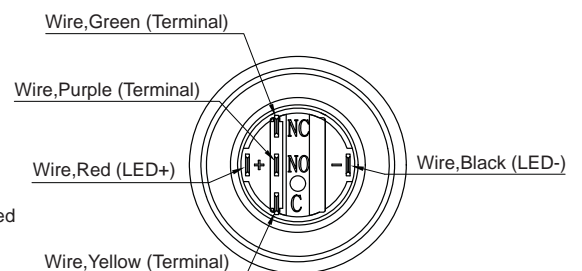
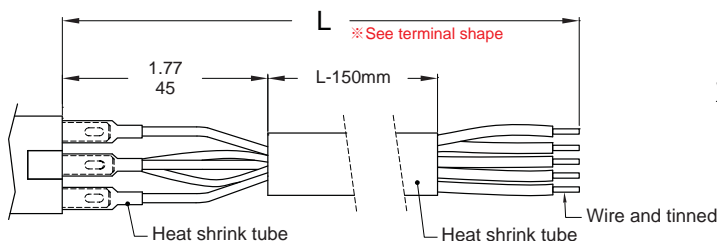
E3 Ring+Power logo



\* Only for D0 body type.

### Wire (Flying lead Terminals)

※ Wire=UL 3385,18AWG,300V(Black/Yellow/Green/Red/Purple)



# MPB25

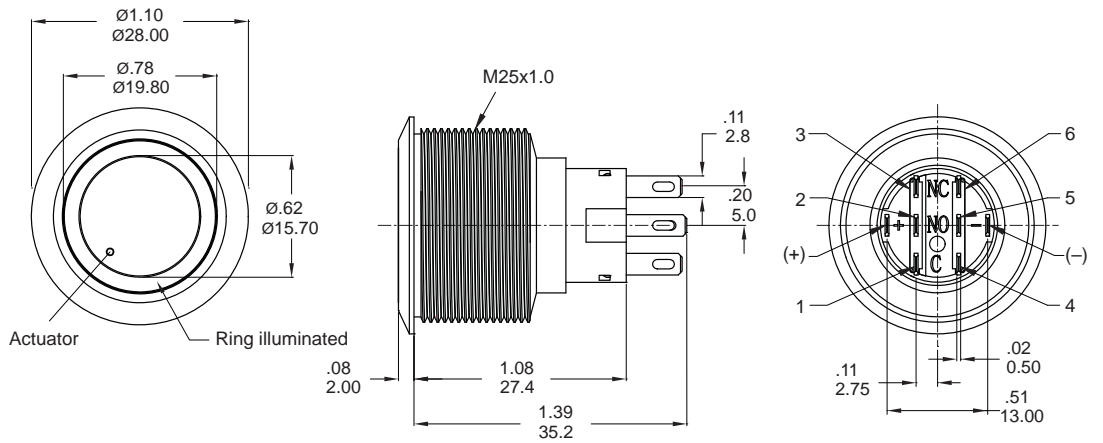
## 25mm Metal Pushbutton Switches

LIGHT TYPE

**R** Ring(Moveable)



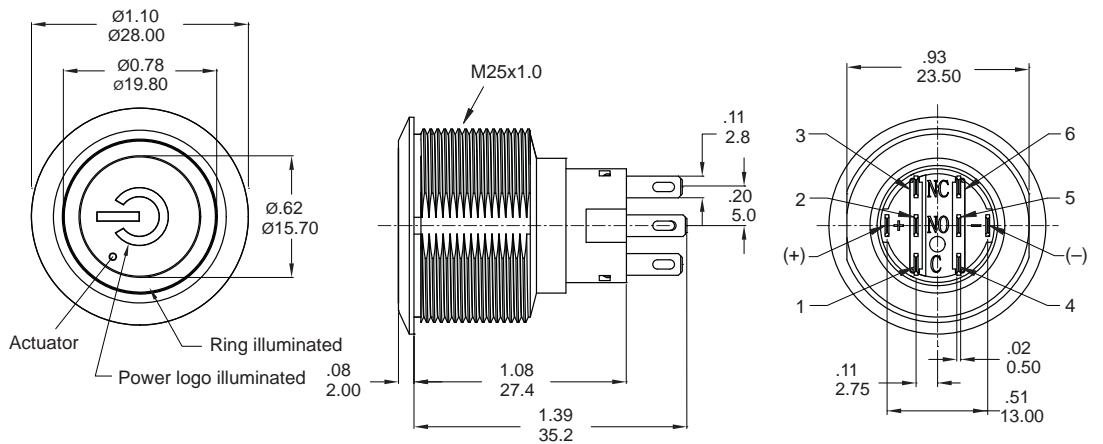
Part No. Shown :  
MPB25-A0F2□□E-□□-JQ



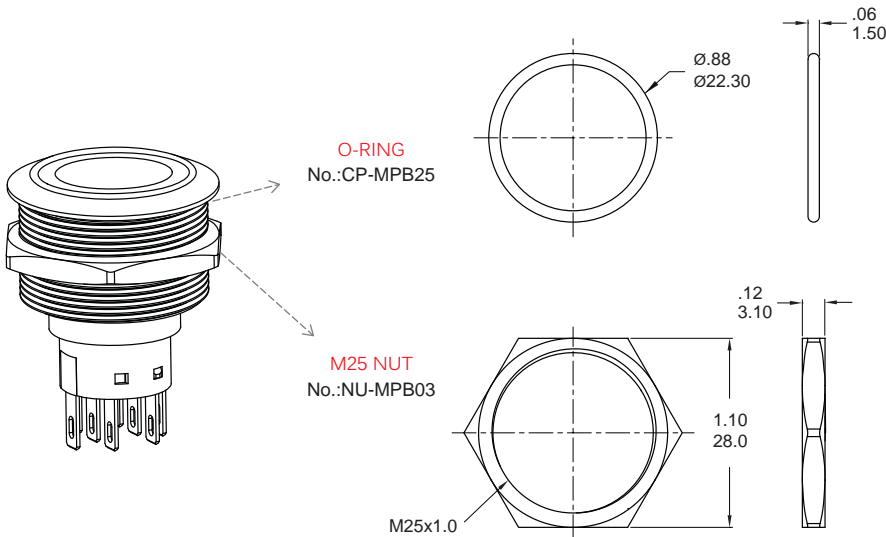
**E3** Ring+Power logo



Part No. Shown :  
MPB25-D0F2□□E3-□□-JQ

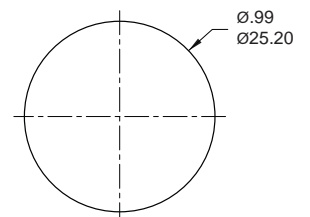


### ASSEMBLED VIEW

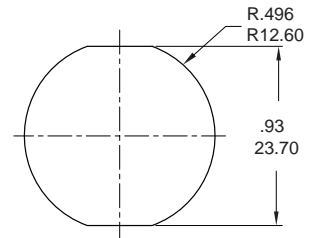


### PANEL MOUNTING

Max. Panel thickness: 10.0mm[0.39]



**A0 / C3** Body Type



**D0** Body Type

### O-RING INSTALLATION

