

### SPECIFICATIONS

**RATING :** 2A/36VDC

**ELECTRICAL LIFE:** 200,000 make-and-break cycles at full load.

**MECHANICAL LIFE:** 1,000,000. Cycles

**DIELECTRIC STRENGTH:** 2,000V RMS@sea level

**CONTACT RESISTANCE:** 50mΩ MAX.@1A 12VDC(initial value)

**OPERATING TEMPERATURE:** -20°C to 70°C

**TRAVEL:** ABOUT 1.8mm

**OPERATION PRESSURE:** 4.5±1.5N

**INGRESS PROTECTION:** IP67,IK10(Stainless)

**TORQUE:** 1~3Nm

Current limiting resistor is required to limit led forward current to 20mA



### MATERIALS

**BUSHING :** Stainless Steel

**BASE :** PA66,White UL-94V0

**ACTUATOR :** PC,Translucent UL-94V2  
Stainless Steel

**INNER ASSEMBLY :** PC,Transparent UL-94V2

**SPRING :** Spring steel

**SEALING :** Silicone,Translucent

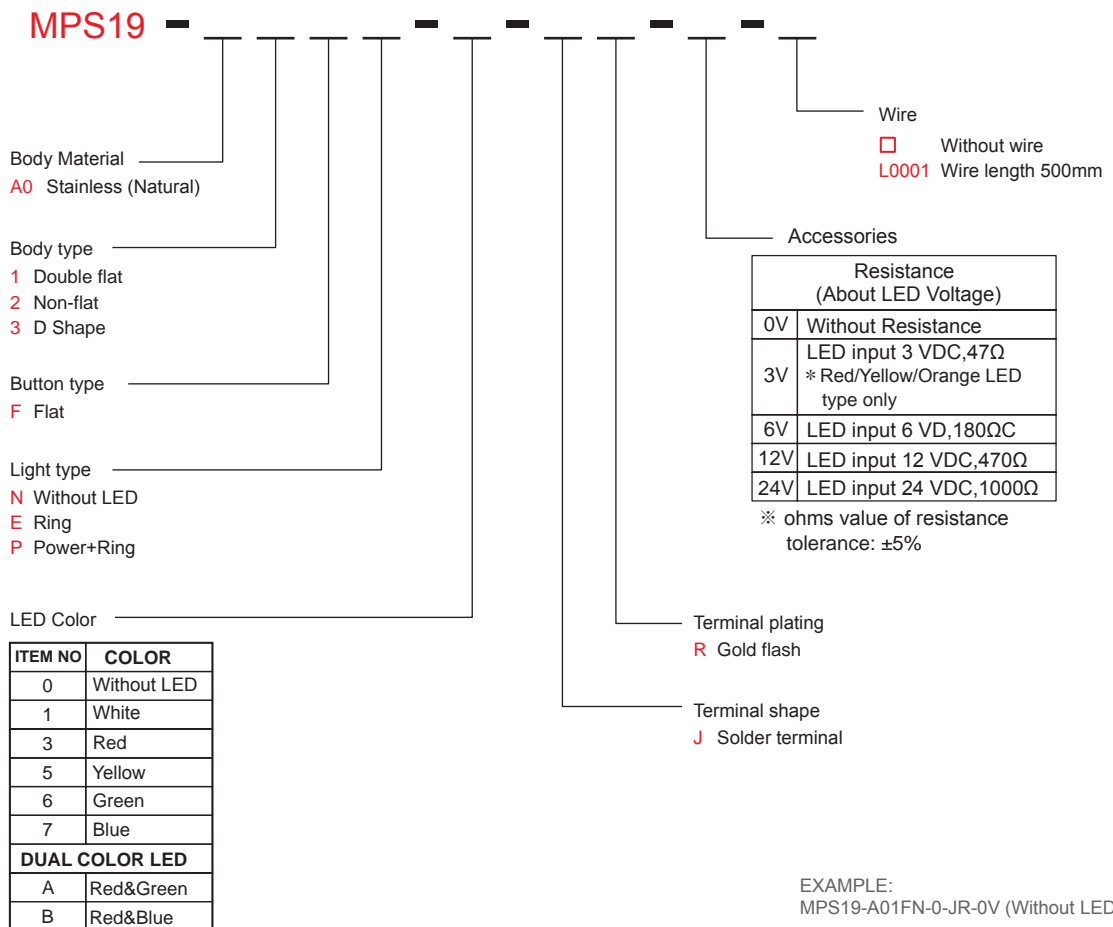
**O-Ring :** Silicone,Black

**TERMINAL :** Brass, Gold flash plated

**CONTACT :** Brass, Silver alloy

**HEX NUT :** Brass, Nickel plated

### HOW TO ORDER



EXAMPLE:  
MPS19-A01FN-0-JR-0V (Without LED)  
MPS19-A01FE-□-JR-□V  
LED color LED voltage  
MPS19-A01FE-3-JR-12V-L0001(Wire)

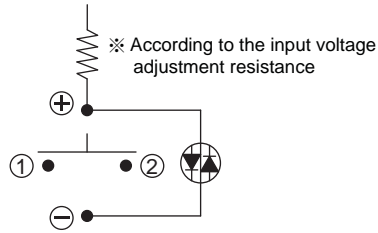
# MPS19

## 19mm Short Metal Pushbutton Switches

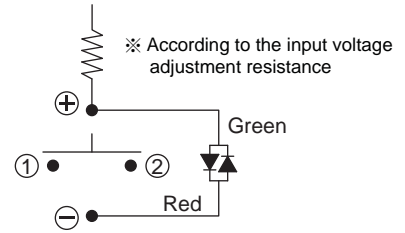
### CIRCUIT



Without Led



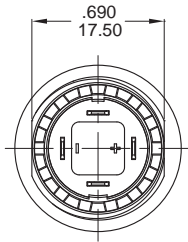
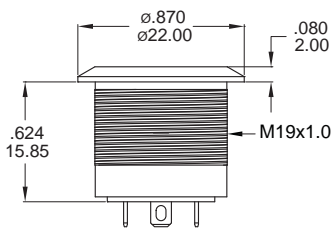
Single Color Led



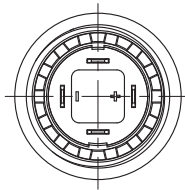
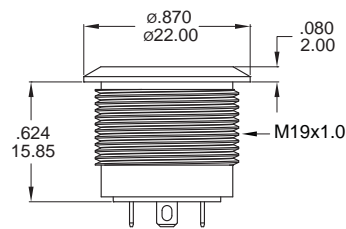
Dual Color Led

### BODY TYPE

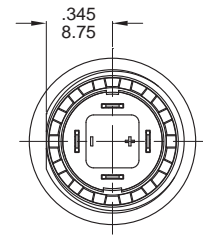
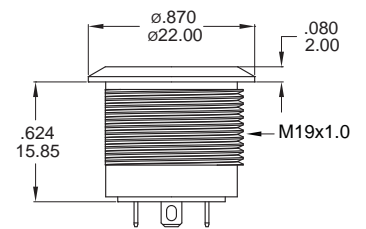
Double flat



Non-flat

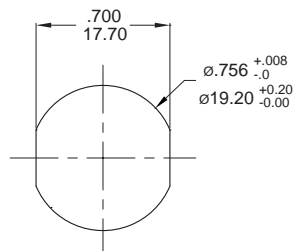


D Shape

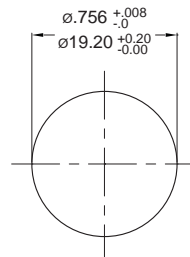


### PANEL CUTOUT

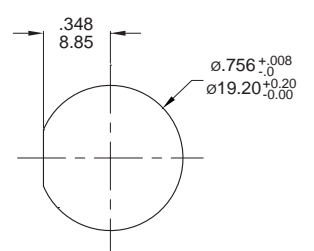
Thickness: 6.0mm(Max.)



Double flat



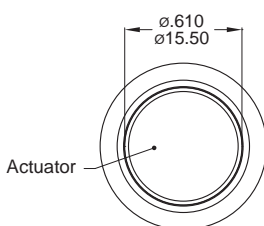
Non-flat



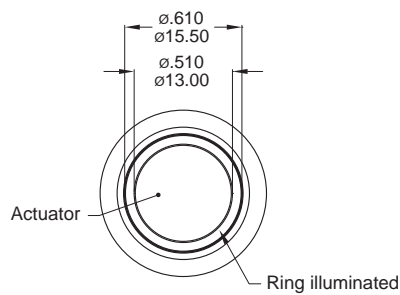
D Shape

### LIGHT TYPE

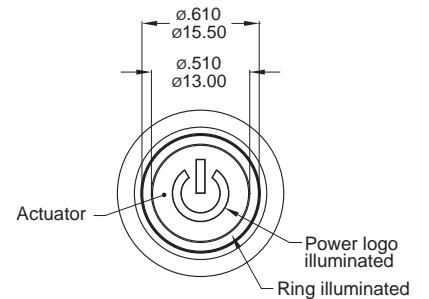
N Without LED



E Ring



P Power+Ring



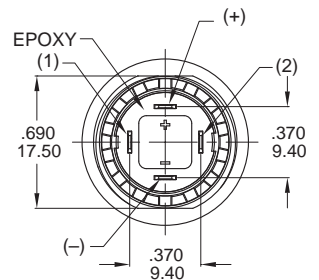
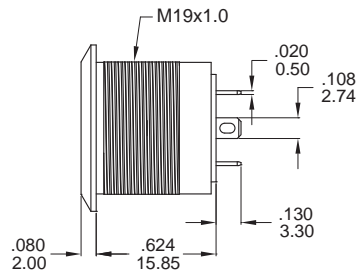
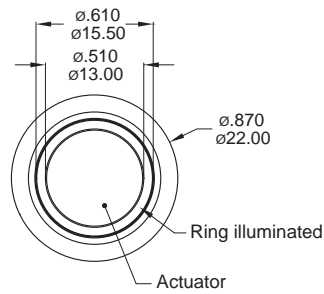
## 19mm Short Metal Pushbutton Switches

### LIGHT TYPE

#### E Ring



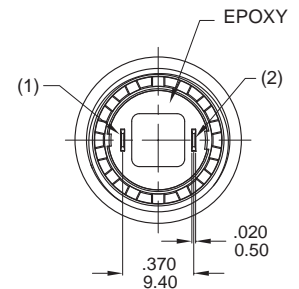
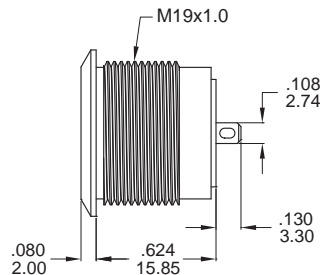
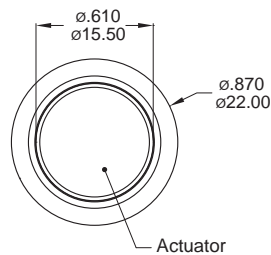
Part No. Shown :  
MPS19-A01FE-□-JR-□V



#### N Without LED



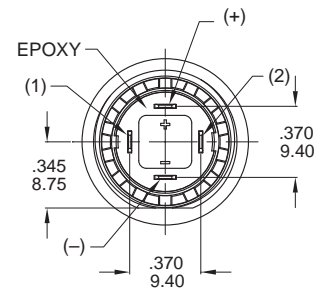
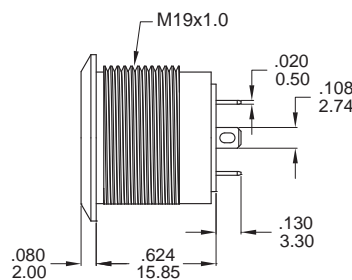
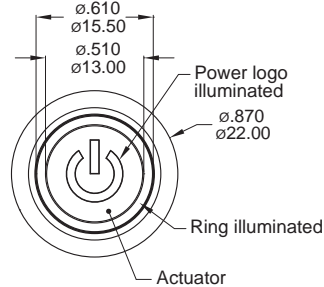
Part No. Shown :  
MPS19-A02FN-0-JR-0V



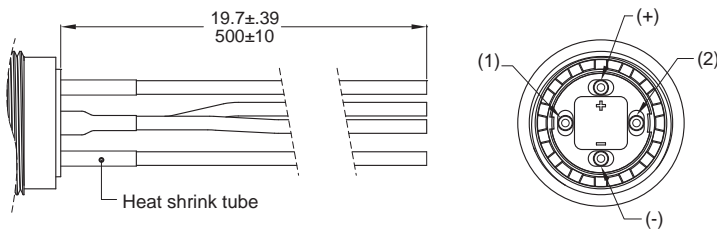
#### P Power+Ring



Part No. Shown :  
MPS19-A03FP-□-JR-□V



#### L0001 ※Wire=Multi-wire lead AWG20,section 0.6mm<sup>2</sup>,UL approved

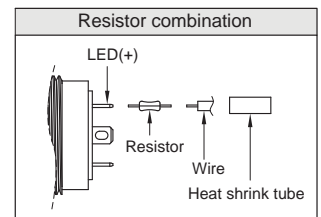


#### Non-LED

Description	Wire color
Terminal 1	Black
Terminal 2	Black

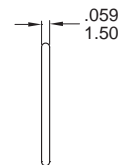
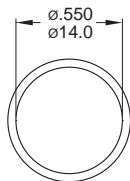
#### With LED

Description	Wire color
Terminal 1	Black
Terminal 2	Black
LED+	Red
LED-	Green

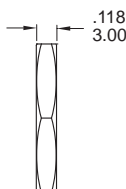
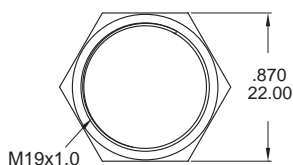


#### ADDITIONAL

**O-RING**  
No.:CP-PY02



**M19 NUT**  
No.:NU-MPB01



#### O-RING INSTALLATION

