

MPS22

22mm Short Metal Pushbutton Switches

IP 67
ACCORDING TO
EN 60529:1991+A1:2001
IEC 60529:2001



SPECIFICATIONS

RATING : 2A/36VDC

ELECTRICAL LIFE: 200,000 make-and-break cycles at full load.

MECHANICAL LIFE: 1,000,000. Cycles

DIELECTRIC STRENGTH: 2,000V RMS@sea level

CONTACT RESISTANCE: 50mΩ MAX.@1A 12VDC(initial value)

OPERATING TEMPERATURE: -20°C to 70°C

TRAVEL: ABOUT 1.8±0.2mm

OPERATION PRESSURE: 4.5±1.5N

INGRESS PROTECTION: IP67,IK10(Stainless)

TORQUE: 1~3Nm

Current limiting resistor is required to limit led forward current to 20mA



MATERIALS

BUSHING : Stainless Steel

BASE : PA66, White UL-94V0

ACTUATOR : PC, Translucent UL-94V2
Stainless Steel

INNER ASSEMBLY : PC, Transparent UL-94V2

SPRING : Spring steel

SEALING : Silicone, Translucent

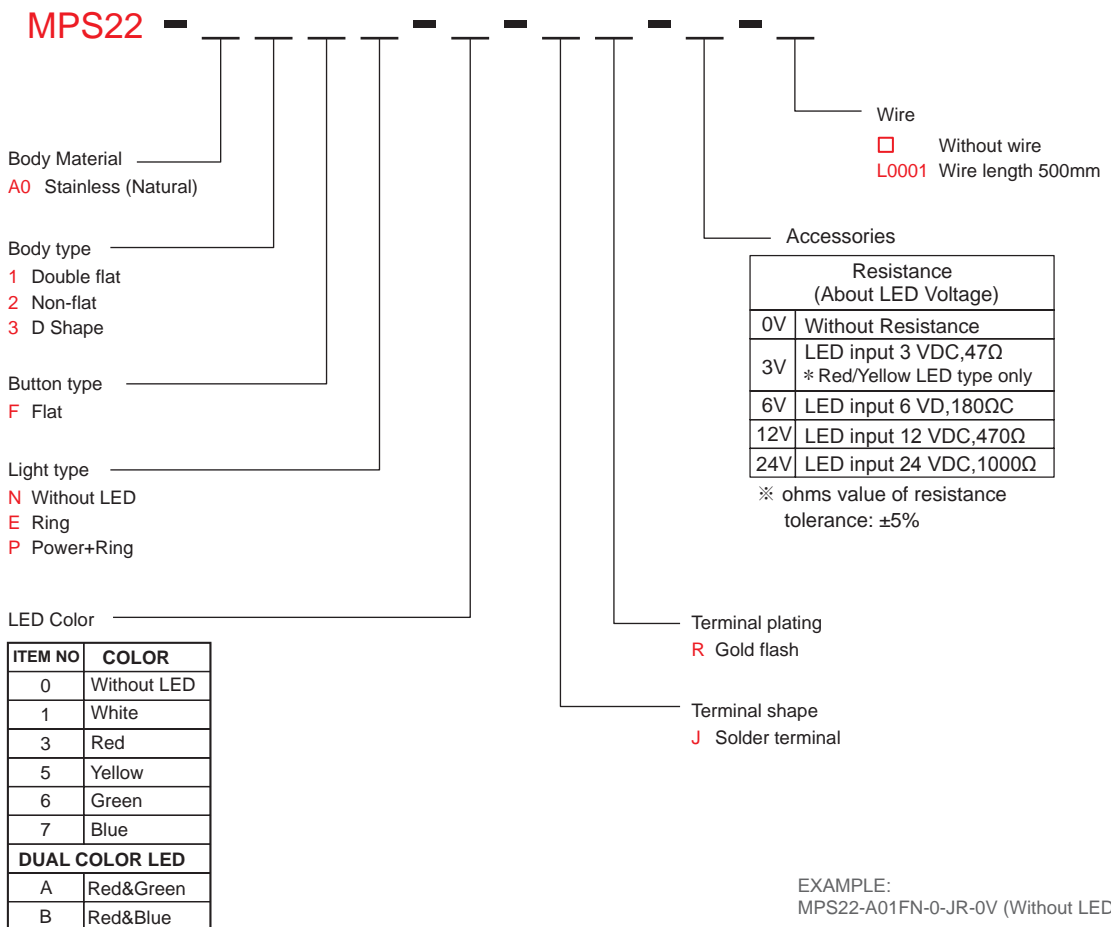
O-Ring : Silicone,Black

TERMINAL : Brass, Gold flash plated

CONTACT : Brass, Silver alloy

HEX NUT : Brass, Nickel plated

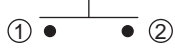
HOW TO ORDER



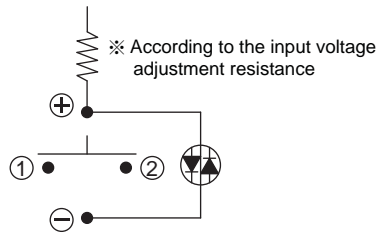
EXAMPLE:
MPS22-A01FN-0-JR-0V (Without LED)
MPS22-A01FE-□-JR-□V
LED color LED voltage
MPS22-A01FE-3-JR-12V-L0001(Wire)

22mm Short Metal Pushbutton Switches

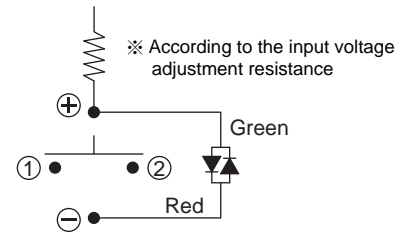
CIRCUIT



Without Led



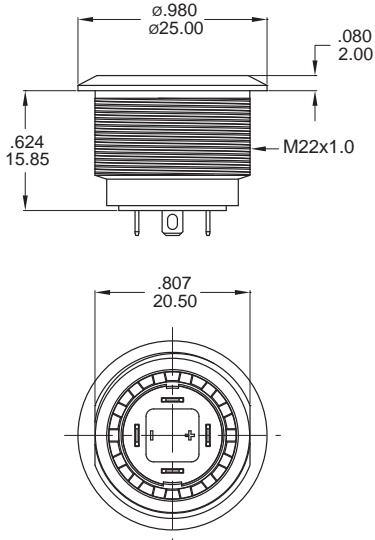
Single Color Led



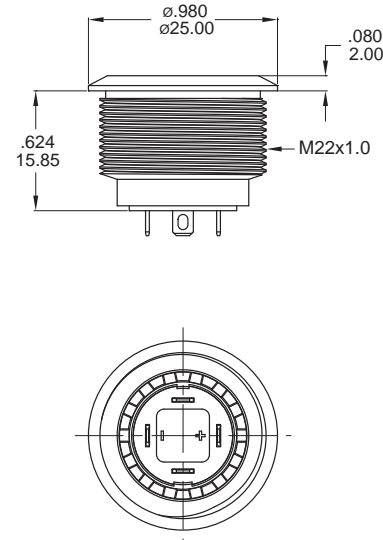
Dual Color Led

BODY TYPE

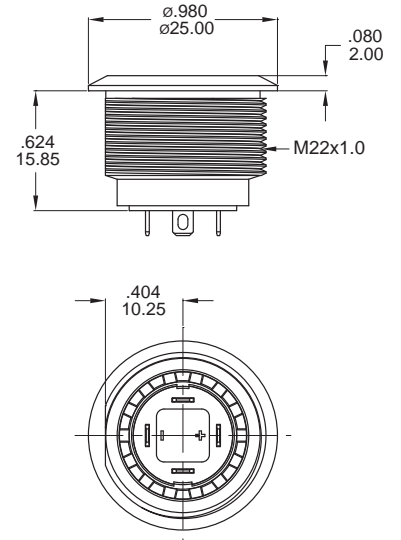
Double flat



Non-flat

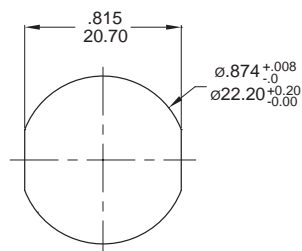


D Shape

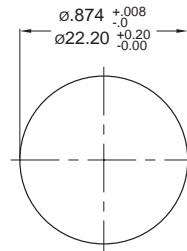


PANEL CUTOUT

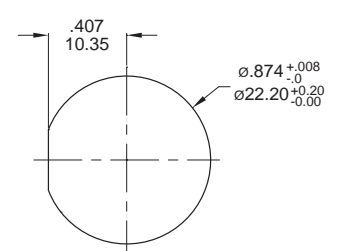
Thickness: 6.0mm(Max.)



Double flat



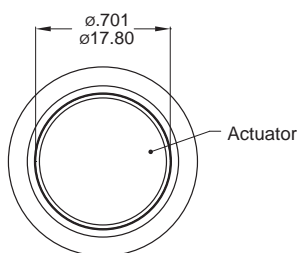
Non-flat



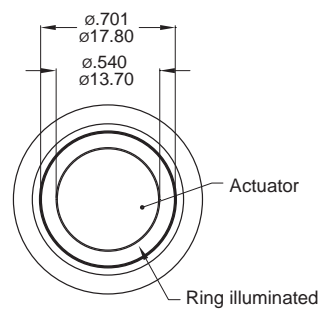
D Shape

LIGHT TYPE

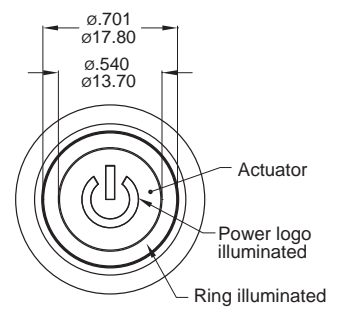
N Without LED



E Ring



P Power+Ring



MPS22

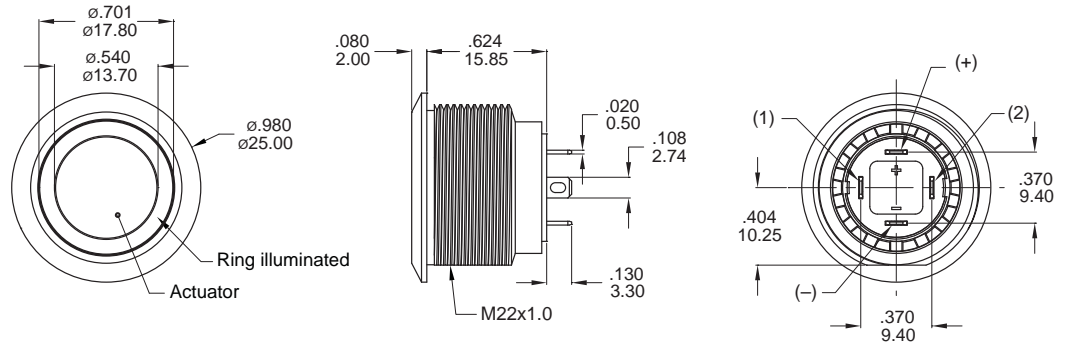
22mm Short Metal Pushbutton Switches

LIGHT TYPE

E Ring



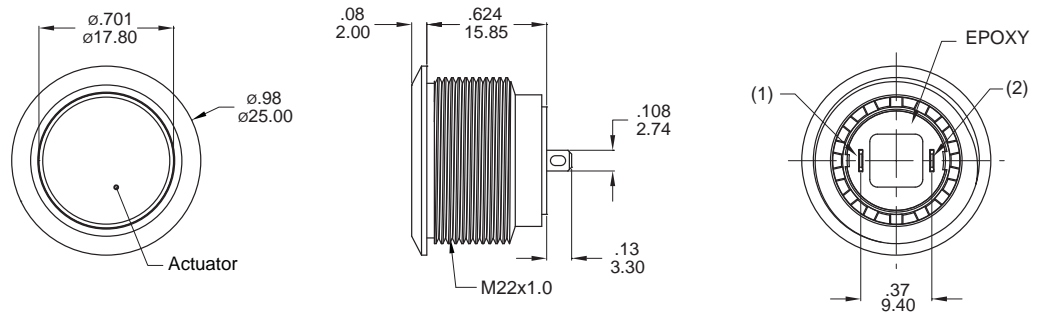
Part No. Shown :
MPS22-A03FE-□-JR-□V



N Without LED



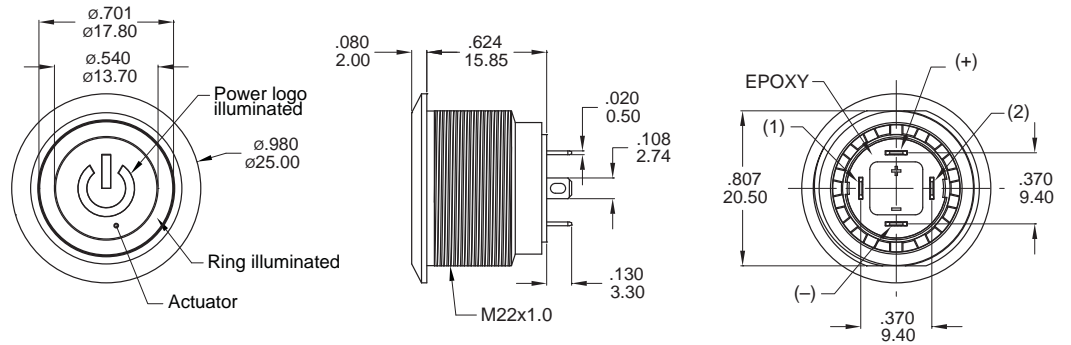
Part No. Shown :
MPS22-A02FN-0-JR-0V



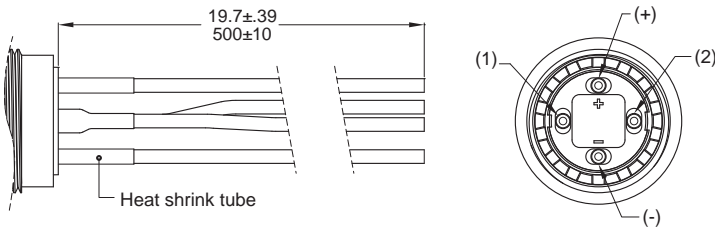
P Power+Ring



Part No. Shown :
PS22-A01FP-□-JR-□V



L0001 ※Wire=Multi-wire lead AWG20,section 0.6mm²,UL approved

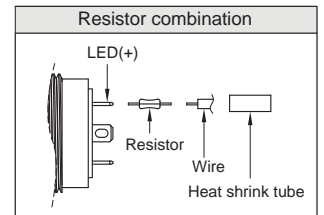


Non-LED

Description	Wire color
Terminal 1	Black
Terminal 2	Black

With LED

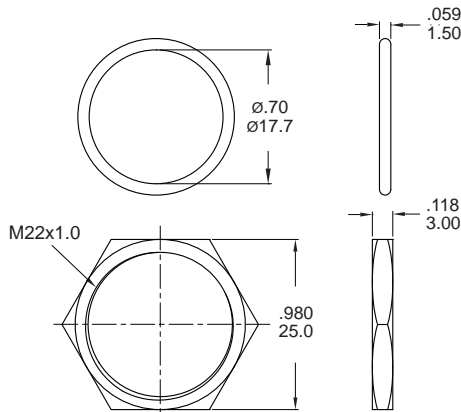
Description	Wire color
Terminal 1	Black
Terminal 2	Black
LED+	Red
LED-	Green



ADDITIONAL

O-RING

No.:CP-MPB07



M22 NUT

No.:NU-MPB02

O-RING INSTALLATION

