

MZ6T 系列用于电机保护 MZ6T FOR THE MOTOR PROTECTION



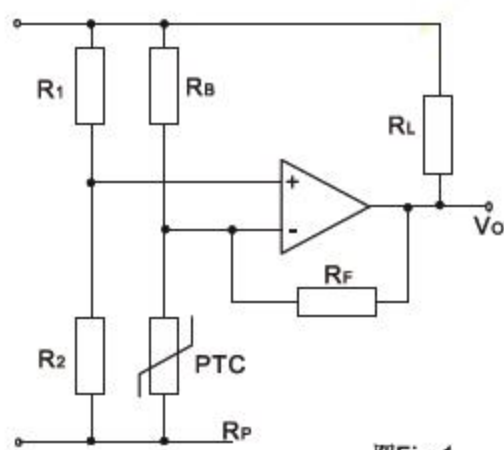
MZ6T 型 PTC 电机保护型热敏电阻是按照国际标准 DIN-44081 与 DIN-44082 为依据专业生产的适用于电机及其它部位的超温保护，将 PTC 热敏电阻器置于电机三相绕组线圈中，当温度达到绝缘等级温度时，PTC 阻值升高，将高阻态信号传递给控制保护器，保护器根据信号断开电机线路，保护电机。

根据 DIN 标准设计生产一系列珠状高绝缘产品，使温度保护达到系列化。本系列产品特点：
芯片体积小，反应速度快，长期使用性能稳定，可靠性高；特别是在电机缺相时，能迅速反应，保护电机。

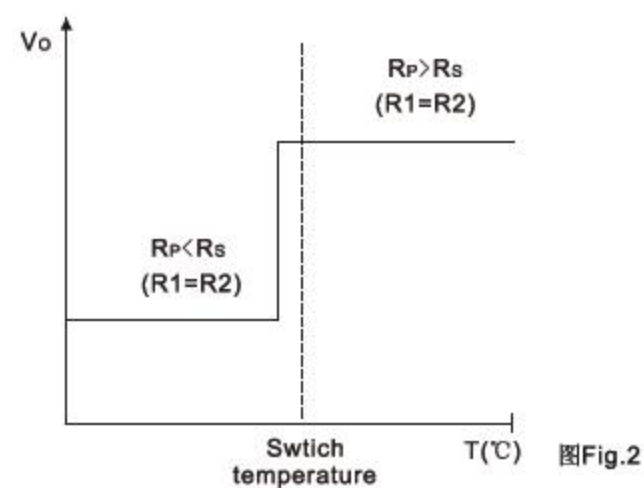
MZ6T type PTC motor protection type thermistor is according to the international standard DIN 44081 and DIN - 44081 specializing in the production on the basis of applicable to motor and other parts of the over temperature protection. Put PTC thermistor motor in a three-phase winding coil, when the temperature reaches the insulation level of temperature, the PTC resistance increases, the high impedance state signals to the control protector, disconnect the motor circuit protector according to the signal and then protect the motor. We according to the DIN standard design and manufacture a series of bead insulation products which make high temperature protection achieve serialization. The product characteristic is small size of the chip, quickly response speed, long-term use of stable performance, high reliability. Especially protect the motor with rapid response when the motor default phase.

如图 1，在正常环境温度下，PTC 热敏电阻器阻值 R_p 小于 R_s ，输出电压较低，当环境温度超过设定温度时，PTC 热敏电阻器阻值 R_p 快速上升超过 R_s ，从而导致 V 增加到足够高的电压而动作（图 2）

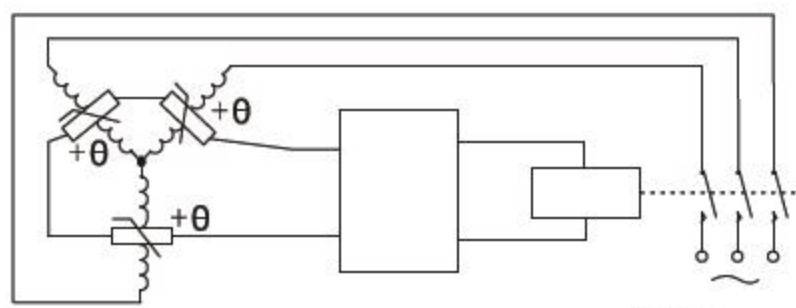
As in fig.1, in normal ambient temperature, PTC thermistor resistance $R_p < R_s$, lower output voltage. When ambient temperature exceeds setted temperature, PTC thermistor resistance R_p increases rapidly, and exceeds R_s , and leads V_o increases to high enough voltage, and cause tripping in fig.2



图Fig.1



图Fig.2



图Fig.3

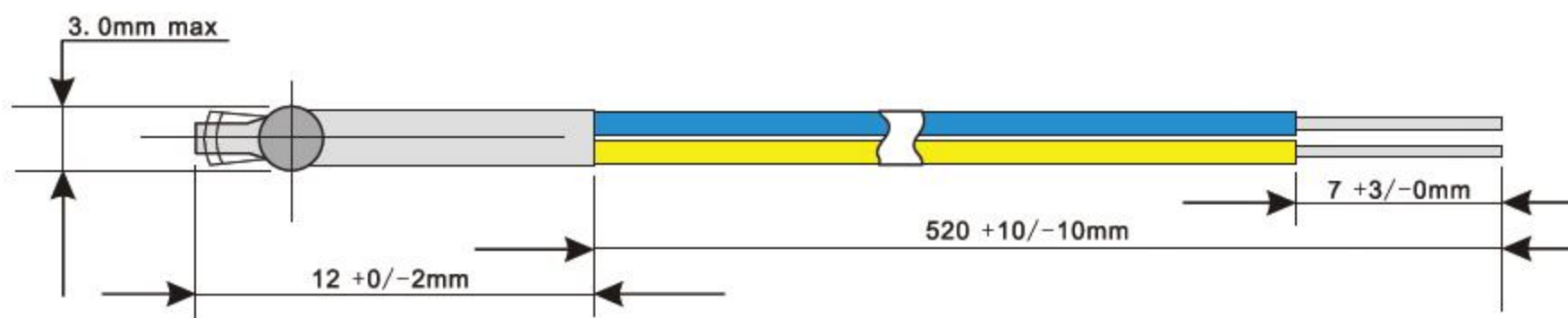
产品特点 PRODUCT FEATURES

1. 反应灵敏 fast response
2. 体积小 small size
3. 可靠性高 excellent reliability

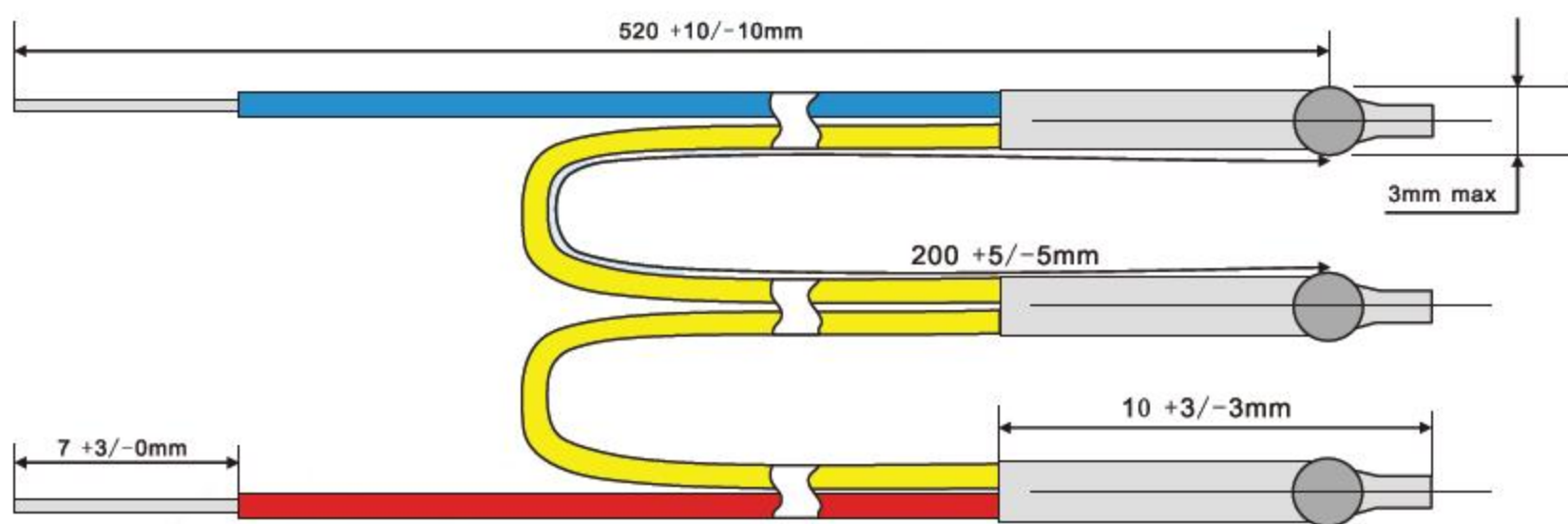
应用范围 APPLICATION

1. 电机马达 Motor
2. 电子线路 electronic circuit

产品外形结构图 OVERALL STRUCTURE



单芯PTC热敏电阻器（标准尺寸）
Single core thermistor (standard size)

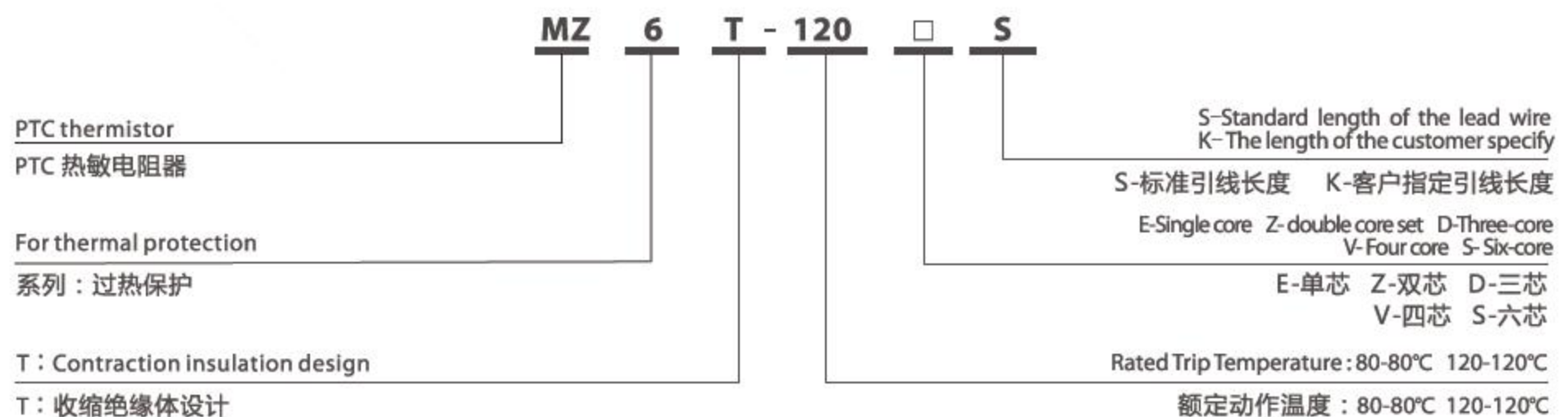


三芯PTC热敏电阻器（标准尺寸）
Three core thermistor (standard size)

技术参数 TECHNICAL PARAMETERS

	Single core PTC 单芯 PTC	Three-core PTC 三芯 PTC	Unit 单位
最大直流工作电压Umax The maximum DC operating voltage	30	30	V
正常使用电压 Normal operation voltage	≤2.5	≤2.5	V
额定动作温度 Ts Rated Trip Temperature	See the spec	See the spec	°C
Ts公差范围 Ts tolerance	±5	±5	°C
Ts重复性ΔT Ts repeatability	±0.5	±0.5	°C
R ₂₅ 电阻值 (V≤2.5V) R ₂₅ resistance	≤100	≤300	Ω
在Ts-5°C时温度阻值 Temperature resistance under Ts-5°C condition	≤550	≤1650	Ω
在Ts+5°C时温度阻值 Temperature resistance under Ts+5°C condition	≥1330	≥3990	Ω
在Ts+15°C时温度阻值 Temperature resistance under Ts+15 °C condition	≥4	≥12	KΩ
Ts动作时间 t Ts trip time	≤5	≤5	S
绝缘强度 V Insulation strength	2.5	2.5	KV
最大使用操作温度 The maximum operation temperature	200	200	°C
最高允许储存温度 The maximum allowable storage temperature	125	125	°C
最低允许储存温度 The minimum allowable storage temperature	-25	-25	°C
重量 Weight	2	3.5	g

产品型号说明 MARKING OF PART NUMBER



规格表 SPEC.Table

Part Number 型号	Rated trip temperature Ts (°C) 额定动作温度	Rated resistance R ₂₅ (Ω) 额定电阻值		Ts - 5°C (Ω)		Ts + 5°C (Ω)		Ts + 15°C (Ω)		颜色 Color
		Single core 单芯	Three-core 三芯	Single core 单芯	Three-core 三芯	Single core 单芯	Three-core 三芯	Single core 单芯	Three-core 三芯	
MZ6T-70□S	70	≤100	≤300	≤550	≤1650	≥1330	≥3990	≥4K	≥12K	白色/棕色 White/Brown
MZ6T-80□S	80	≤100	≤300	≤550	≤1650	≥1330	≥3990	≥4K	≥12K	白色/白色 White/White
MZ6T-90□S	90	≤100	≤300	≤550	≤1650	≥1330	≥3990	≥4K	≥12K	绿色/绿色 Green/Green
MZ6T-100□S	100	≤100	≤300	≤550	≤1650	≥1330	≥3990	≥4K	≥12K	红色/红色 Red/Red
MZ6T-110□S	110	≤100	≤300	≤550	≤1650	≥1330	≥3990	≥4K	≥12K	棕色/棕色 Brown/Brown
MZ6T-120□S	120	≤100	≤300	≤550	≤1650	≥1330	≥3990	≥4K	≥12K	灰色/灰色 Gray/Gray
MZ6T-130□S	130	≤100	≤300	≤550	≤1650	≥1330	≥3990	≥4K	≥12K	蓝色/蓝色 Blue/Blue
MZ6T-140□S	140	≤100	≤300	≤550	≤1650	≥1330	≥3990	≥4K	≥12K	白色/蓝色 White/Blue
MZ6T-150□S	150	≤100	≤300	≤550	≤1650	≥1330	≥3990	≥4K	≥12K	黑色/黑色 Black/Black
MZ6T-160□S	160	≤100	≤300	≤550	≤1650	≥1330	≥3990	≥4K	≥12K	蓝色/红色 Blue/Red
MZ6T-170□S	170	≤100	≤300	≤550	≤1650	≥1330	≥3990	≥4K	≥12K	白色/绿色 White/Green

订货信息填写 (注意: 多芯产品中间连接线使用黄色)

Order information (Remark: the connected wire color is yellow for multidiscs)

Part Number 型号	L1	L2	L3	L4
MZ6-150□K				

电机绝缘等级参考表

The motor insulation class reference sheet

Motor insulation class 电机绝缘等级	Working Temperature Limit 极限工作温度 (°C)	Refer to the thermistor 参考热敏电阻 (Ts)
Y	90	80-85°C
A	105	95-100°C
E	120	110-115°C
B	130	120-125°C
F	155	145-150°C
H	180	170-175°C

注: 第一个方框□注明引线长度类型。

Note: The first □ noted the leads length type.