



SPECIFICATION:

MAX. CURRENT/VOLTAGE RATING WITH RESISTIVE LOAD:

400mA 32VAC-100mA 50VDC-125mA 125VAC

500mA 48VAC - 200 mA 50VDC - 200mA 250VAC for metal material.

INITIAL CONTACT RESISTANCE: 50mΩ max.

INSULATION RESISTANCE: 1GΩ min.at 500VDC.

DIELECTRIC STRENGTH: 1,000 VAC rms.

1,500 VAC rms. for metal material.

ELECTRICAL LIFE AT FULL LOAD: 500,000 cycles.

OPERATING TEMPERATURE: -30°C to 85°C.

PANEL THICKNESS:

B1 series : 0.8 mm (.031) min. -1.8 mm (.071) max.

B2 series : 1.5 mm (.059) min. -4 mm (.157) max.

B3 series : 3.0±0.25 mm (.118)

TOTAL TRAVEL: 1.5 mm(.059)

OPERATING FORCE: 2N~5N

CONTACT BOUNCE: 10 ms.

MECHANICAL LIFE: 1,000,000 cycles.

TORQUE: 0.5 Nm max.applied to nut,

1.5 Nm max. for metal material.

SOLDERING: 350°C max.for 5 seconds.

MATERIALS

CASE: Diallyl phthalate (DAP)(UL94v-0).

CAP: Polyamide 6/6.

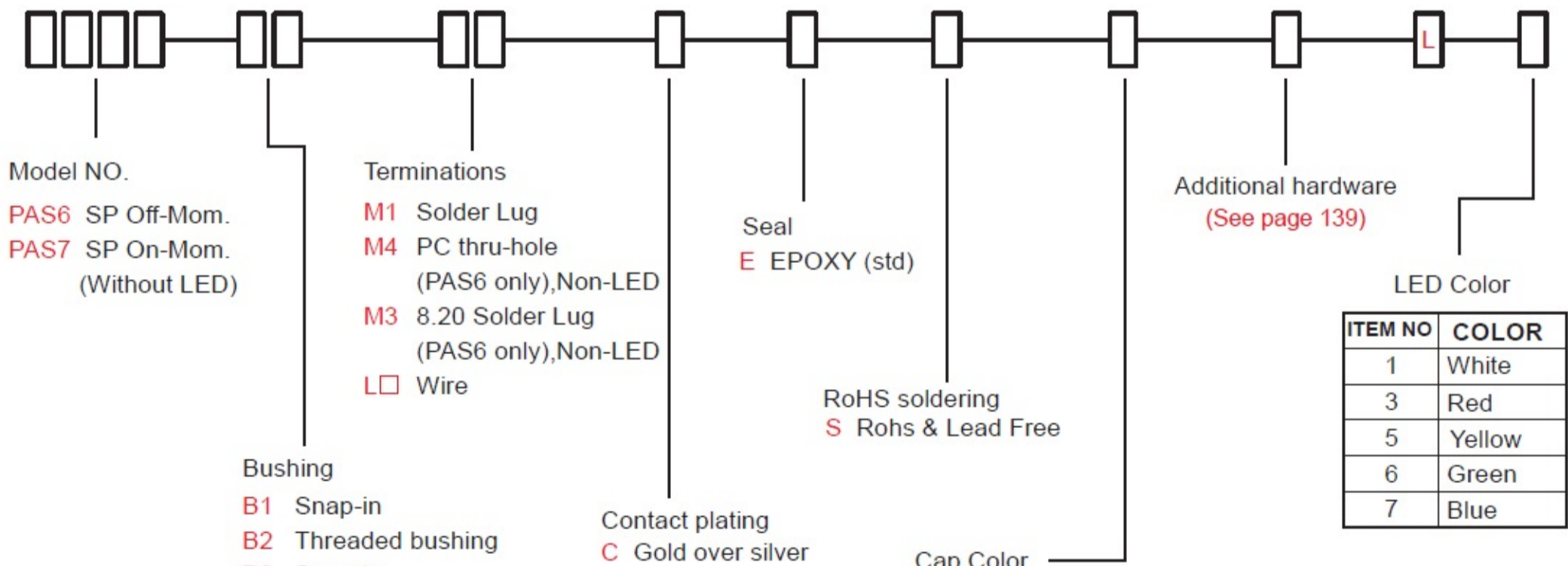
BUSHING: Polyamide 6/6.

IP 67
ACCORDING TO
EN 60529:1991+A1:2001
IEC 60529:2001



HOW TO ORDER

MODEL NO. BUSHING TERMINATIONS CONTACT PLATING SEAL RoHS SOLDERING CAP COLOR ADDITIONAL HARDWARE LED LED COLOR



Model NO.

PAS6 SP Off-Mom.
PAS7 SP On-Mom.
(Without LED)

Terminations

M1 Solder Lug
M4 PC thru-hole
(PAS6 only),Non-LED
M3 8.20 Solder Lug
(PAS6 only),Non-LED
L Wire

Bushing

B1 Snap-in
B2 Threaded bushing
B3 Snap-in
B6 Square threaded bushing
(plastic case)
D1 Square threaded bushing
(die-casting)
D2 Threaded bushing
(die-casting)

Bushing plated

A chromium
C Stain-chromium
D Stain-nickel plating

※If you need bushing plated see page 136.

Seal
E EPOXY (std)

RoHS soldering
S Rohs & Lead Free

Cap Color

* Please kindly note our standard is with flat cap.
* only flat cap available with LED.

CAP COLOR	ITEM NO.		
	Flat(std.)	Round	High
White	1	A1	G1
Black (Std)	2	A2	G2
Red (Std)	3	A3	G3
Orange	4	A4	G4
Yellow	5	A5	G5
Green	6	A6	G6
Blue	7	A7	G7

* Besides standard color, other colors need to check stocks available.



PA Series

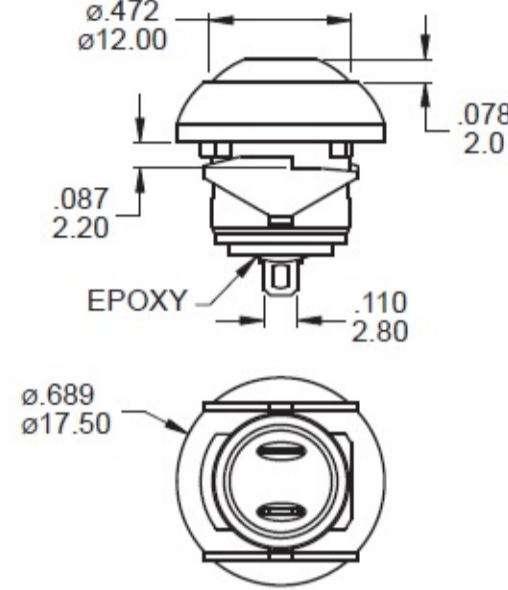
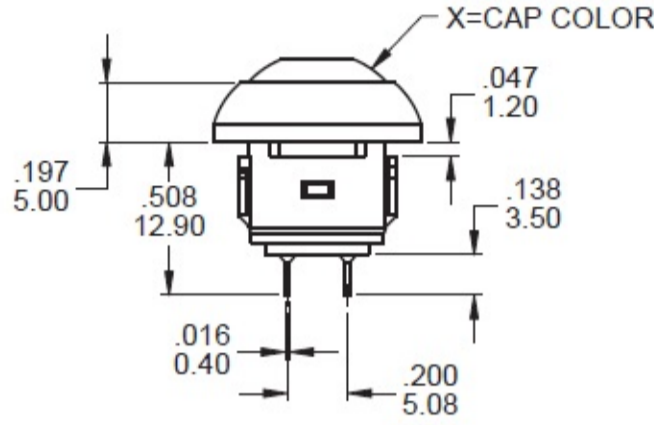
Sub-Miniature Pushbutton Switches

SWITCH FUNCTION

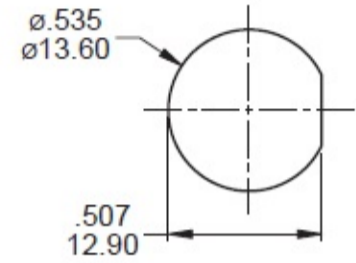
NO. POLES	MODEL NO.	SWITCH FUNCTION		CONNECTED TERMINALS		SCHEMATIC
		POS.1	POS.2	POS.1	POS.2	
SP	PAS6	OFF	MOM	OPEN	1-3	
SP	PAS7	ON	OFF(MOM)	1-3	OPEN	

MOM=MOMENTARY

B1



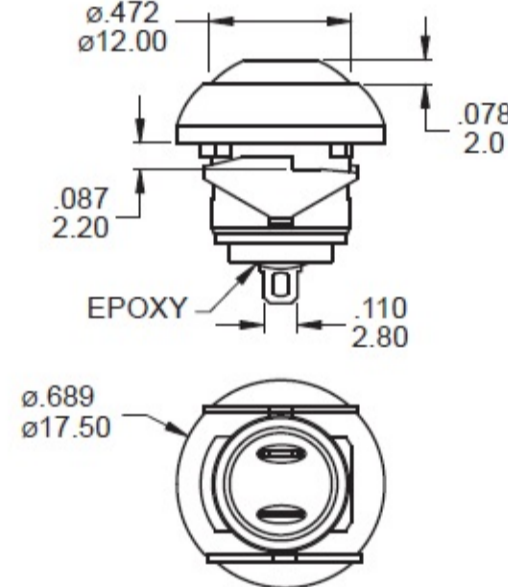
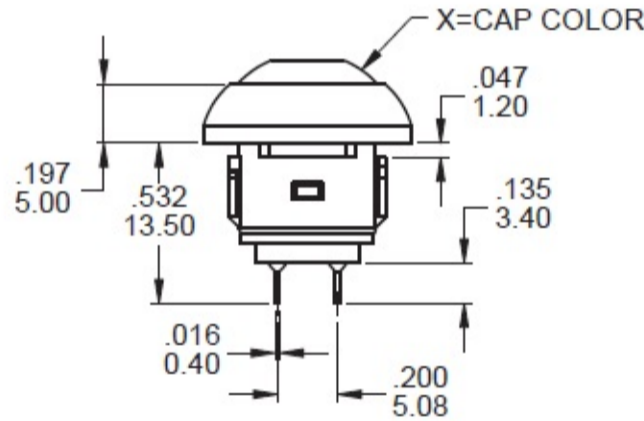
PANEL MOUNTING



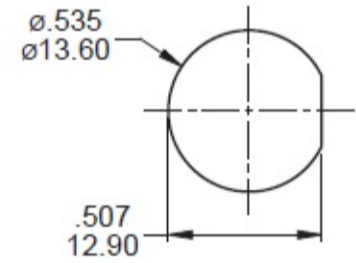
SPST

Part No. Shown : PAS6B1M1CESX-5

B1



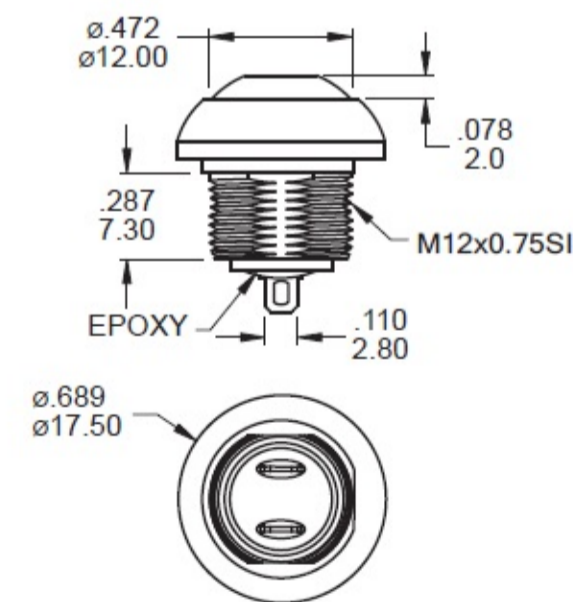
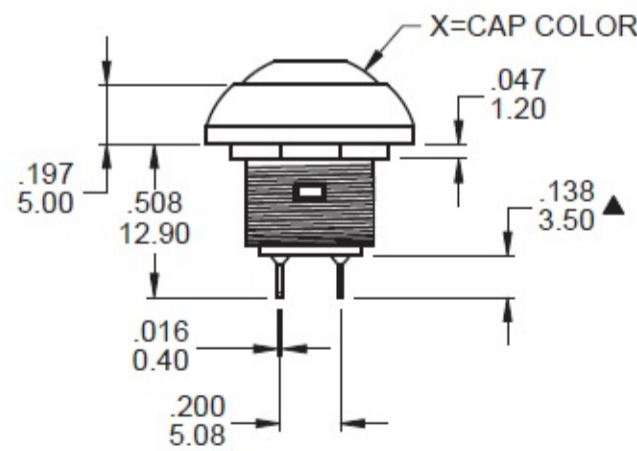
PANEL MOUNTING



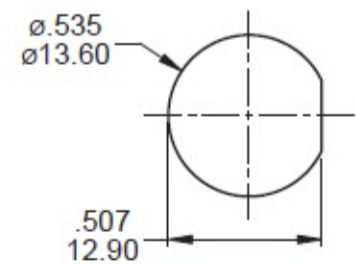
SPST

Part No. Shown : PAS7B1M1CESX-5

B2



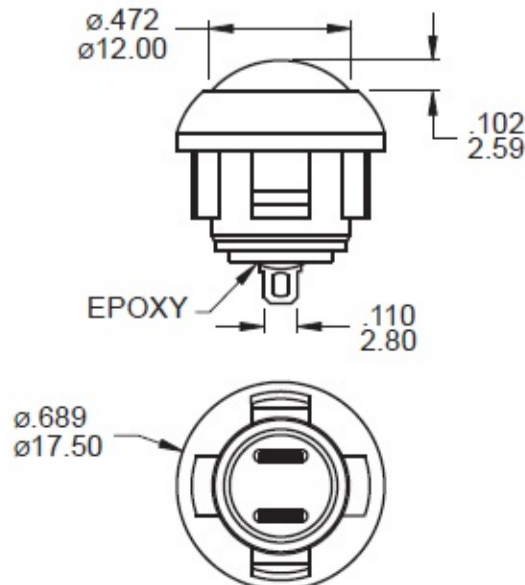
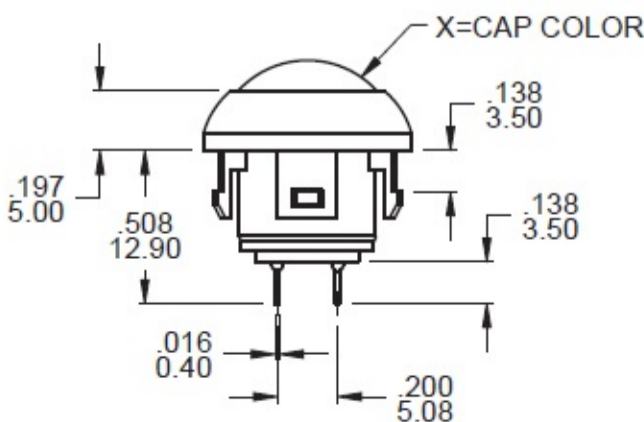
PANEL MOUNTING



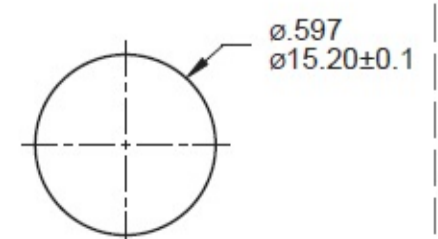
SPST

Part No. Shown : PAS6B2M1CESX-5

B3

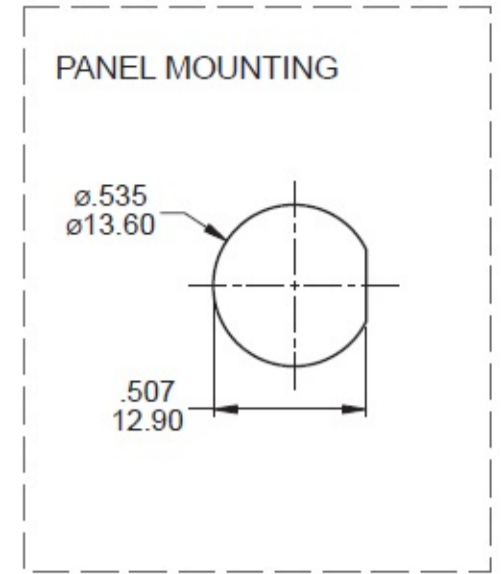
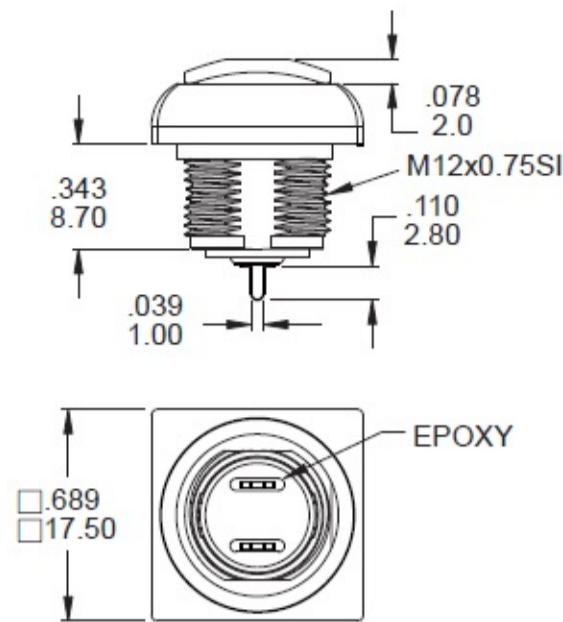
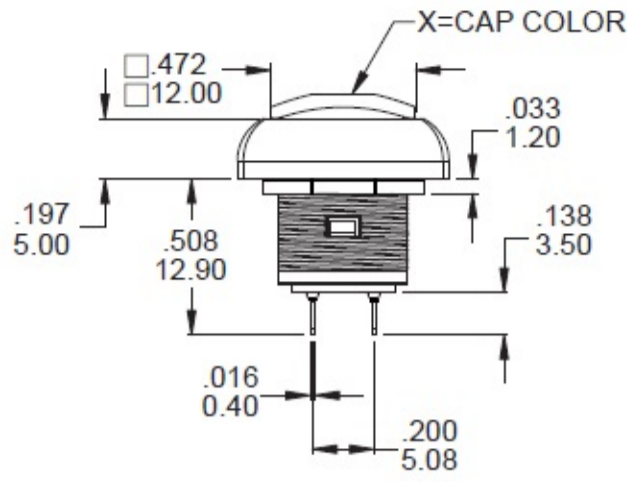


PANEL MOUNTING



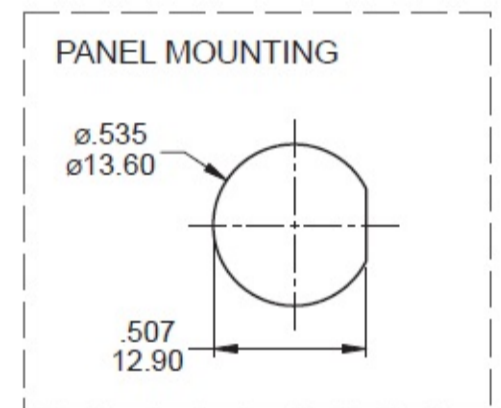
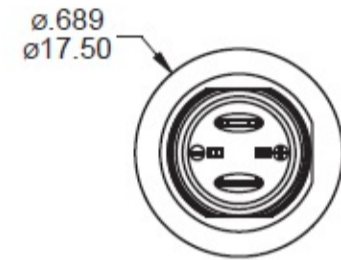
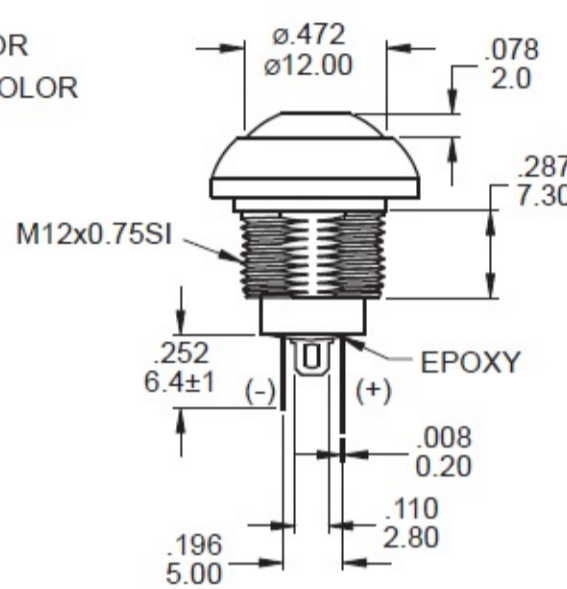
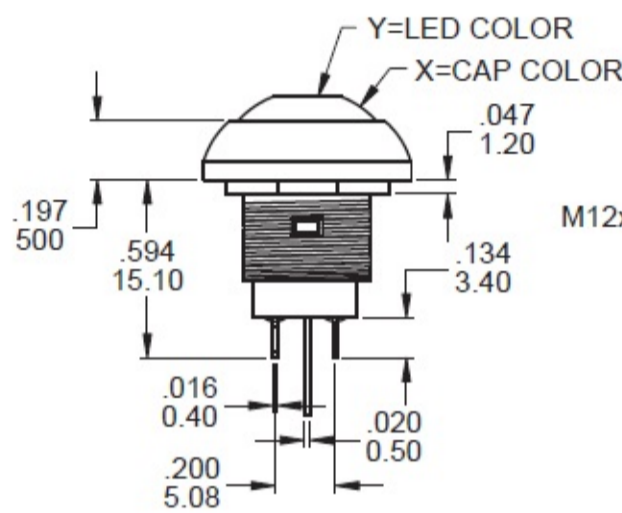
SPST

Part No. Shown : PAS6B3M1CESAX-5



SPST

Part No. Shown : PAS6B6M4CESX-5



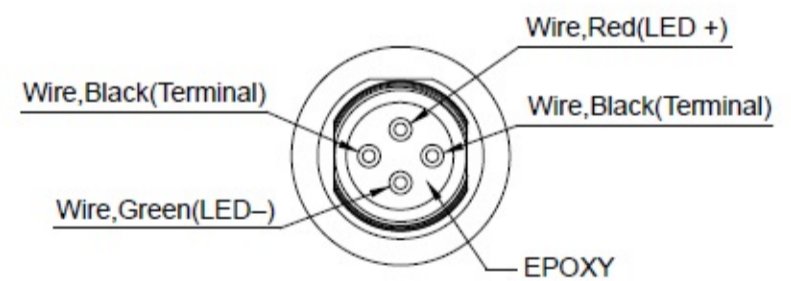
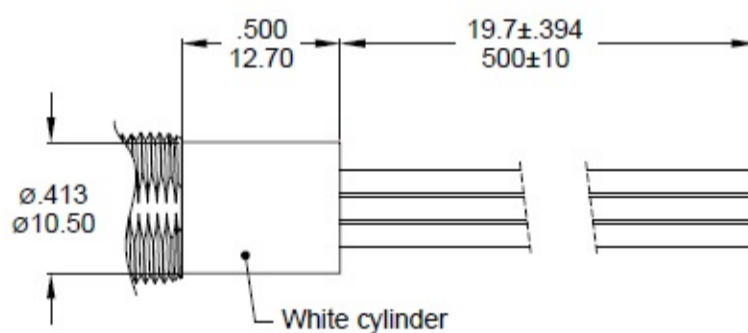
SPST

Part No. Shown : PAS6B2M1CESX-5LY

WIRE

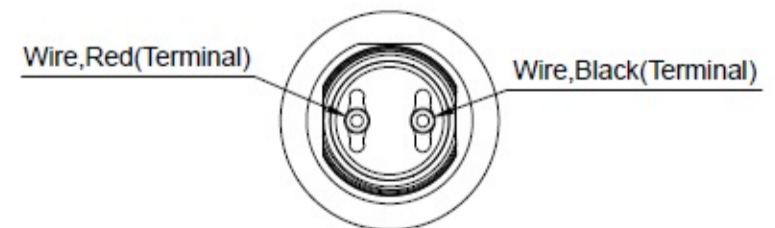
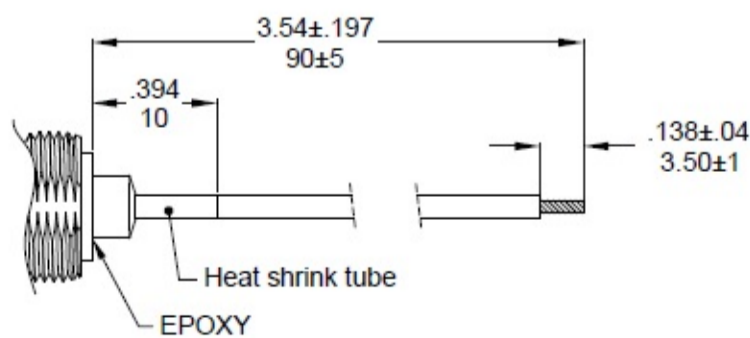
Note: When the switches with the wire assembly, we only test the electric conduction and will not test the contact resistance on the wire.

L1



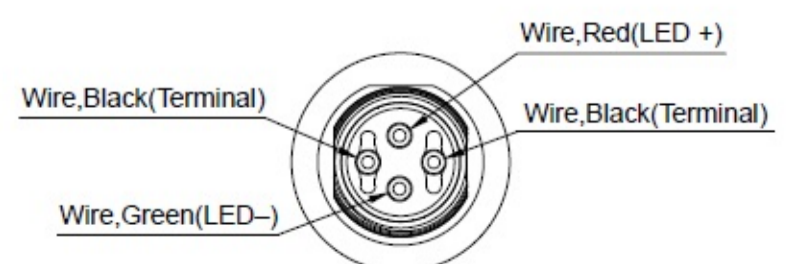
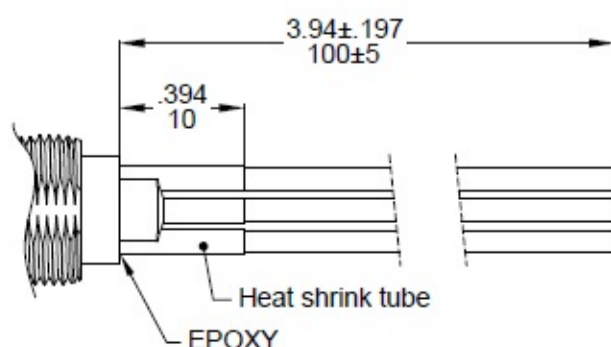
※ Multi-wire lead AWG20, section 0.6mm², UL approved. (Black / Green / Red)

L2



※ Multi-wire lead AWG20, section 0.6mm², UL approved. (Black / Red)

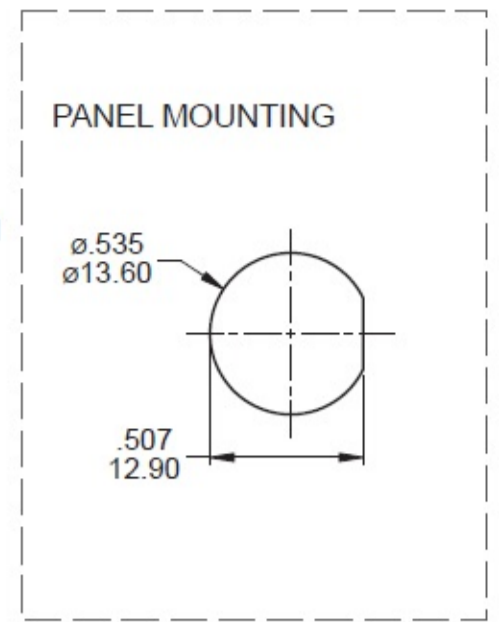
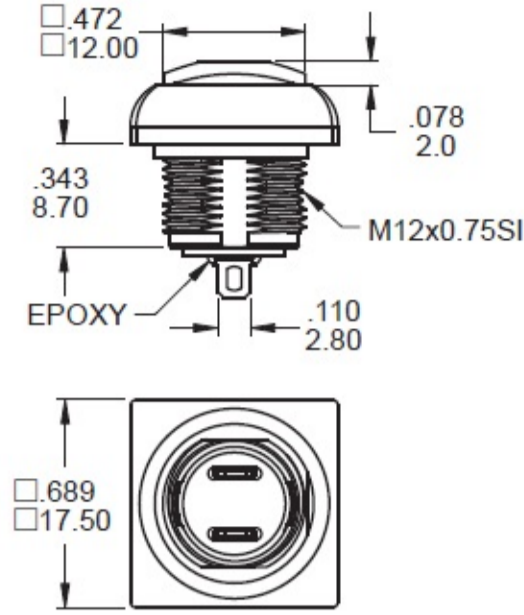
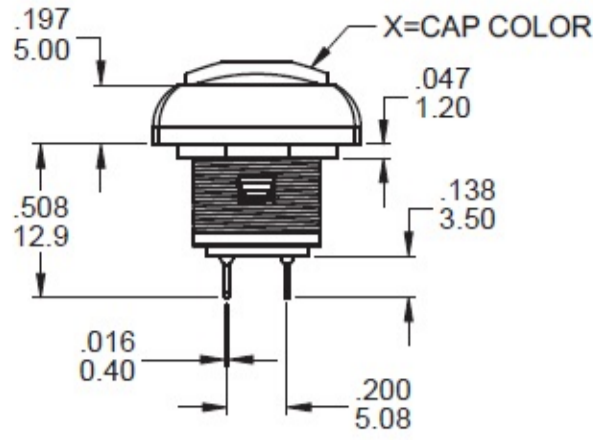
L3



※ Multi-wire lead AWG20, section 0.6mm², UL approved. (Black / Green / Red)

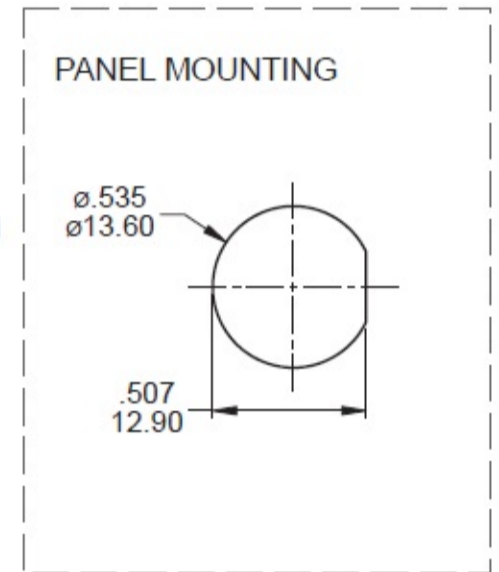
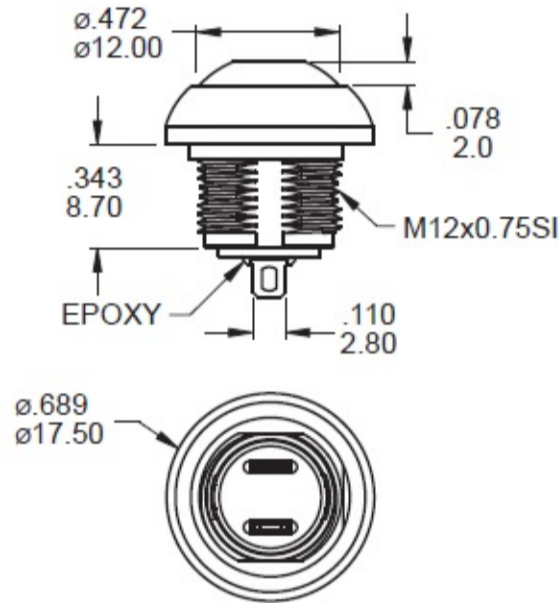
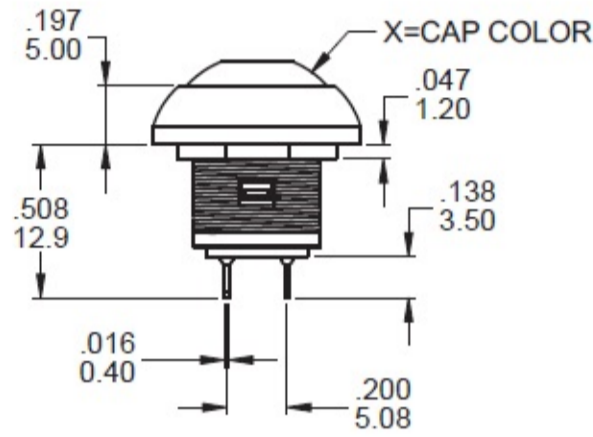
PA Series

Sub-Miniature Pushbutton Switches



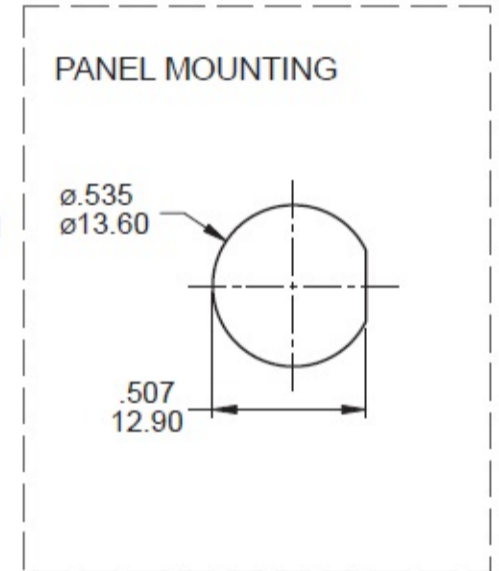
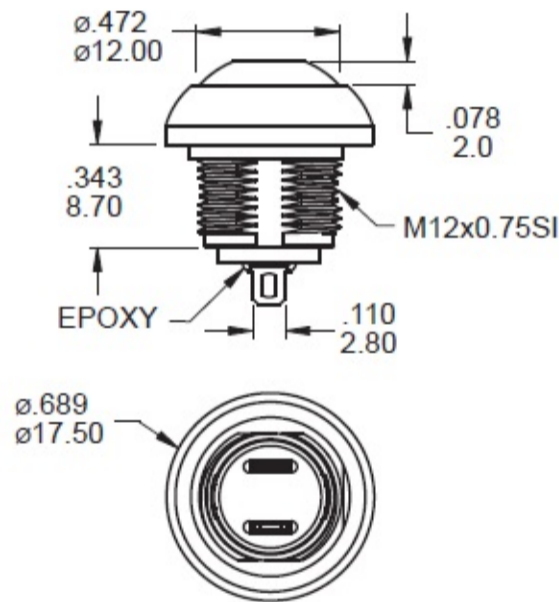
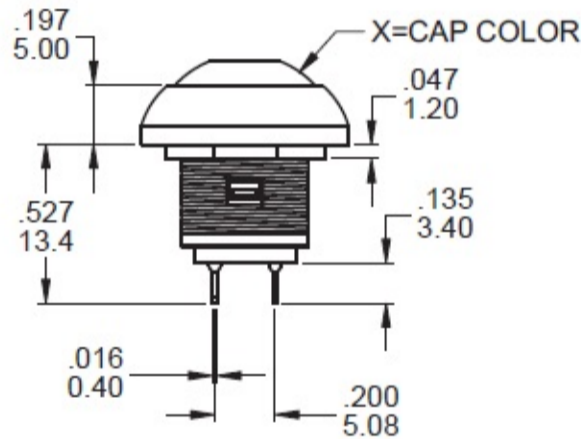
SPST

Part No. Shown : PAS6D1M1CESX-5



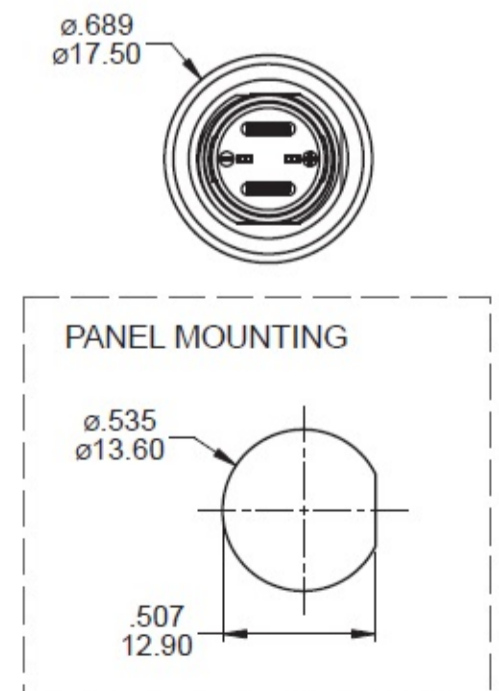
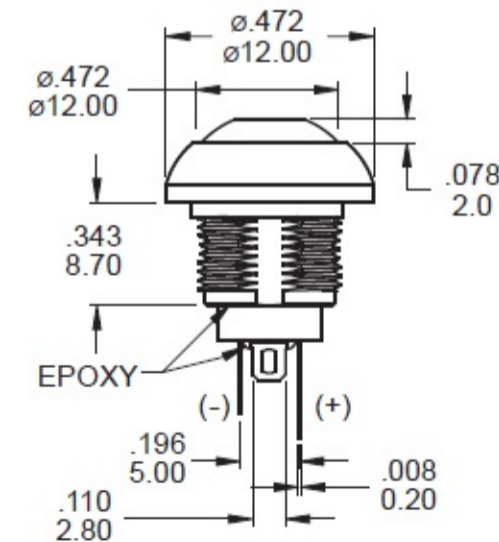
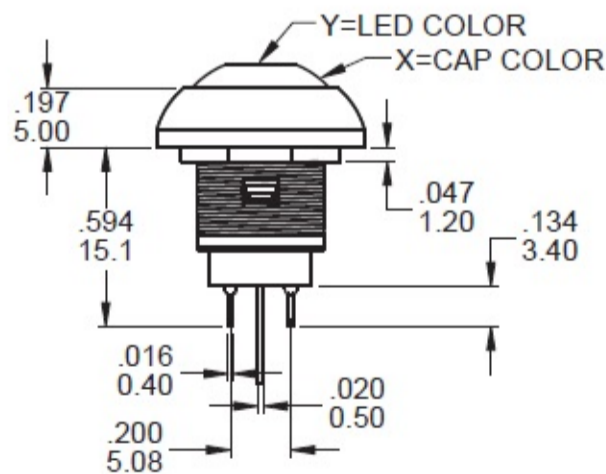
SPST

Part No. Shown : PAS6D2M1CESX-5



SPST

Part No. Shown : PAS7D2M1CESX-5



SPST

Part No. Shown : PAS6D2M1CESX-5LY

BUSHING PLATING



- PLATING
- A Chromium
 - C Stain-chromium
 - D Stain-nickel



Chromium



Stain-chromium



Stain-nickel



IP 67
ACCORDING TO
EN 60529:1991+A1:2001
IEC 60529:2001



SPECIFICATION:

MAX. CURRENT/VOLTAGE RATING WITH RESISTIVE LOAD:

100mA 24VDC-life expectancy 200,000 cycles
2A 125VAC-life expectancy 10,000 cycles

INITIAL CONTACT RESISTANCE: 50mΩ max.

INSULATION RESISTANCE: 1GΩ min.at 500VDC.

DIELECTRIC STRENGTH: 1,000 VAC rms.

ELECTRICAL LIFE AT FULL LOAD: 200,000 cycles.

OPERATING TEMPERATURE: -30°C to 85°C.

PANEL THICKNESS: 1.5 mm (.059) min. -4 mm (.157) max.

TOTAL TRAVEL: 2.5 mm(.098)

OPERATING FORCE: 2N~5N

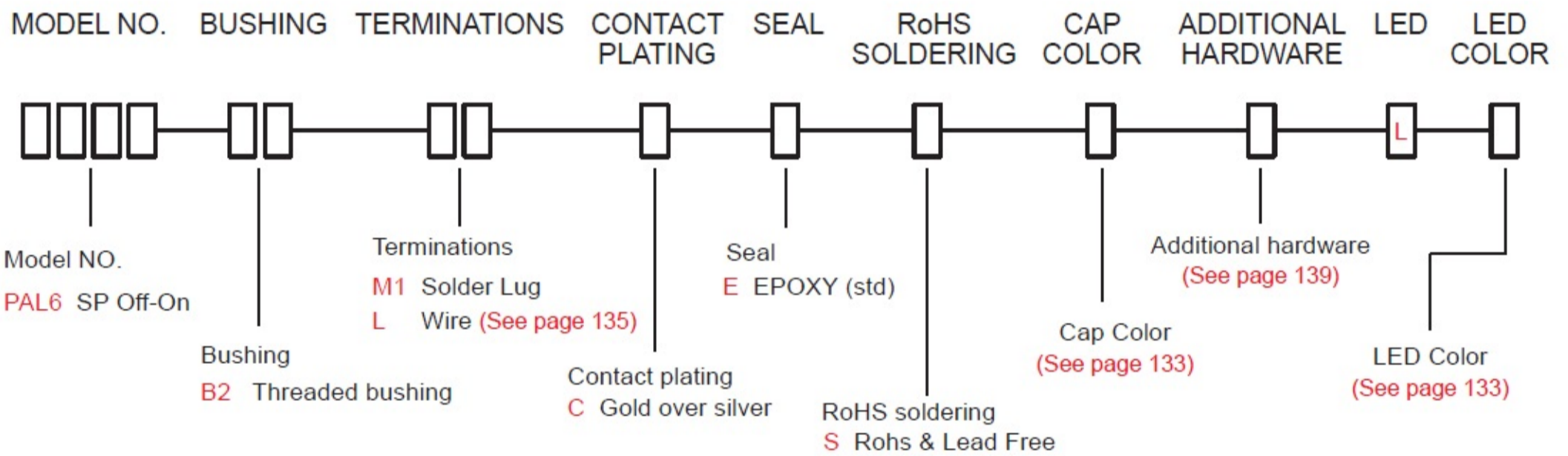
CONTACT BOUNCE: 10 ms.

MECHANICAL LIFE: 1,000,000 cycles.

TORQUE: 0.5 Nm max.applied to nut

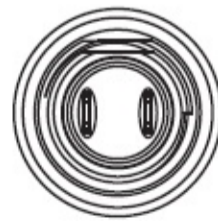
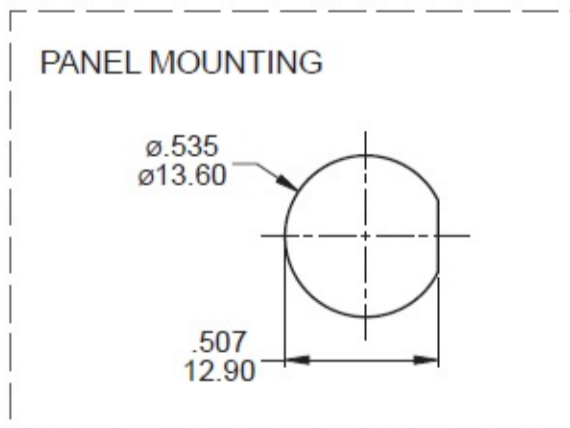
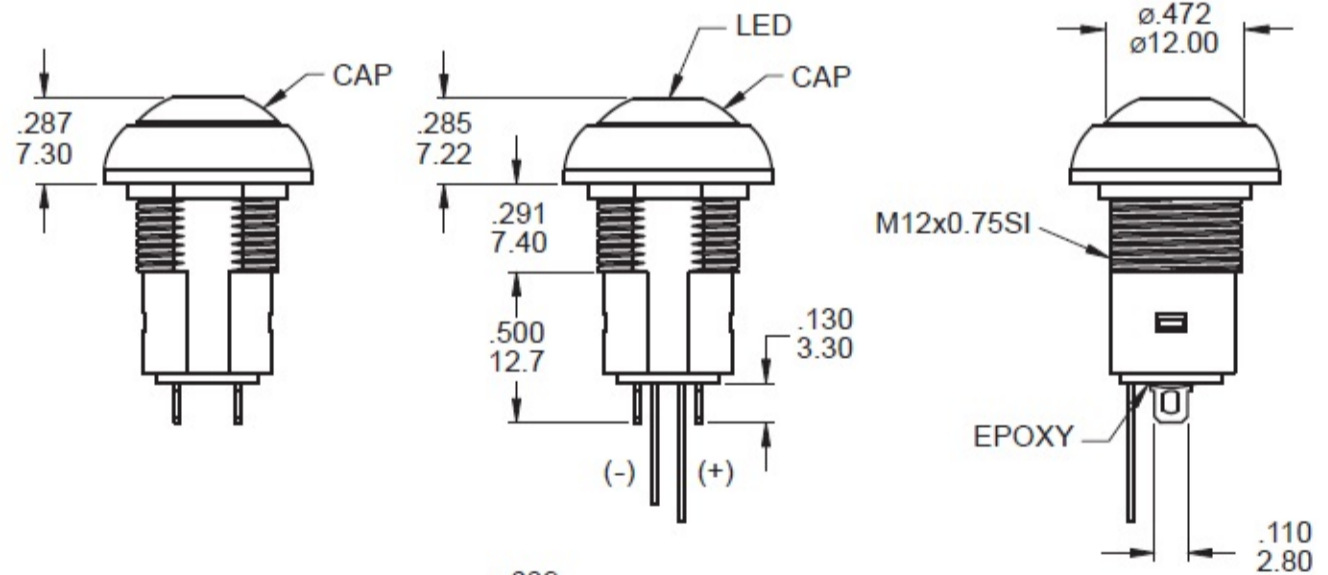
SOLDERING: 350°C max.for 5 seconds.

HOW TO ORDER

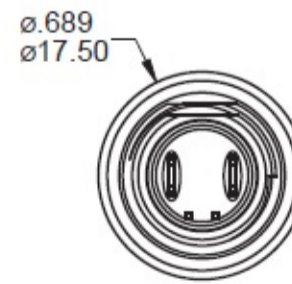


SWITCH FUNCTION

MODEL NO.	POS.1	POS.2
PAL6	OFF	ON
TERM. COMM.	OPEN	1-3
SCHEMATIC		



Non-LED

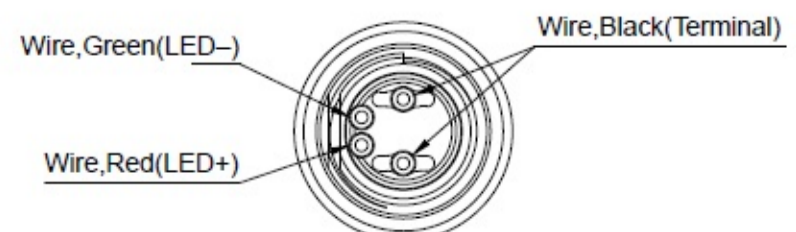
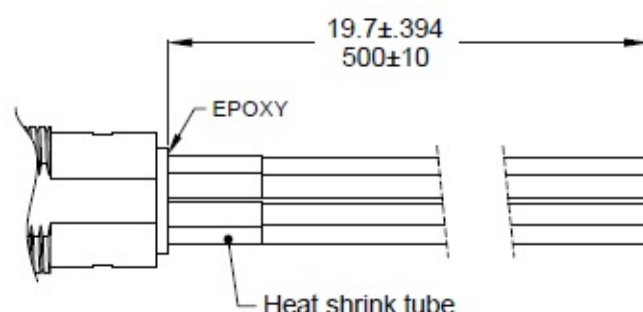


LED

ADDITIONAL HARDWARE

- 1.M12 X 0.75 NUTS (MNU- PA03)
- 2.LOCKING WASHER (MNU-1M09)
- 3.O-RING (FCP-A253)

L1

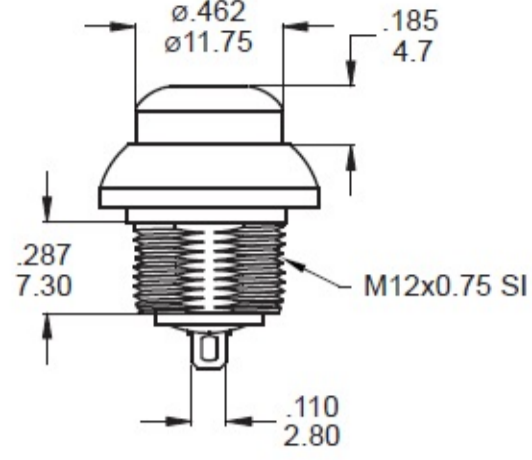
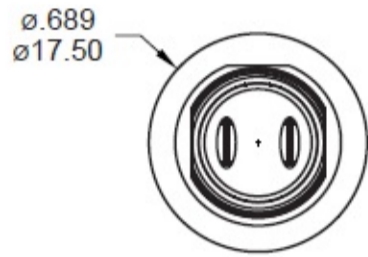
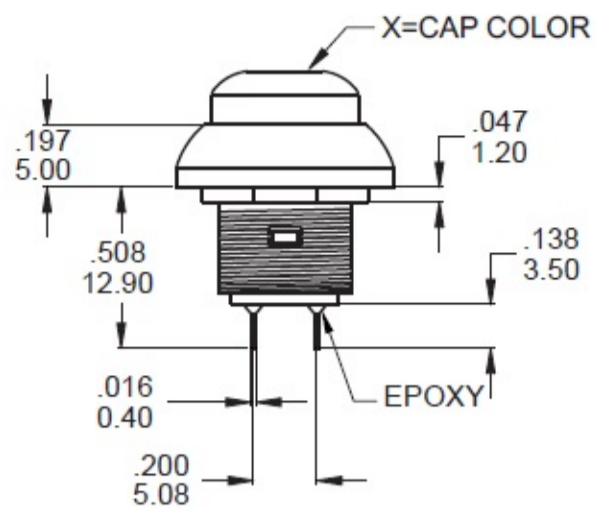


※ Multi-wire lead AWG20,section 0.6mm²,UL approved.
(Black / Green / Red)

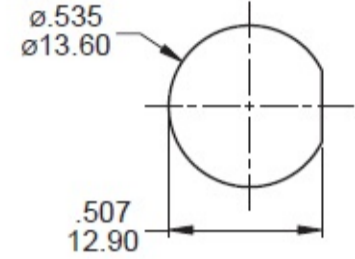
PA Series

Sub-Miniature Pushbutton Switches

B2



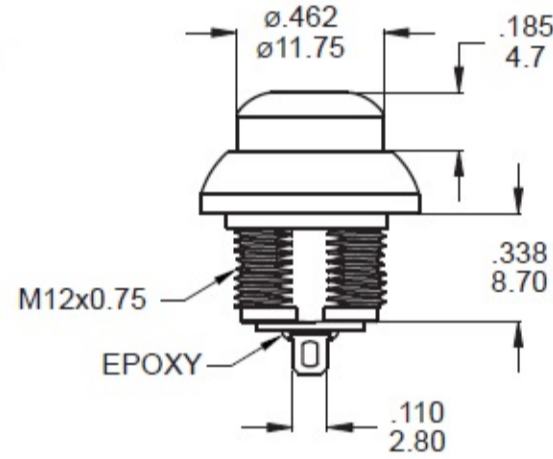
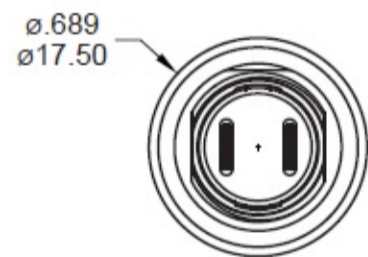
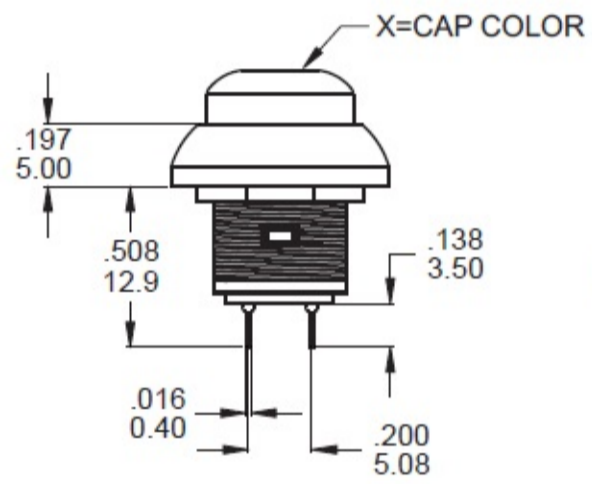
PANEL MOUNTING



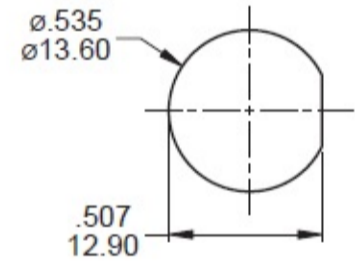
SPST

Part No. Shown : PAS6B2M1CESGX-5

D2



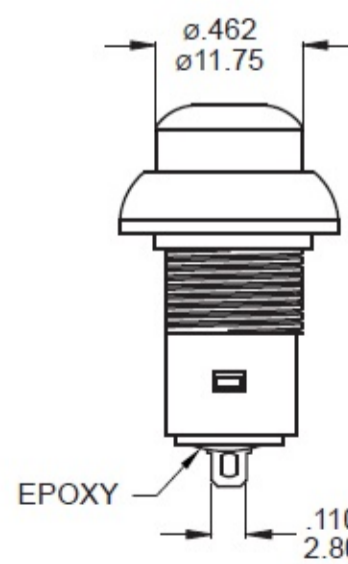
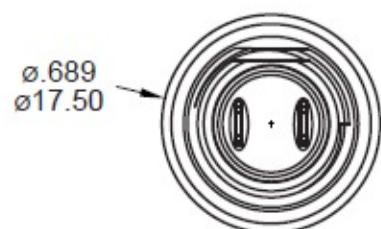
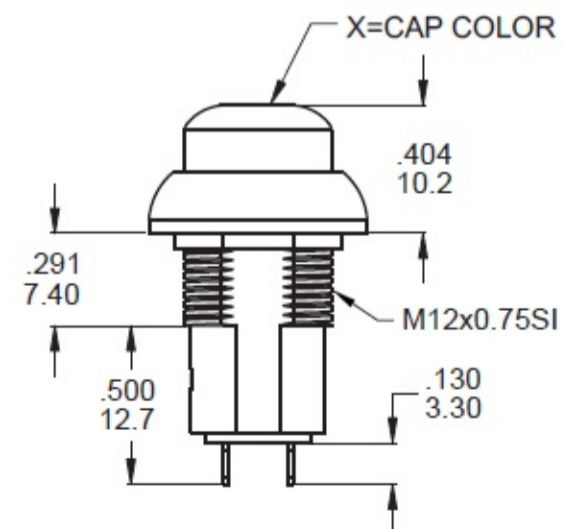
PANEL MOUNTING



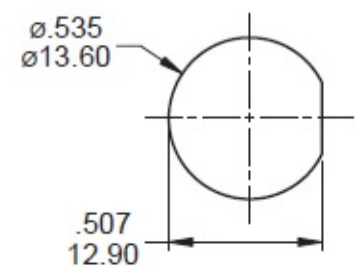
SPST

Part No. Shown : PAS6D2M1CESGX-5

B2



PANEL MOUNTING

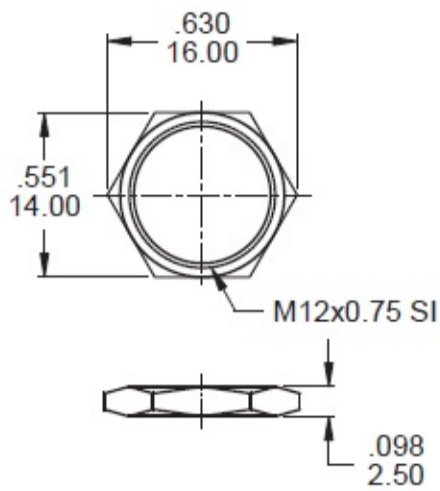


SPST

Part No. Shown : PAL6B2M1CESGX-5

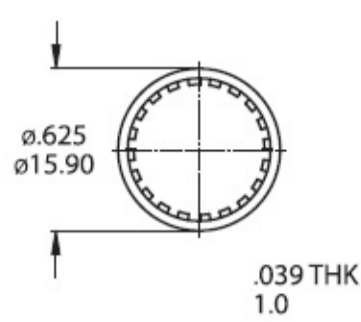
HARDWARE

M12 NUT



MNU-PA03

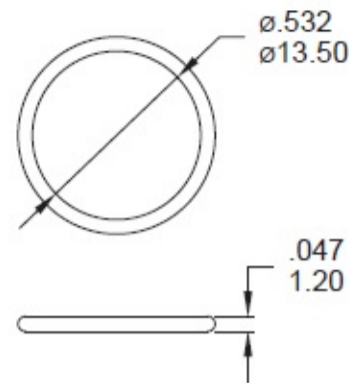
LOCK WASHER



MNU-1M09

Supplied with B2 / D1 / D2 bushing

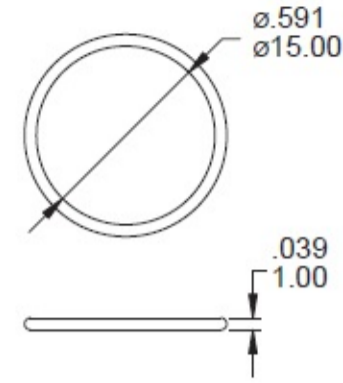
O-RING



FCP-A253

Supplied with PAL6 and D1 / D2 options

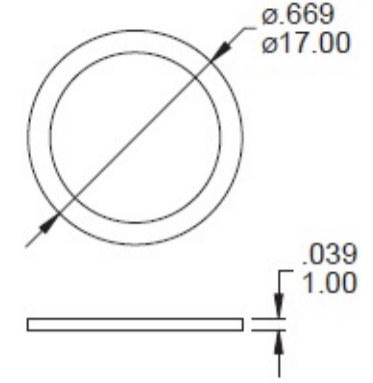
O-RING



MCP-P004

Supplied standard with B3 options

EVA WASHER



FSU-PA01

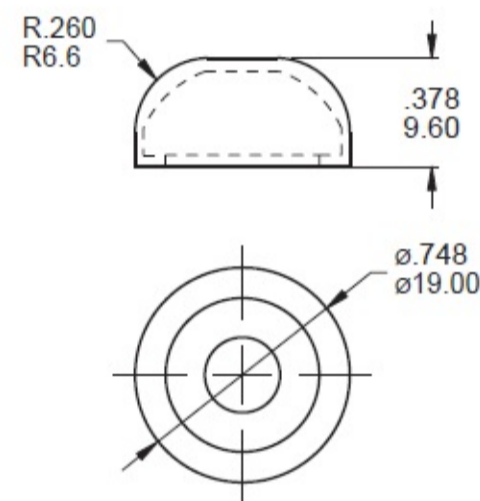
Supplied standard with B1 / B2 options

RUBBER - HOOD

MCP-P003 (Transparent cap)



MCP-P003-2 (Black cap)



SOLDERING PROCESSES

MANUAL SOLDERING: Use soldering iron of 30 watts, controlled at 350°C approximately 5 seconds while applying solder.

WAVE SOLDERING:

Recommended Soldering Temperature: 260 ± 5°C

Duration of Solder Immersion: Max 5 sec.

(PCB is 1.6mm in thickness)

IP 67 for the whole series:
Protected against the effects of immersion up to 1 m water(30mn)

