

Sub-Miniature Pushbutton Switches P series



SPECIFICATION:

MAX. CURRENT/VOLTAGE RATING WITH RESISTIVE LOAD:

PA S6/S7	400mA 32VAC-100mA 50VDC-125mA 125VAC 500mA 48VAC - 200 mA 50VDC - 200mA 250VAC.for metal material.
PA L6	100mA 24VDC-life expectancy 200,000 cycles 2A 125VAC-life expectancy 10,000 cycles

INITIAL CONTACT RESISTANCE: 50mΩ max.

INSULATION RESISTANCE: 1GΩ min.at 500VDC.

DIELECTRIC STRENGTH: 1,000 VAC rms.
1,500 VAC rms. for metal material.

ELECTRICAL LIFE AT FULL LOAD:

PA S6/S7	500,000 cycles.
PA L6	200,000 cycles.

OPERATING TEMPERATURE: -30°C to 85°C.

PANEL THICKNESS:

B1 series : 0.8 mm (.031) min. -1.8 mm (.071) max.

B2 series : 1.5 mm (.059) min. -4 mm (.157) max.

B3 series : 3.0±0.25 mm (.118)

TOTAL TRAVEL:

PA S6/S7	1.5 mm(.059)
PA L6	2.5 mm(.098)

OPERATING FORCE: 2N~5N

CONTACT BOUNCE: 10 ms.

MECHANICAL LIFE: 1,000,000 cycles.

TORQUE: 0.5 Nm max.applied to nut,
1.5 Nm max. for metal material.

SOLDERING: 350°C max.for 5 seconds.

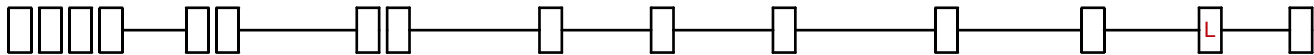


IP 67
ACCORDING TO
EN 60529 IEC 60332-1 IEC 60332-2



HOW TO ORDER

MODEL NO. BUSHING TERMINATIONS CONTACT MATERIAL SEAL ROHS SOLDERING CAP COLOR ADDITIONAL HARDWARE LED LED COLOR



MODEL NO.
PAS6 SP Off-Mom
PAS7 DP On-Mom
(Without LED)

TERMINATIONS
M1 Solder Lug
L1 Wire

BUSHING
B1 Snap-in
B2 Threaded bushing
B3 Snap-in
D1 Square Threaded bushing
(die-casting)
D2 Threaded bushing
(die-casting)

SEAL
E EPOXY (std)
A Sealed

ROHS SOLDERING
S Rohs & Lead Free
F Halogen Free+RoHS

CONTACT MATERIAL
C Gold over silver

ADDITIONAL HARDWARE
(See page 116)

LED COLOR
(See page 116)

ITEM NO	COLOR
1	White
3	Red
5	Yellow
6	Green
7	Blue

CAP COLOR

ITEM NO	COLOR
1	White
2	Black
3	Red
4	Orange
5	Yellow
6	Green
7	Blue

PAL6 SP Off-On **B2** Threaded bushing

▲ Please kindly note our standard is with flat cap.
If you need round cap, please add "A" before cap color option.

Pushbutton Switches

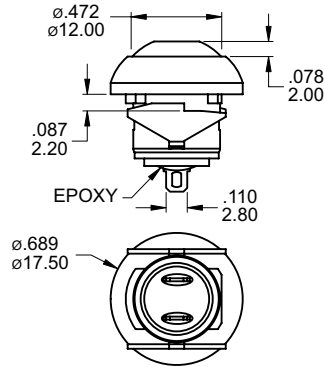
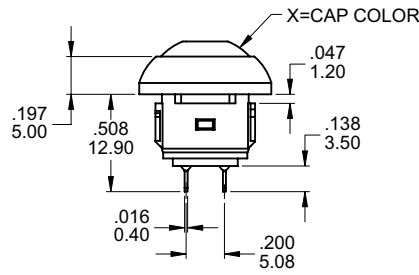
Sub-Miniature Pushbutton Switches P Series

SWITCH FUNCTION

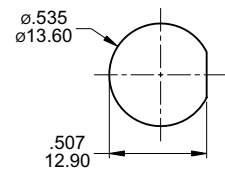
NO. POLES	MODEL NO.	SWITCH FUNCTION		CONNECTED TERMINALS		SCHEMATIC
		POS.1	POS.2	POS.1	POS.2	
SP	PAS6	OFF	MOM	OPEN	1-3	
SP	PAS7	ON	OFF(MOM)	1-3	OPEN	
SP	PAL6	OFF	ON	OPEN	1-3	

MOM=MOMENTARY

B1



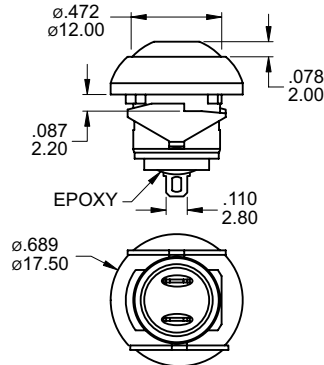
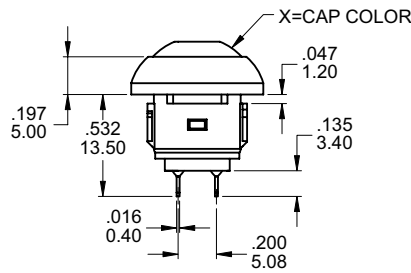
PANEL MOUNTING



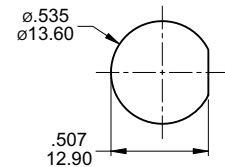
SPDT

Part No. Shown : PAS6B1M1CESX-5

B1



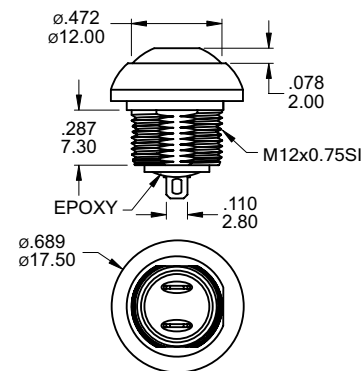
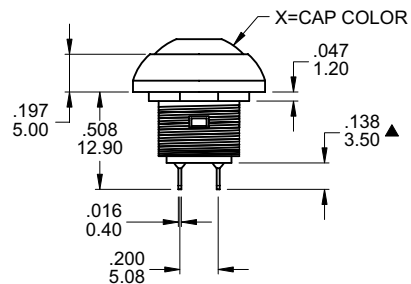
PANEL MOUNTING



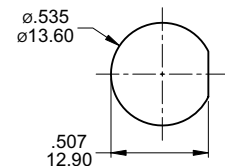
SPDT

Part No. Shown : PAS7B1M1CESX-5

B2



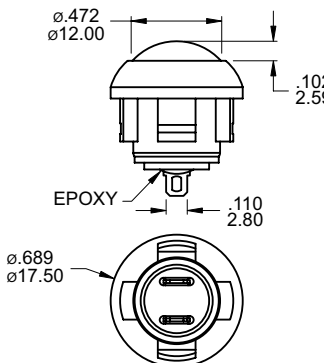
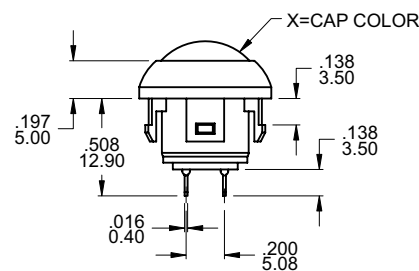
PANEL MOUNTING



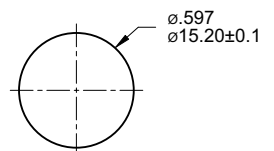
SPDT

Part No. Shown : PAS6B2M1CESX-5

B3



PANEL MOUNTING



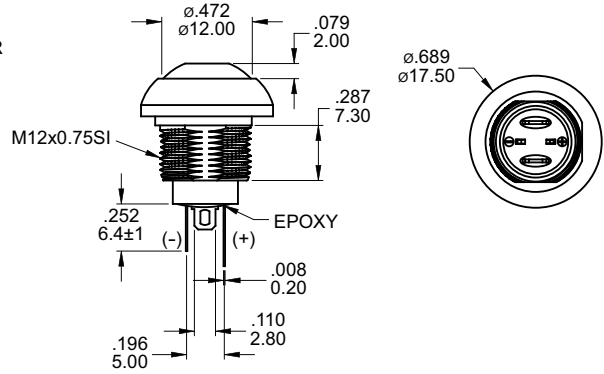
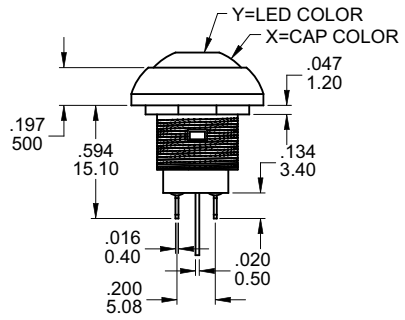
SPDT

Part No. Shown : PAS6B3M1CESAX-5

Sub-Miniature Pushbutton Switches P Series



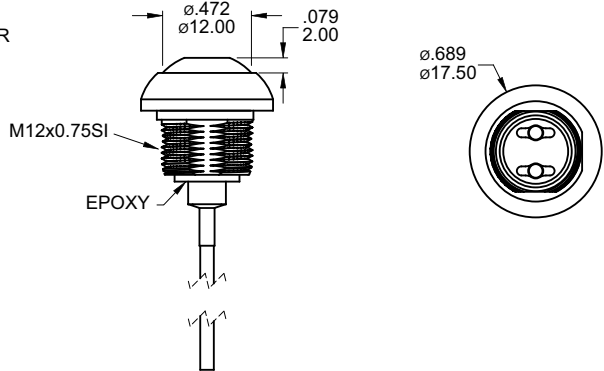
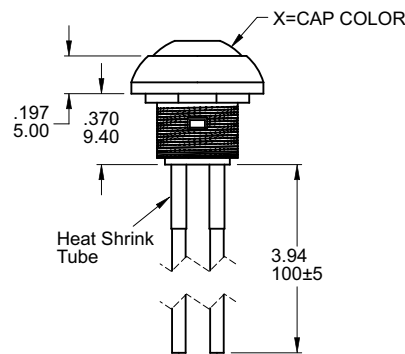
SPDT



Part No. Shown : PAS6B2M1CESX-5LY



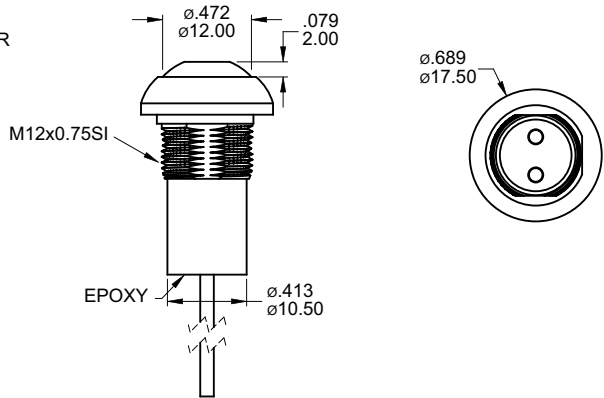
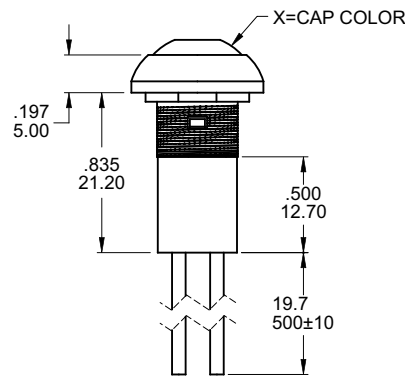
SPDT



Part No. Shown : PAS6B2L3CESX-5



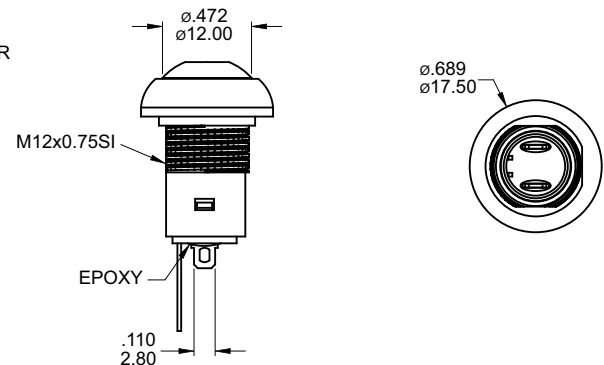
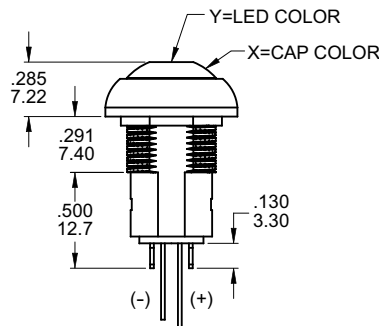
SPDT



Part No. Shown : PAS6L1CASX-5



SPDT



Part No. Shown : PAL6B2M1CESX-5LY

Pushbutton Switches

Sub-Miniature Pushbutton Switches P Series

BUSHING PLATING



PLATING

- A Chromium
- B Tin-nickel Alloy
- C Stain-chromium
- D Stain-nickel



Chromium



Tin-nickel Alloy



Stain-chromium

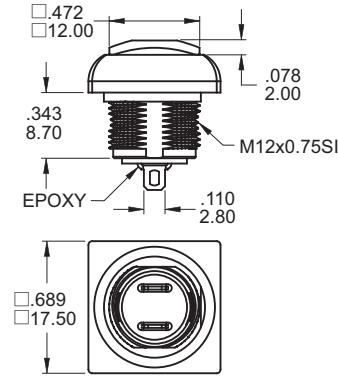
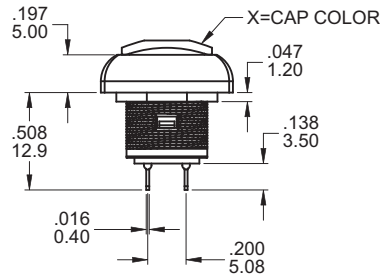


Stain-nickel

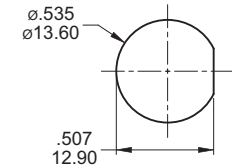


SPDT

Part No. Shown : PAS6D1M1CESX-5

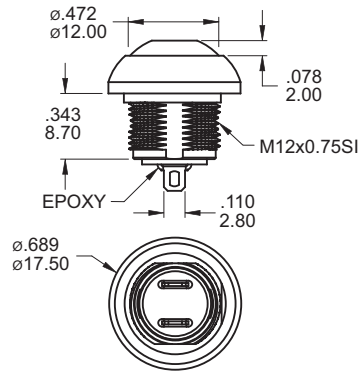
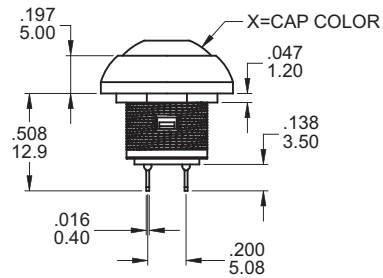


PANEL MOUNTING

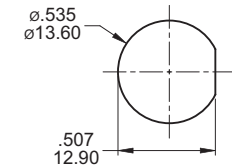


SPDT

Part No. Shown : PAS6D2M1CESX-5

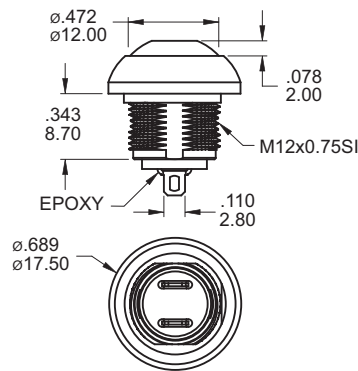
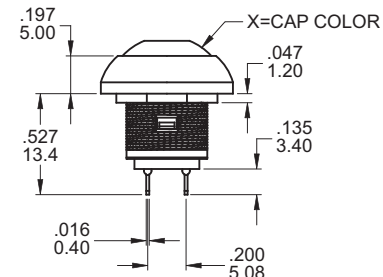


PANEL MOUNTING

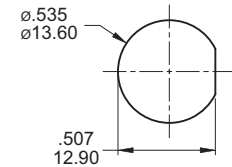


SPDT

Part No. Shown : PAS7D2M1CESX-5

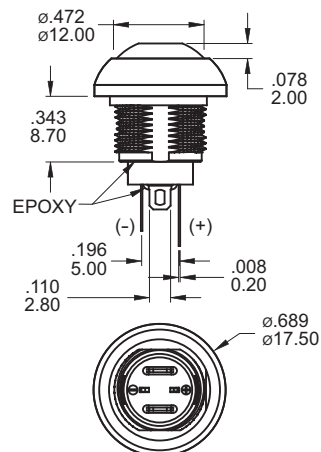
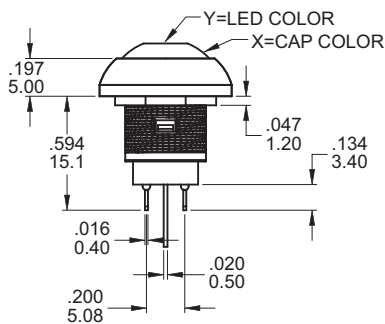


PANEL MOUNTING

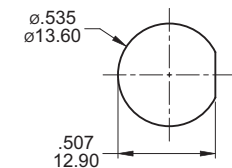


SPDT

Part No. Shown : PAS6D2M1CESX-5LY



PANEL MOUNTING

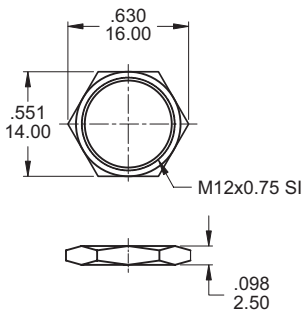


Pushbutton Switches

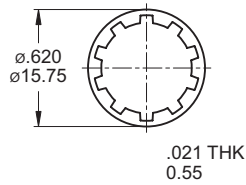
Sub-Miniature Pushbutton Switches P Series

HARDWARE

M12 NUT

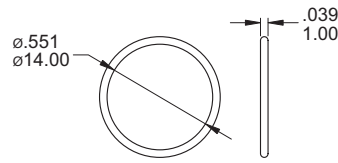


LOCK WASHER HDW12



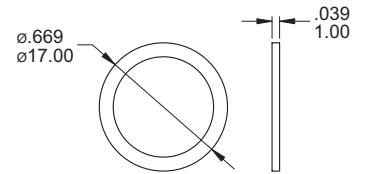
Supplied with B2 / D1 / D2 bushing

O-RING



Supplied with PAL6 and D1,D2 options

RUBBER WASHER

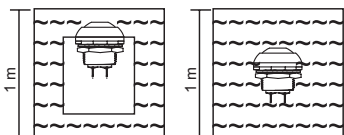


Supplied standard with B1 / B3 options

WITH LED ELECTRO-OPTICAL DATA

Model No.	Lens Appearance	Color	Electro-optical Data (AT 20mA)				Peak Wavelength	Viewing Angle 2θ 1/2 (deg)	
			Vf (V)		Iv (mcd)				
			Typ.	Max.	Typ.	Max.			
PAS6 & PAS7	Water Clear	White (AT 5mA)	3.2	3.6	250	94	X=0.28 Y=0.29	35°	
		Super Red	1.7	2.6	60	28	660		
		Super Yellow	2.1	2.6	200	94	590		
		Super Green	2.0	2.6	100	42	570		
		Super Blue	3.2	3.6	150	63	470		
		Super Yellow (Super Green)	Y	2.1	2.6	200	94		590
			G	2.0	2.6	80	42		570
		Super Yellow (Super Blue)	Y	2.1	2.6	200	94		590
			B	3.2	3.6	200	94		460
		Super Yellow (Super Red)	Y	2.1	2.6	100	63		590
			R	2	2.6	90	42		630
		Super Red (Super Green)	R	2	2.6	90	42		630
			G	2.0	2.6	90	42		570
		Super Red (Super Blue)	R	2	2.6	90	42		630
	B	3.2	3.6	200	94	460			
Super Green (Super Blue)	G	2.0	2.6	100	42	570			
	B	3.2	3.6	200	94	460			
PAL6	Water Clear	White	3.5	4.0	370	—	X=0.32 Y=0.31	80°	
		Super Red	2.0	2.6	85	—	625		
		Super Yellow	2.1	2.6	80	—	590		
		Super Green	2.0	2.6	30	—	575		
		Super Blue	3.5	4	250	—	470		
		Super Yellow (Super Green)	Y	2.0	2.6	40	—	590	
			G	2.0	2.6	20	—	570	
		Super Yellow (Super Red)	Y	2.0	2.6	35	—	590	
			R	2.0	2.6	40	—	625	
		Super Red (Super Green)	R	2.0	2.6	50	—	625	
			G	2.0	2.6	13	—	570	

IP 67 for the whole series:
Protected against the effects of immersion up to 1 m water(30mn)



SOLDERING PROCESSES

MANUAL SOLDERING : Use soldering iron of 30 watts, controlled at 350°C approximately 5 seconds while applying solder.

WAVE SOLDERING : Recommended Soldering Temperature : 260 ± 5°C
Duration of Solder Immersion : Max 5 sec.
(PCB is 1.6mm in thickness)

SOLDERING : Vapor phase