



SPECIFICATION:

MAX. CURRENT/VOLTAGE RATING WITH RESISTIVE LOAD :

400mA 32VAC - 200 mA 50VDC - 125 mA 125VAC.

INITIAL CONTACT RESISTANCE : 50mΩmax.

INSULATION RESISTANCE : 1GΩmin.at 500VDC.

DIELECTRIC STRENGTH : 1,500 VAC rms.

ELECTRICAL LIFE AT FULL LOAD : 500,000 cycles.

OPERATING TEMPERATURE : -30°C to 85°C.

PANEL THICKNESS : 1.5 mm (.059) min. -4 mm (.157) max.

TOTAL TRAVEL : 1.5 mm(.059)

OPERATING FORCE : 3N~6N

CONTACT BOUNCE : 10 ms.

MECHANICAL LIFE : 1,000,000 cycles.

TORQUE : 0.5 Nm max.applied to nut

DEGREE OF PROTECTION: IP68

MANUAL SOLDERING:

Use soldering iron of 30 watts, controlled at 350°C approximately 5 seconds while applying solder.

WAVE SOLDERING:

Recommended Soldering Temperature: 260 ± 5°C

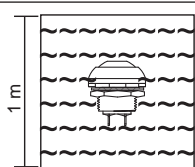
※ Ambient temperature of the soldered Surface of PC board.110°C Max.

Duration of Solder Immersion: Max 5 sec.(PCB is 1.6mm in thickness)



IP 68 for the whole series:

Protected against the effects of immersion up to 1 m water(60min)



MATERIALS

CAP: Polyamide 6/6.

PLUNGER: PFS6:PC / PFS7:Polyamide 6/6.

RUBBER: Silicone.

BUSHING: Polyamide 6/6.

CASE: Diallyl phthalate (DAP)(UL94v-0).

TERMINAL/CONTACTS:Gold over silver plated.

HOW TO ORDER

PF

Model NO.

PFS6 SP Off-Mom.

PFS7 SP On-Mom.(Without LED)

Bushing

B2 Threaded bushing

Cap Color

0 **M** Flat,Matte

A **S** Round,Bright(Non-LED)

G **S** High,Bright(Non-LED)

* Only flat cap available with LED.

CAP COLOR	ITEM NO.		
White	01M	A1S	G1S
Black (Std)	02M	A2S	G2S
Red (Std)	03M	A3S	G3S
Yellow	05M	A5S	G5S
Green	06M	A6S	G6S
Blue	07M	A7S	G7S

* Besides standard color, other colors need to check stocks available.

LED Color

ITEM NO	COLOR
L00	Without LED
L01	White
L03	Red
L05	Yellow
L06	Green
L07	Blue

Additional hardware

05 Additional hardware

RoHS soldering

S Rohs & Lead Free

Seal

A Sealed (STD)

Contact material

C Gold over silver

Terminations

M1 3.50 high,Solder lug(PFS6 only,Non-LED)

3.40 high,Solder lug(with LED and PFS7 Non-LED)

M2 5.50 high,Solder lug(PFS6 only,Non-LED)

M3 8.20 high,Solder lug(PFS6 only,Non-LED)

M4 3.50 high,PC thru-hole(PFS6 only,Non-LED)

EXAMPLE:

PFS6B2A2SM1CAS05L00(Without LED)

PFS6B20 MM1CAS05L

└─ CAP color ─┘ └─ LED Color ─┘

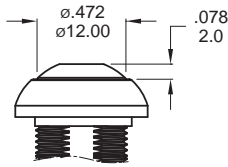
SWITCH FUNCTION

NO. POLES	MODEL NO.	SWITCH FUNCTION		CONNECTED TERMINALS / SCHEMATIC	
		POS.1	POS.2	POS.1	POS.2
SP	PFS6	OFF	MOM(ON)	OPEN	CLOSE
SP	PFS7	ON	MOM(OFF)	CLOSE	OPEN

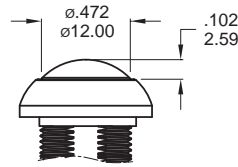
MOM=MOMENTARY

CAP OPTIONS

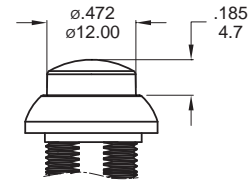
FLAT



ROUND Non-LED

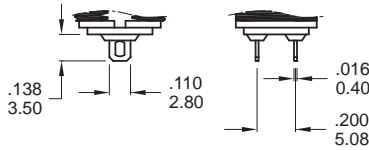


HIGH Non-LED

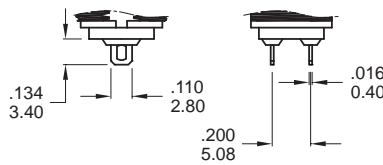


TERMINATION OPTIONS

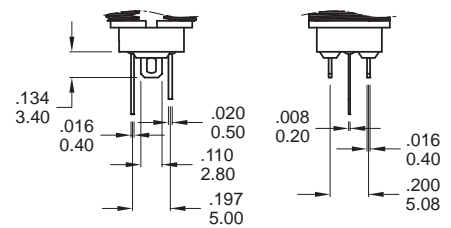
M1 Solder lug



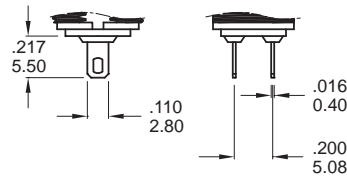
M1 Solder lug (PAS7)



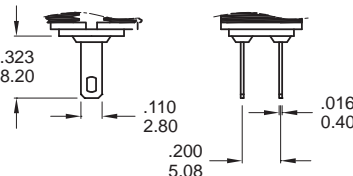
M1 Solder lug (PAS6, With LED)



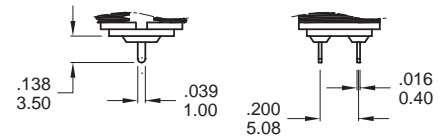
M2 Solder lug



M3 Solder lug

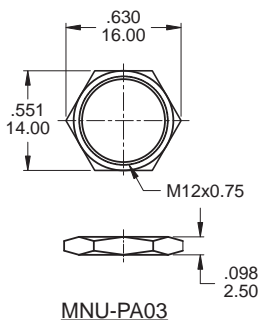


M4 PC Thru-hole

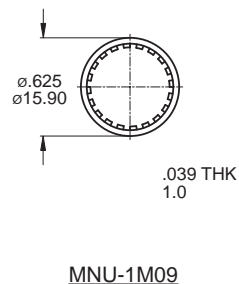


HARDWARE

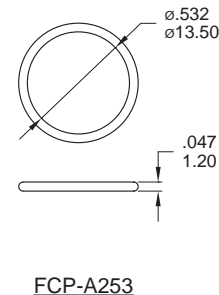
M12 NUT



LOCK WASHER

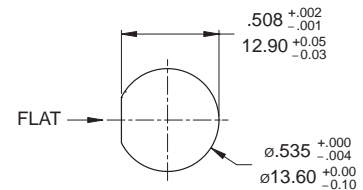


O-RING



PANEL CUT-OUT

THICKNESS: 1.5 mm ~ 4.0 mm

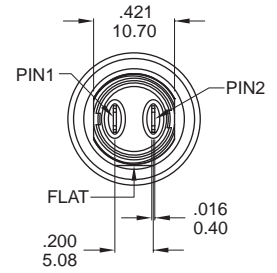
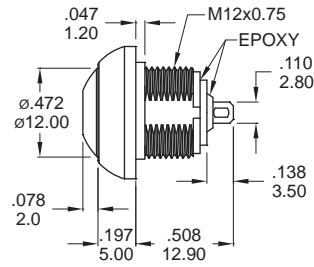
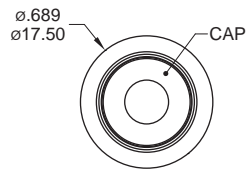


Sub-Miniature Pushbutton Switches

SPST



Part No. Shown :
PFS6B207MM1CAS05L00

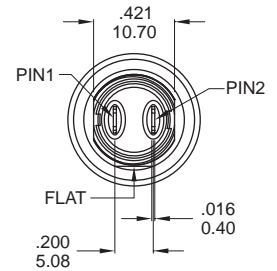
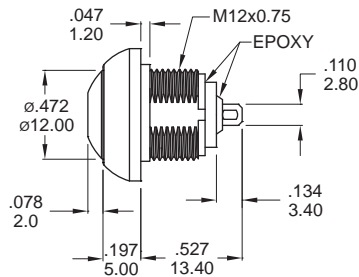
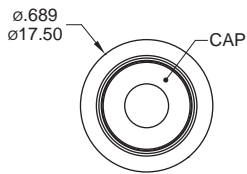


Bottom View

SPST



Part No. Shown :
PFS7B202M1CAS05L00

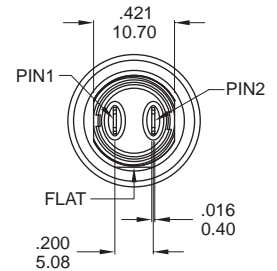
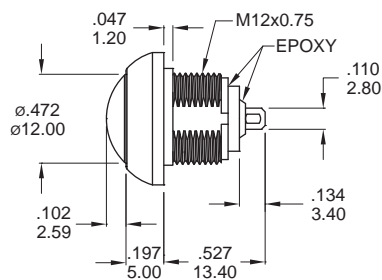
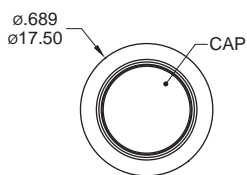


Bottom View

SPST



Part No. Shown :
PFS6B2A3S1CAS05L00

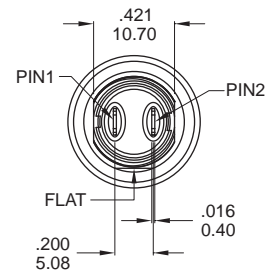
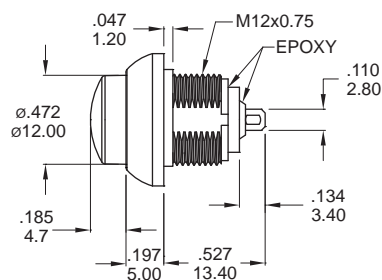
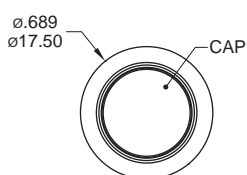


Bottom View

SPST



Part No. Shown :
PFS6B2G2S1CAS05L00

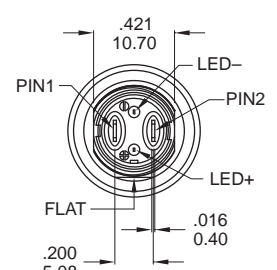
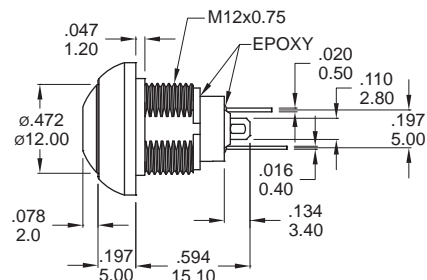
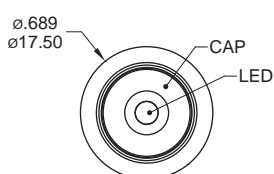


Bottom View

SPST



Part No. Shown :
PFS6B205M1CAS05L01



Bottom View