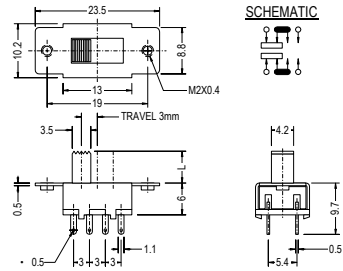
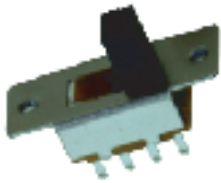


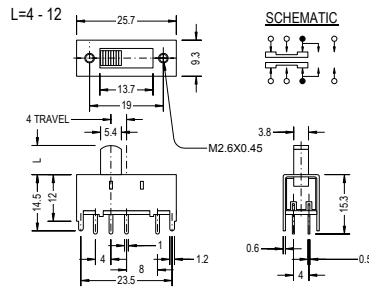
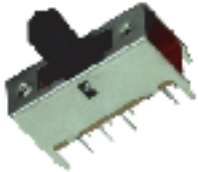
SS23F35



SPECIFICATION

- Circuit : ON-ON-ON (2P3T)
- Rating : D.C. 50V 0.3A
- Contact R.[max] : D.C. 5V 1A 30m
- Insulation R.[min]: D.C. 500V 100M
- Withstand VOL. : A.C. 500V 1minute
- Operating force : 300 100g
- Timing : Non Shorting
- Life cycle[max] : 10,000 CYCLES

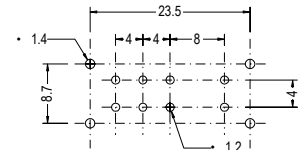
SS23H02



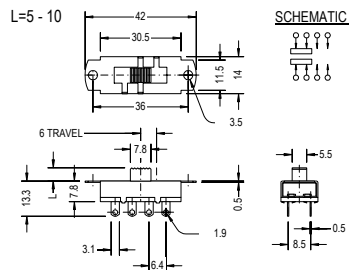
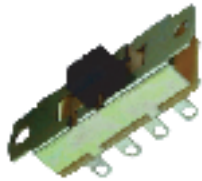
SPECIFICATION

- Circuit : ON-ON-ON(2P3T)
- Rating : D.C. 50V 0.3A
- Timing : Shorting

P.C.B. HOLE DETAIL



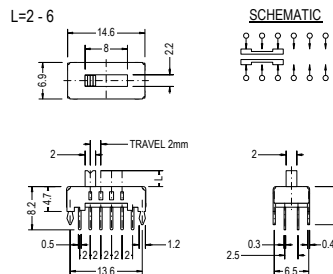
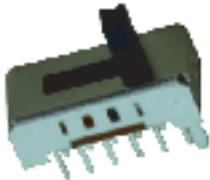
SS23L03



SPECIFICATION

- Circuit : ON-ON-ON (2P3T)
- Rating : A.C. 250V 3A
- Contact R.[max] : D.C. 5V 1A 30m
- Insulation R.[min]: D.C. 500V 100M
- Withstand VOL. : A.C. 500V 1minute
- Operating force : 300 100g
- Timing : Non Shorting
- Life cycle[max] : 10,000 CYCLES

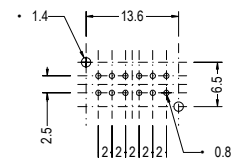
SS24D02



SPECIFICATION

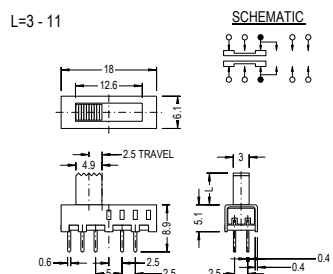
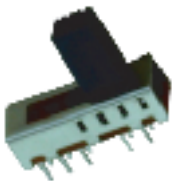
- Circuit : ON-ON-ON-ON(2P4T)
- Rating : D.C. 50V 0.3A
- Timing : Shorting

P.C.B. HOLE DETAIL



(SS-206)

SS24E01



SPECIFICATION

- Circuit : ON-ON-ON-ON(2P4T)
- Rating : D.C. 50V 0.3A
- Timing : Shorting

P.C.B. HOLE DETAIL

