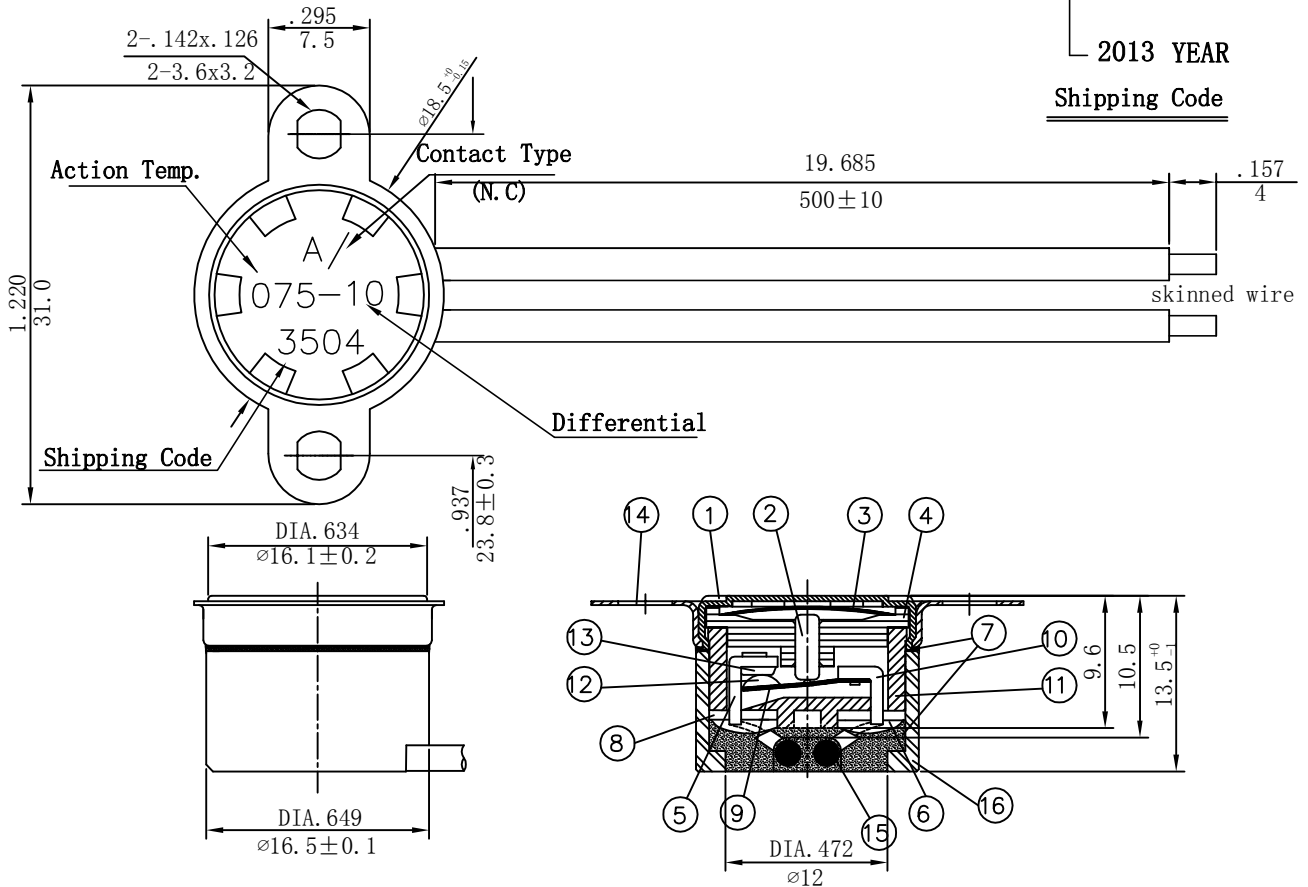


PARTS NAME	MATERIAL	UL FLAME GRADE
1 Sensing cap	AL	
2 Actuating pin	Ceramic	
3 Bimetal disc	Bimetal	
4 Retainer	Ceramic	94V-0
5 Stationary arm	Brass	
6 Solder	Tin	
7 Glue	Epoxy	94V-0
8 Terminal	Brass tin plated	
9 Movable arm	Beryllium copper	
10 Terminal-J	Brass	
11 Case	Ceramic	94V-0
12 Contact-R	Silver alloy	
13 Contact-F	Silver alloy	
14 Bracket	Steel Nickel plated	
15 Wire	Brass	
16 Waterproof	PPS black	94V-0

SPECIFICATIONS

- * CONTACT TYPE : Normally Closed
- * ACTION TEMP : 075 ° C ± 3 ° C
- * RESET TEMP : 065 ° C ± 4 ° C
- * TERMINAL SIZE : Amp # DIP TAB
- * CIRCUIT RESISTANCE : 50mΩ MAX.
- * INSULATION RESISTANCE : 100MΩ min. at DC 500V
- * DIELECTRIC STRENGTH : AC 1250V For One Minute
Or AC 1800V For One Sec
- * ELECTRICAL RATING : 16A 250VAC (Resistive Load)
- * OPERATING LIFE AND APPROVALS :
CQC:10.000:16A 250VAC
- * Wire model: 1332 18AWG , temperature of 200°C
waterproof grade IP67

3 5 04
 04th
 May
 2013 YEAR
Shipping Code



INCH
MM

SCALE 2:1 (mm)

The size remains unchanged, but other technical modification will be made without notice.

Series	T23	Code	T23A075ANF4-10-CW		
Unit	mm	Customer			
	draft	check	sale	approve	
Description	Draft				

Honest Well Co., Ltd